



Puget Sound LYS Tour 20th Anniversary Crochet Squares Bundle



20 Years of Stitching Together

20TH ANNIVERSARY BLANKET SQUARES BUNDLE

The Puget Sound Local Yarn Shop (LYS) Tour is proud to celebrate its 20th Anniversary with the release of the *20th Anniversary Blanket Squares Bundle*, a commemorative digital collection featuring exclusive knit and crochet blanket square patterns designed in collaboration with this year's participating shops.

Since its founding in 2006, the Puget Sound LYS Tour has brought fiber enthusiasts together to explore independently owned yarn shops across the Puget Sound region. The annual self-guided tour encourages makers to discover new shops, build community, and support local small businesses. We hope the bonus cumulative shop blanket patterns add to the joy of participating and expresses the gratefulness of all the shops to our participating yarn tourists.

The Blanket Square patterns are an extra bonus for this special 20th Anniversary year, along with the traditional release of featured crochet and knitting patterns at each Shop during the event. The Blanket Square patterns will be published digitally before the Tour to help participants warm up their needles and hooks until the Tour dates, May 13 - 17, 2026.

How to Participate:

Blanket Square Knit and Crochet patterns are revealed with each shop spotlight on social media, starting Feb 27, 2026 and posted on the LYS Tour official website www.LYSTour.com as downloadable pattern files.

This eBook bundles together the 25 Crochet Blanket Squares from all the participating shops. The 25 Knit Blanket Squares are bundled in a separate eBook. Enjoy them both!

Whether participants choose to knit or crochet a single square as a souvenir of their favorite shops or complete both anniversary blankets, the bundle offers a meaningful way to celebrate the Tour's 20th milestone year.

The 2026 Blanket Square Patterns include:

- * Exclusive knit and crochet blanket square patterns from each participating shop (*that's 25 knit squares and 25 crochet squares!*)
- * 10" x 10" knit or crochet square pattern using DK, light worsted, or equivalent yarn
- * A collaborative blanket designed to reflect 20 years of stitching together for the LYS Tour
- * Digital downloads for convenient access and participation
- * The flexibility to knit, or crochet, mix-and-match, or make both!

We can't wait to see what everyone does with their squares!

Share your progress on social media to connect with fellow participants:

#PugetSoundLYSTour #LYSTourBlanketSquares #LYSTour20years #LYSTour2026

Table of Contents

Materials.....	4
Gauge.....	4
Borders of Squares	4
Blocking.....	4
Finishing.....	4
Horizontal Seaming.....	5
Vertical Seaming.....	5
Edging Border Round	5
Abbreviations	6
Shop Patterns	7
Acorn Street Shop	7
All Wound Up Yarn Shop	9
Apple Yarns.....	12
B Town Yarn.....	14
Bazaar Girls Yarn Shop.....	15
Fidalgo Artisan Yarn & Clothing.....	16
Great Yarns	17
Hazel Knits.....	20
Heart2Heart Knitting & Fiber Arts	22
Makers' Mercantile.....	24
Needles & Hooks	26
Northwest Yarns & Mercantile	28
Quintessential Knits.....	30
Sea Bre's Yarn	32
Seattle Yarn.....	33
Stilly River Yarns	35
Stranded by the Sea	37
Strikke Yarn & Supply.....	39
The Knitters Studio.....	41
The New Knittery.....	43
The Nifty Knitter	45
The Tea Cozy.....	47
The Yarn Outfitter	48
WildFibers.....	50
Yarn Dragon.....	53

Materials

Yarn: Any DK, light worsted weight, or equivalent yarn (i.e. fingering weight held double) that makes gauge.

Hook: Most blocks were worked using a US H (5 mm) crochet hook.

Some blocks may be worked flat or in round, and a few use the Tunisian Method – each shop's pattern will specify these different styles and methods.

Supplies: tapestry needle, stitch markers, locking markers or pins for seaming.

Stitch markers may be helpful placed at the beginning or end of the row / rounds or to mark the Right Side (RS) or Wrong Side (WS) of the work.

Gauge

Each shop's pattern will state a recommended gauge, number of stitches, or patterns and rows per inch, which helps to ensure the dimensions of the pattern are achieved.

A larger hook will yield fewer stitches per inch and a smaller hook will yield more stitches per inch.

The end goal is for the square to be 10" x 10" after blocking. It's better if your square turns out a little smaller rather than a little bigger, as it is easier to block/stretch bigger to match the other squares when joining.

Borders of Squares

Many crochet squares include directions for finishing with a sc border. The border frames the center design of each square and provides a nice edge for easily seaming the squares together.

Some squares will have different stitch counts, but should be blocked to the same 10" square size. Feel free to add border rounds to smaller squares, as needed, to equalize sizing.

Blocking

Blocking will give each square a smooth, professional finish, even edges, and equal dimensions.

Block your finished squares to 10" x 10" using steam or water. If your square is a little smaller, stretch it to match the size of the other squares. Pin each square to size and shape and allow to dry fully before removing the pins.

Finishing

Crocheted squares may be seamed and combined into an afghan, lap blanket, pillow, tote bag, or whatever you envision. The arrangement possibilities are endless.

If you have made all 25 Shop's squares, you will have 5 squares wide X 5 squares high.

Place the squares on a large surface and arrange them in a pleasing layout and seam together.

There are many possible methods of seaming.

See instructions below on the Flat Slip Stitch Seam method.

The Flat Slip Stitch Seam method is a simple way to join the squares together. Using a slip stitch, squares are seamed first in horizontal rows, then rows of squares are added one after another to form a grid. Finally, vertical seams are worked to join the unworked edges of adjacent squares. This method is easy to work and has the additional benefit of laying completely flat.

Horizontal Seaming

Step 1: With the right sides facing up, lay squares to be joined one above another, aligning corners and center points, then use pins to distribute any extra stitches of larger squares evenly across smaller square.

Step 2: Beginning in the corner of the Top Square, insert hook in BLO of the 2nd ch of corner (if square does not have corner chains, insert hook into corner space), continuing with corner of the Bottom Square, insert hook in BLO of the 2nd ch of corner (or corner space), yo and pull through 2 loops on hook.

Step 3: Working across both Top and Bottom Squares, insert hook in BLO of next stitch on Top Square, then insert hook in BLO of corresponding stitch on Bottom Square, yo and pull through 3 loops on hook - for squares of different stitch counts, occasionally skip a stitch on larger square to ease in difference with smaller square.

Repeat Step 3 to the next corner, working only 1st chain stitch of each corner only (the remaining stitches of the corner that are part of the "other sides" of the square will be worked later).

Step 4: With right sides facing up, place next two squares to be joined one above the other lining up corners with each other and with the already seamed Top and Bottom Squares, pinning as needed.

Step 5: Beginning in the corner of the next Top Square, insert hook in BLO of the 2nd ch of corner (if square does not have corner chains, insert hook into corner space), continuing with corner of the next Bottom Square, insert hook in BLO of the 2nd ch of corner (or corner space), yo and pull through 3 loops on hook.

Repeat Step 3 - 5 to join additional squares. When you have no more squares to join for the length, slip stitch into corner of each final square to secure seam. Cut yarn and fasten off.

Repeat steps above for next row of squares by lining up new squares above existing rows, matching corners. Continue in this manner until all squares have been joined with a horizontal seam and form a grid of squares.

Vertical Seaming

Note: It may be helpful to turn the project to provide a more comfortable work angle and work squares that are side-by-side as "top" and "bottom" squares again.

Step 1: With right sides facing up, continue using the Flat Slip Stitch Seam method to join vertical sides of squares together to secure.

Repeat Steps 2 & 3 of Horizontal Seaming above to join unworked edges of adjacent squares until the seam intersection. At the intersection, slip stitch remaining corners together, ch 1, skip over existing seam to the next two squares, slip stitch unworked corner stitches together.

Continue in this manner to join remaining sides, slip stitch corners of each final square in row to secure seam. Cut yarn and fasten off.

Edging Border Round

Sc in each st around outside edge of piece, working extra stitches in corners / space to round corners.

Weave in ends. Borders and seams may be used to hide ends for easier finishing.

Abbreviations

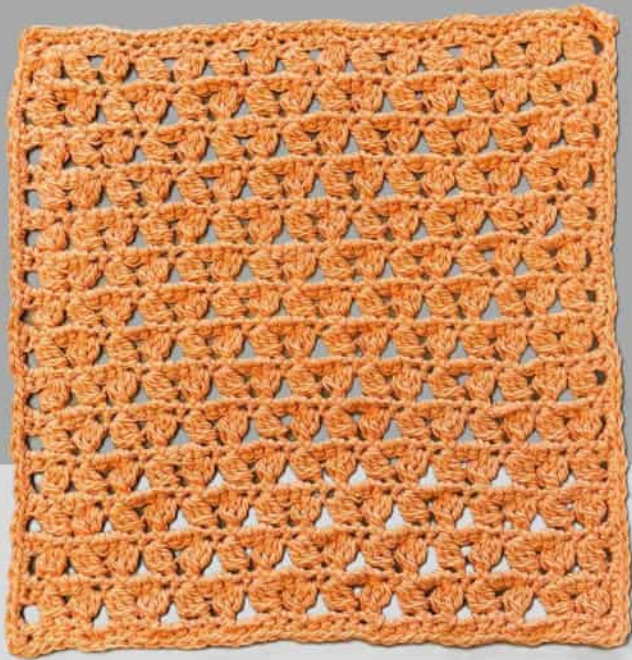
3dc-cl	3 double crochet cluster stitch	rep	repeat the [] instructions
B	Bobble	Rnd	Round
BLO	back loop only	RS	Right Side
BO	bobble	sc	single crochet
BPCN	beginning popcorn	sc/hdc	single crochet and half-double crochet in same stitch
BPdc	Back Post Double Crochet	sc/hdc/dc	single crochet, half-double crochet, and double crochet in same stitch
CC	Contrast Color	sc2tog	single crochet 2 together
ch	chain	sc3inc	3 single crochets in one stitch
ch#-sp	chain (indicated number) space	sdc	stacked double crochet
ch1-sp	chain 1 space	sk	skip
ch2-gap	chain 2, skip next 2 sts	sl	slip stitch
ch2-sp	chain 2 space	sl-st	slip stitch
ch3-sp	chain 3 space	sp (sps)	space (spaces)
ch-sp	chain space	st (sts)	stitch (stitches)
dc	double crochet	t-ch	turning chain
dc#-cl	dc (indicated number) cluster	TPS	Tunisian Purl Stitch
dc3tog	double crochet 3 together	tr	treble crochet
dc-cl	double crochet cluster (three dc in the same space)	TSS	Tunisian Simple Stitch
EDC	extended double crochet	WS	wrong side
ehdc	extended half double crochet	yo	yarn over
FPdc	Front Post Double Crochet	ysk	yarn skein stitch
fptr	front post treble crochet		
hdc	half double crochet		
HP-EDC	half puff extended double crochet		
LS	loop stitch		
MC	Main Color		
MP	Modified Puff		
MR	magic ring		
NJ	Needle Join		
P	Puff		
PCN	popcorn		
pm	place marker		
psc	picot single crochet		

For a full list, please refer to
[Crochet Abbreviations Master
 List by the Craft Yarn Council](#)

tinyurl.com/cycabbreviations

or scan the QR code





Crochet Blanket Square



Acorn Street Shop

Designed by
Mary Rourke

Blanket Square Size: 10" x 10"
(25.4 x 25.4 cm)

Yarn: any DK, light worsted weight, or equivalent yarn (i.e. fingering weight held double) that makes gauge.

Recommended Hook: US H (5 mm) or size needed to achieve gauge.

Gauge: 16 sc & 16 Rows over 4" (10cm) in pattern.

Supplies: tapestry needle, stitch markers

Special Abbreviations

This is a list of the special abbreviations. Please refer to [Crochet Abbreviations Master List by the Craft Yarn Council](#)

3dc-cl – 3 double crochet cluster stitch

ch – chain

ch1-sp – chain 1 space

ch3-sp – chain 3 space

dc – double crochet

rep – repeat

RS – Right Side

sc – single crochet

sk – skip

st (sts) – stitch (stitches)

t-ch – turning chain

Sample was made with Berroco Pima Soft (100% Pima Cotton) in color # 4632 – Cantaloupe.

Special Stitches

3dc-cl (3 double crochet cluster stitch) – [yarn over, insert hook into stitch, yarn over, pull through stitch, yarn over and pull through 2 loops] x 3 times (4 loops should remain on the hook now), yarn over and pull through all remaining loops on hook.

Pattern Instructions

Ch 42, turn.

Row 1 (RS): 1 sc in 2nd chain from hook, work in sc across, turn.

Row 2: Ch 3 (counts as 1 dc), sk next sc, *3dc-cl in next sc, ch 3, 3dc-cl in next sc, sk 3 sc, rep from * to last 2 sc, sk next sc, 1 dc in last sc, turn.

Row 3: Ch 1, 1 sc in 1st dc, *1 sc on top of 3dc-cl, 3 sc in next ch3-sp, 1 sc on top of 3dc-cl, rep from * to t-ch, 1 sc in t-ch, turn.

Row 4: Ch 4 (counts as 1 dc and ch 1), 3dc-cl in next sc, *sk next 3 sc, 3dc-cl in next sc, ch3, 3dc-cl in next sc, rep from * to last 5 sc, sk next 3 sc, 3dc-cl in next sc, ch1, 1 dc in last sc, turn.

Row 5: Ch 1, 1 sc in 1st dc, 1 sc in next ch1-sp, 1 sc on top of 3dc-cl, *1 sc on top of 3dc-cl, 3 sc in next ch3-sp, 1 sc on top of 3dc-cl, rep from * to last 3dc-cl, 1 sc on top of last 3dc-cl, 2 sc in t-ch, turn.

Repeat Rows 2 – 5 seven more times, turn.

(continued on next page...)

Add sc edge around entire square by working 40 sc across each edge and 3 sc in each corner space to round corner.

Cut yarn and fasten off.

Weave in ends and block to 10" x 10" square. Enjoy!



Crochet Blanket Square



All Wound Up

**Designed by
Erica Kallberg,
Robotbee Designs**

Blanket Square Size: 10" x10"
(25.4 x 25.4 cm)

Yarn: any DK, light worsted weight, or equivalent yarn (i.e. fingering weight held double) that makes gauge.

Recommended Hook: Size F (3.75mm) or size needed to achieve gauge.

Gauge: 8 sts and 8 row over 4" (10cm) in pattern stitch.

Supplies: tapestry needle, stitch markers

Special Abbreviations

This is a list of the special abbreviations. Please refer to [Crochet Abbreviations Master List by the Craft Yarn Council](#)

ch – chain
dc – double crochet
EDC - extended double crochet
HP-EDC - half puff extended double crochet
sc – single crochet
st (sts) – stitch (stitches)
yo – yarn over

Sample was made with Polka Dot Sheep Stumptown DK in
Approx. 26-27g (61 yds) of Color 1: Dusty Road
Approx. 23-24g (54 yds) Color 2: Aubergine

Special Instructions

Extended Double Crochet (EDC) - yo, insert hook into indicated stitch 2 rows below, yo and draw up a loop extending the leg of the stitch so it doesn't cinch the rows together, yo, pull through 2 loops, yo, pull through the last 2 loops.

Half Puff Extended Double Crochet (HP-EDC) - (yo, insert hook into indicated stitch 2 rows below, yo and draw up a loop extending the leg of the stitch so it doesn't cinch the rows together) repeat two times, yo, pull through 4 loops, yo, pull through the last 2 loops.

Notes

Pattern is worked top down, Row 1 is the "top" of the square.

Ch1 and Ch2 at the beginning of a row does not count towards the stitch count for that row.

Ch2 is used at the beginning of dc rows, as it leaves less of a space at the edge to avoid gaps when making the SC border.

When making EDC and HP-EDC stitches over a ch, the stitch surrounds the ch (front and back) and is otherwise unworked.

Carry your inactive color through your end stitches/beginning chains for a neater appearance, this edge will be mostly hidden by the edging round.

Chart on Page 3.

(continued on next page...)

Pattern for Gauge Swatch:

Note May swatch with just one color or with two colors to practice running your un-used color through the last stitch/beginning ch by alternating colors every 2 rows starting in row 4.

Ch 17.

Row 1: Starting in 2nd ch from the hook, sc in each stitch across, turn.

Row 2: Ch 2, dc in each sc across, turn.

Row 3: Ch 1, sc in each dc across, turn.

Rows 4 – 15: Repeat Rows 2 and 3.

Block and check gauge.

Pattern Instructions

Using Color 1, Ch 40.

Row 1: Starting in the 2nd ch from the hook, sc 39, turn. (39 sc = 39 sts)

Row 2: Ch 2, *dc 3, ch 1, skip the next sc, repeat from * until 3 sts remain, dc in the last 3 sts, turn. (30 dc and 9 ch = 39 sts)

Row 3: Ch 1, sc in each stitch across, **change to Color 2**, turn. (39 sc = 39 sts)

Row 4: Ch 2, *dc, CH 1, skip the next sc, dc, EDC in the unworked sc 2 rows below, repeat from * until 3 sts remain, dc, ch 1, skip the next sc, dc in the last stitch, turn. (20 dc, 9 EDC and 10 ch = 39 stitches)

Row 5: Ch 1, sc in each stitch across, **change to Color 1**, turn. (39 sc = 39 sts)

Row 6: Ch 2, *dc, HP-EDC in the unworked sc 2 rows below, dc, ch, skip the next sc repeat from * until 3 sts remain, dc, HP-EDC, dc, turn. (20 dc, 10 HP-EDC and 9 ch = 39 sts)

Rows 7 – 30: Repeat Rows 3 – 6.

Rows 31 – 33: Repeat Rows 3 – 5.

Row 34: **In Color 1**, ch 2, *dc, HP-EDC unworked sc 2 rows below, dc 2, repeat from * until 3 sts remain, dc, HP-EDC, dc, turn. (29 dc and 10 HP-EDC = 39 sts)

Row 35: Repeat row 3.

Edging Round: **In Color 2**, ch1, *sc in each stitch across until 1 stitch remains, sc 3 in the last stitch, (turn to continue working along the side of your square), sc 38 evenly spaced along the edge to the next corner**, (turn to continue working along the foundation chain of your square), sc 3 in the first stitch of the foundation chain, repeat from * to **, sc 2 in the same stitch as the first sc of the round, join with slip stitch to the first sc.

Cut yarn and fasten off.

Weave in ends and block to 10" x 10" square. Enjoy!



- Color 1 indicated by black, Color 2 indicated by red. Foundation Chain, beginning Chains and SC Edging are omitted from the chart.
- X Single crochet
- X Single crochet
- F Double crochet
- F Double crochet
- O Chain
- O Chain
- D Extended double crochet worked in the unworked SC 2 rows below
- P Half Puff Extended Double Crochet (HP-EDC) - (YO, insert hook into indicated stitch 2 rows below, draw up a loop making sure to extend the leg of the stitch so it doesn't cinch the rows together) x2, YO, pull through 4 loops, YO, pull through the last 2 l



Crochet Blanket Square



Apple Yarns

**Designed by
Andrea Evans**

Blanket Square Size: 10" x 10"
(25.4 x 25.4 cm)

Yarn: any DK, light worsted weight, or equivalent yarn (i.e. fingering weight held double) that makes gauge.

Recommended Hook: US H (5 mm) or size needed to achieve gauge.

Gauge: 18 dc and 15 rows over 4" (10cm) after blocking.

Supplies: tapestry needle, stitch markers

Special Abbreviations

This is a list of the special abbreviations. Please refer to [Crochet Abbreviations Master List by the Craft Yarn Council](#)

BPdc – Back Post Double Crochet

ch – chain

dc – double crochet

FPdc – Front Post Double Crochet

hdc – half double crochet

RS – Right Side

st (sts) – stitch (stitches)

WS – Wrong Side

yo – yarn over

Sample was made with Vintage DK.

Special Stitches

Back Post Double Crochet (BPdc) – Yo, insert your hook from the back of your fabric forward and over the post then back through the fabric (the shaft of the hook will push the post of the indicated dc towards the back of the fabric), draw up a loop, yo and pull through 2 loops, yo and pull through last 2 loops.

Front Post Double Crochet (FPdc) – Yo, insert your hook from front to back and behind the post and then forward to the front of the fabric (the shaft of the hook will pull the post of the indicated dc towards the front of the fabric), draw up a loop, yo and pull through 2 loops, yo and pull through last 2 loops.

Notes

Instructions within parentheses () denote stitch counts.

Instructions within brackets [] should be repeated as many times as indicated.

Turning chains (ch 2) do NOT count as sts.

Use markers to keep track of the RS and WS of work. It can be challenging to accurately count rows when working with BP and FP sts.

The resulting fabric is very stretchy. Your square will not measure 10x10 until after blocking.

(continued on next page...)

Pattern Instructions

Ch 49.

Setup Row (WS): Dc into 4th ch from hook and every ch across. (46 dc, *ch-3 at start does not count as stitch*)

Row 1 (RS): Ch 2, skip first st, [FPdc around next 3 sts, BPdc around next 3 sts] seven times, FPdc around next 3 sts, hdc in top of turning ch. Turn. (24 FPdc, 21 BPdc, 1 hdc, *ch-2 does not count as st*)

Row 2 (WS): Ch 2, skip first st, [BPdc around next 3 sts, FPdc around next 3 sts] seven times, BPdc around next 3 sts, hdc in top of turning ch. Turn. (24 BPdc, 21 FPdc, 1 hdc, *ch-2 does not count as st*)

Row 3 (RS): Repeat Row 2.

Row 4 (WS): Repeat Row 1.

Repeat Rows 1 – 4 five more times or until piece is square, ending after completing a WS row.

Cut yarn and fasten off.

Weave in ends and block to 10" x 10" square. Enjoy!



Crochet Blanket Square



B Town Yarn - Designed by Arlinda Garcia

Blanket Square Size: 10" x 10"
(25.4 x 25.4 cm)

Yarn: any DK, light worsted weight, or equivalent yarn (i.e. fingering weight held double) that makes gauge.

Recommended Hook: US H (5 mm) or size needed to achieve gauge.

Gauge: 20 sts in pattern over 4" (10cm).

Supplies: tapestry needle, stitch markers

Special Abbreviations

This is a list of the special abbreviations. Please refer to [Crochet Abbreviations Master List by the Craft Yarn Council](#)

ch – chain
ch1-sp – chain 1 space
LS – loop stitch
RS – Right Side
sc – single crochet
sk – skip
st (sts) – stitch (stitches)
t-ch – turning chain
yo – yarn over

Sample was made with Andes Amano.

Special Stiches

Loop Stitch (LS): Draw up a loop in designated stitch, yo, draw up loop in next stitch, yo, draw through 4 loops on hook.

Pattern Instructions

Ch 43 stitches.

Row 1: Draw up loop in 3rd chain from hook (2 sk ch do not count as st), yo, draw up loop in next ch, yo, draw through 4 loops on hook (first LS made), *ch 1, LS over next 2 ch, rep from * across to last st, ch1, sc in last ch, turn.

Row 2: Ch 2 (does not count as st throughout), LS over first sc and next ch1-sp, *ch 1, LS over next LS and next ch1-sp, rep from * across to last LS, ch 1, sk last LS, sc in top ch of 2 sk ch, turn.

Row 3: Ch 2, LS over first sc and next ch1-sp, *ch 1, LS over next LS and next ch1-sp, rep from * across to last LS, ch 1, sk last LS, sc in t-ch, turn.

Rows 4 - 40: Repeat Row 3.

To finish, sc evenly around entire square by working sc evenly across all four sides and 3 sc in each corner space to round corner.

Cut yarn and fasten off.

Weave in ends and block to 10" x 10" square. Enjoy!



Crochet Blanket Square



Bazaar Girls Yarn Shop

**Designed by
Kerri Hartman**

Blanket Square Size: 10" x 10"
(25.4 x 25.4 cm)

Yarn: any DK, light worsted weight, or equivalent yarn (i.e. fingering weight held double) that makes gauge.

Recommended Hook: US H (5 mm) or size needed to achieve gauge.

Gauge: 16 scs and 16 rows over 4" (10cm) in block pattern.

Supplies: tapestry needle, stitch markers

Special Abbreviations

This is a list of the special abbreviations. Please refer to [Crochet Abbreviations Master List by the Craft Yarn Council](#)

bpdc – back post double crochet

ch – chain

dc – double crochet

fpdc – front post double crochet

hdc – half-double crochet

sc – single crochet

slst – slip stitch

sk – skip

st (sts) – stitch (stitches)

Sample was made with Cascade Yarns 220 Superwash Wave.

Pattern Instructions

Ch 34, turn.

Row 1: 1 dc in 2nd back bump from hook and each back bump across. *Working the back bump will make it easier to work the border at the end.* Turn. (32 dc)

Row 2 and 3: Ch1, hdc into the first st, (fpdc into the next 4 sts, bpdc into the next 4 sts) repeat three more times, hdc into the last stitch. Turn. (16 fpdc, 16 bpdc, 2 hdc)

Row 4 and 5: Ch1, hdc into the first st, (bpdc into the next 4 sts, fpdc into the next 4 sts) repeat three more times, hdc into the last stitch. Turn. (16 bpdc, 16 fpdc, 2 hdc)

Row 6 - 25: Repeat Rows 2 - 5.

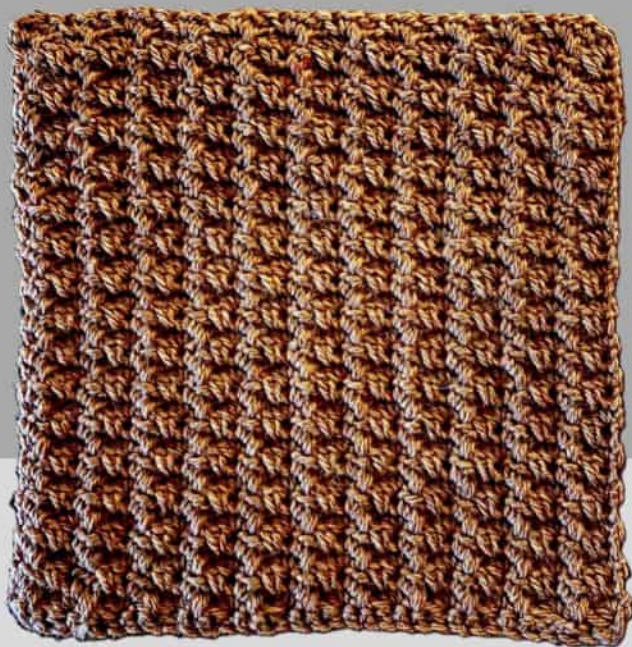
Note: In the next two rows, you will work all the way around the outside of the square.

Row 26: Work (1 sc into each dc across side and 2 sc into the corner space, continue around and work 34 sc evenly spaced into the end of each row and 2 sc into the corner space) repeat around remaining sides to finish square, slst into the first sc. (36 sc per side – 144 total)

Row 27: Work 1 sc into each stitch around square and 2 sc into each corner space. (38 sc per side – 152 total)

Cut yarn and fasten off.

Weave in ends and block to 10" x 10" square. Enjoy!



Crochet Blanket Square



**Fidalgo Artisan Yarn
& Clothing**

**Designed by
Maggie Stiles**

Blanket Square Size: 10" x 10"
(25.4 x 25.4 cm)

Yarn: any DK, light worsted weight, or equivalent yarn (i.e. fingering weight held double) that makes gauge.

Recommended Hook: US H (5 mm) or size needed to achieve gauge.

Gauge: 14 sts over 4" (10cm)
in pattern stitch.

Supplies: tapestry needle, stitch markers

Special Abbreviations

This is a list of the special abbreviations. Please refer to [Crochet Abbreviations Master List by the Craft Yarn Council](#)

ch – chain

dc – double crochet

hdc – half-double crochet

sc – single crochet

sc/hdc/dc – single crochet, half-double
crochet, and double crochet in same stitch

sc/hdc – single crochet and half-double
crochet in same stitch

st (sts) – stitch (stitches)

Sample was made with Fidalgo Artisan Yarn's Merino DK (100% Superwash Merino).

Notes

If you are a tight crocheter, you may need to increase your initial chain count to 38; if you are a loose crocheter, you may decrease your chain count to 32. You may also adjust your hook size.

Pattern Instructions

Ch 35 stitches (multiples of 3+2)

Row 1: Sc into the back bumps to end of chain. Ch1 and turn.

Row 2: Into first st, sc/hdc/dc, [skip 2, sc/hdc/dc] to last three sts, skip 2, sc into last st. Ch1 and turn.

Row 3: Into first st, sc/hdc, then into first skipped st in row below, work a dc, [skip 2, sc/hdc, then dc into skipped st in row below] to last three sts, skip 2, sc into last st. Ch1 and turn.

Repeat Row 3 until your square measures 10".

Cut yarn and fasten off.

Weave in ends and block to 10" x 10" square. Enjoy!



Crochet Blanket Square

Great Yarns!

Great Yarns! - Designed by Cherrill Mears

Blanket Square Size: 10" x 10"
(25.4 x 25.4 cm)

Yarn: any DK, light worsted weight, or equivalent yarn (i.e. fingering weight held double) that makes gauge.

Recommended Hook: US H (5 mm) or size needed to achieve gauge.

Gauge: Measurements are given for each section.

Supplies: tapestry needle, stitch markers

Special Abbreviations

This is a list of the special abbreviations. Please refer to [Crochet Abbreviations Master List by the Craft Yarn Council](#)

BPCN - beginning popcorn

ch - chain

dc - double crochet

hdc - half double crochet

PCN - popcorn

pm - place marker

rnd - round

sc - single crochet

sdc - stacked double crochet

sl st(s) - slip stitches

st (sts) - stitch (stitches)

tr - treble crochet

yo - yarn over

Sample was made with Cascade 220 Superwash Merino in the following colors:

Border Color (**BC**), No. 40 Tan

Contrast Color (**CC**), No. 28 Black

Main Color (**MC**), No. 25 Off White

Notes: All joins are done using invisible join technique unless otherwise indicated. See Video Resources at end for help.

Special Stitches

Beginning Popcorn (BPCN) – Ch 3 in designated location. Make 3 dc in same st. Elongate the loop on the hook after the last dc. Remove hook and insert it from front to back through the top loop of the beginning ch3. Catch the loose loop on your hook and pull it through the loop from the beginning ch 3. Ch 1 to close.

Popcorn (PCN) – In designated st, make 4 dc. Elongate the loop on the hook after the last dc. Remove hook and insert it from front to back through the top loop of the 1st dc. Catch the loose loop on your hook and pull it through the loop from the 1st dc. Ch 1 to close.

Pattern Instructions

Using CC black, make a magic ring.

Rnd 1: 8 sc in magic ring. Join.

Rnd 2: Ch 2. 2 hdc in each st. Join. (16 sts)

Rnd 3: Ch 1. Starting in st with the join, (sc in 1st st, 2 sc in next st) 8 times. Join. (24 sts)

(continued on next page...)

Rnd 4: Ch 2. Starting in st with the join, (1 hdc in 1st and 2nd st, 2 hdc in next st) 8 times. Join. (32 sts) PM in join st. PM in every 8th st so as to divide the circle into 4 sections of 8 sts each.

Rnd 5: **Make Right Ear.** Starting at the join, *ch 9. Sc in 2nd chain from hook, then sc, hdc, dc, tr, dc. Hdc in last 2 chains.* Sc in 1st st to left of join. Sc in next 6 sts. Sl st into the st with the marker. **Make Left Ear.** Repeat the sts between *. Sl st into the next st with a marker. Join. Secure the st and cut yarn. (2 ears, 1 sl st, and 29 sc, including those from the previous rnd.)

Rnd 6: Mark the back side of the right ear. Turn the work to the back (*right side when facing you, right side up*), and attach MC white to the marked ear in the st at the left of where the marked ear began in the previous rnd. Ch 3 and turn work back to the front. The ch 3 remains behind the ear. Sl st in the back loop of the 6 sc between the ears. Keep the sl sts in this rnd a bit loose. Ch 3 behind left ear. Sl st in back loop of the first sc after the left ear. Sl st through the back loop of the next 7 sc. Sl st in the next sc with a marker. Sl st remaining sts in the back loop until reaching the right ear. Join with sl st into next ch 3 space. (30 sl st and 6 chs).

The center circle (the sheep's head) should measure between 2.75" and 3" in diameter.

Sheep's Fleece.

Rnd 7: Work only in the white sl sts and chain sts of the previous rnd. BPCN in ch 3 space behind right ear. (ch 1, skip 1 st, PCN in next st) 3 times. Ch 1, PCN in ch 3 space behind left ear. Move the ear markers to the top of the PCN behind each ear. Ch 1, *skip 1 sl st, PCN in next st, ch 1* 4 times. Move marker to top of last PCN. Repeat between * * 2 times. Join to BPCN. (17 PCNs, including BPCN, and 17 ch 1 spaces).

Rnd 8: Make BPCN in top of 1st PCN from previous rnd. (Ch 1, PCN in next ch 1 space, ch 1, PCN in top of next PCN) 15 times. Ch 1 and join to BPCN. Move markers up. Place marker in every 8th PCN. (33 PCNs, including BPCN, 33 ch 1 spaces).

Rnd 9: Sl st into next ch 1 space after the join. Make BPCN in same ch 1 space. (Ch 1, PCN in next ch 1 space) 31 times, moving markers up. In this rnd the markers will be in ch 1 spaces. Ch 1 and join to BPCN. (33 PCNs, including BPCN, 33 ch 1 spaces).

Rnd 10: Sl st into next ch 1 space after the join. Make BPCN in same ch 1 space. (Ch 1, PCN in next ch 1 space) 31 times, moving markers up. In this rnd the markers will be in PCNs again. Ch 1 and join to BPCN. (33 PCNs, including BPCN, 33 ch 1 spaces). Cut yarn and fasten off.

After the fleece is completed, the diameter should measure between 7.25" and 7.5".

Set-up for legs

Check that the ears are evenly centered between 2 marked PCNs and that the 4 markers are evenly spaced with one marker every 8 PCNs. 7 PCNs are between the two marked PCNs on the bottom. PM in ch 1 spaces on either side of the middle PCN at the bottom. PM in the middle bottom PCN.

Measure 3.5 yards of CC black. Thread the yarn through the marked ch 1 spaces so that the yarn dangles at the front of the work and both strands are the same length. Remove markers from the ch 1 spaces. Pull up a loop from back to front in behind the middle bottom PCN. Thread both yarn ends through this loop, and pull loop almost closed. Bring loop over the top of the middle PCN and finish pulling it closed. Pull both stands of yarn through the ch 1 spaces to the back of the work. Turn the work so that the ears are at the bottom and the bottom marked PCN is at the top.

Make First Leg

Insert hook into the middle of the PCN to the right of the middle marked PCN, and pull up a loop. Ch1 and sc in same space, 3 sc in next ch 1 space. If a strand of the CC is visible, catch it under the 3 sc. Turn. Do not make a turning chain here or in any of the turns for either leg. *Sc in each of the 4 sc. Turn. Skip the 1st sc, sc in the remaining 3 sc. Turn, sc in the 3 sc. Turn. Skip the 1st sc, sc in the remaining 2 sc. Turn, sc in the 2 sc. Turn. Skip the 1st sc, sc in the remaining sc. Pull the yarn through the loop to secure it. Do not cut the yarn.*

(continued on next page...)

Make Second Leg

Insert the hook into the ch 1 space to the left of the marked popcorn. Ch 1, 3 sc in ch1 space, sc in center of PCN to the left of the ch 1 space. Follow direction for First Leg between the * *. Remove marker from the middle PCN.

Make the Pasture Fence

The 4 marked popcorns, equally spaced out, are the 4 corner sts. Join BC tan in the ch 1 space to the right of the marked popcorn which is to the right of the legs.

Rnd 11: Sdc and dc in ch 1 space. Pm marker in sdc to mark beginning of the rnd. *5 tr in corner PCN, pm in center tr. Tr, dc in next ch 1 space, dc in next PCN, 2 dc in next space, hdc in next PCN, hdc in next space, sc next PCN, 2 sc in next space, sc in next PCN, 2 sc in next space, Sc in next PCN, hdc in next space, hdc in next PCN, 2 dc in next space, dc in next PCN. Dc, tr in last ch 1 space before next corner.* Repeat between * * 2 times. Last side: 5 tr in corner PCN, pm in center tr. Tr, dc in next ch 1 space, dc in next PCN, 2 dc in next space, hdc in next PCN, hdc in next space, sc next PCN, ch 2 behind leg, sc in next PCN, ch 2 behind second leg, sc in next PCN, hdc in next space, hdc in next PCN, 2 dc in next space, dc in next PCN. Join with standard sl st to sdc at beginning of rnd. (25 sts per side not counting the corner sts).

Rnds 12, 14, 16 : sl st in every st around. Join with standard sl st at rnd beginning.

Rnd 13: Sdc at join, dc in next 3 stitches. *5 tr in corner st, move marker up. Dc in next 8 sts, hdc in next 9 sts, dc in next 8 sts.* Repeat between * * 2 times. Last side: 5 tr in corner st, move marker up. Dc in next 8 sts, hdc in next 9 sts, dc in next 4 sts. Join with standard sl st. 29 sts per side not counting the corner sts.

Rnd 15: Sdc at join, dc in next 5 sts. *5 dc in corner st, move marker up. Dc in next 29 sts.* Repeat between * * 2 times. Last side: 5 dc in corner st, move marker up. Dc in next 24 sts. Join with standard sl st.

Rnd 17: Ch 1, sc in all sts with 3 sc in each corner. Join using invisible method. Remove markers. Cut yarn leaving tail to weave in.

Finishing

Tack down feet into border. Cut yarn leaving 6 to 8 inches to weave in. Position ears and tack down with matching sewing thread. Embroider eyes and nose.

Weave in ends and block to 10" x 10" square. Enjoy!

Video Resources

Invisible join in the round

<https://www.youtube.com/watch?v=4V1JgDB7eNw>

Stacked double crochet

<https://www.youtube.com/watch?v=d5JDo0CSxrg>



Crochet Blanket Square



Hazel Knits

**Designed by
Amy Herring**

Blanket Square Size: 10" x 10"
(25.4 x 25.4 cm)

Yarn: any DK, light worsted weight, or equivalent yarn (i.e. fingering weight held double) that makes gauge.

Recommended Hook: US H (5 mm) or size needed to achieve gauge.

Gauge: 4-1/2 diamonds over 4" (10cm) measured at widest point after blocking

Supplies: tapestry needle, stitch markers

Special Abbreviations

This is a list of the special abbreviations. Please refer to [Crochet Abbreviations Master List by the Craft Yarn Council](#)

ch – chain

ch1-sp – chain 1 space

ch3-sp – chain 3 space

dc – double crochet

dc3tog – double crochet 3 together

sc – single crochet

sc2tog – single crochet 2 together

sl-st – slip stitch

st (sts) – stitch (stitches)

sp – space

yo – yarn over

Sample was made with Cascade 220 Superwash.

Special Stitches

Double Crochet 3 Together (dc3tog) – [yo, insert hook in stitch and pull up a loop, yo and pull through two loops on hook] three times (4 loops on hook), yo and pull through all loops.

Notes

Turn at the end of every row until you work the border, where you will work in continuous rows around the outside of the right side of the work.

Square is worked with two colors (Color A and Color B). Carry unused color up the side of work.

Instructions within parentheses () denote stitch counts.

Instructions within brackets [] or between * * should be repeated as many times as indicated.

Chain 3 at edges of rows count as a dc.

(continued on next page...)

Pattern Instructions

With Color A:

Ch 32.

Row 1: Dc 3 in fourth ch from hook, [skip 2 ch, dc 3 in next ch] nine times, dc in last ch. (32 dc)

Row 2: Ch 4 (counts as dc + 1 ch), [dc3tog, ch 3] nine times, dc3tog, ch 1, dc in top of ch-3 from previous row.
(2 dc, 10 dc3tog, 29 ch)

Change to Color B.

Row 3: Ch 3, dc into ch1-sp, ch 1, [dc 3 in next ch3-sp, skip dc3tog] nine times, ch 1, dc in ch1-sp, dc in top of ch-3 from previous row. (31 dc, 2 ch)

Row 4: Ch 3, dc in next st, skip ch1-sp, [ch 3, dc3tog] nine times, ch 3, skip ch1-sp, dc in next dc, dc in top of ch-3 from previous row. (4 dc, 30 ch, 9 dc3tog)

Change to Color A.

Row 5: Ch 3, skip next dc, [dc 3 in next ch3-sp, skip dc3tog] nine times, skip dc, dc in top of ch-3 from previous row.

Work Rows 2 – 5 two more times (continuing to alternate colors).

Work Rows 2 – 4 once more (continuing to alternate colors).

Border

Sc all around the outside edge of your project. Do not turn work; instead, rotate it.

With Color A (don't cut Color B):

Border Round 1:

1. Top Edge: Ch 1, sc2tog, [sc 2 in ch3-sp, sc in dc3tog] nine times, sc 2 in last ch3-sp, sc in next dc, sc in top of ch-3 from previous row.
 2. Left Side: [Sc 2 around the dc at the end of row, enclosing the dc within the sc] repeat to end of side.
 3. Bottom Edge: Sc 2 in same space, [sc in dc3tog, sc 2 in ch2-sp] nine times, sc in dc3tog, sc 2 in top of ch-3.
 4. Right side: Sc 2 in same space, then repeat instructions for Left Side.
- 128 stitches (32 sc on each side).

Change to Color B.

Border Round 2:

Ch 1, sc in each stitch around, working (sc 3) in each corner, join with sl st to beginning ch-1. (136 sc)

Repeat Border Round 2 (continuing to alternate colors) until piece measures 10" square.

Cut yarn and fasten off.

Weave in ends and block to 10" x 10" square. Enjoy!



Crochet Blanket Square



Knitting & Fiber Arts

**Heart2Heart Knitting
& Fiber Arts**

**Designed by
Nona Davenport**

Blanket Square Size: 10" x 10"
(25.4 x 25.4 cm)

Yarn: any DK, light worsted weight, or equivalent yarn (i.e. fingering weight held double) that makes gauge.

Recommended Hook: US G (4 mm) or size needed to achieve gauge.

Gauge: 20 sc and 9 rows over 4" (10cm) after blocking.

Supplies: tapestry needle, stitch markers

Special Abbreviations

This is a list of the special abbreviations. Please refer to [Crochet Abbreviations Master List by the Craft Yarn Council](#)

ch – chain
ch-sp – chain space
ch#-sp – chain (indicated number) space
dc – double crochet
RS – right side
sc – single crochet
sk – skip
sl st – slip stitch
sp (sps) – space (spaces)
st (sts) – stitch (stitches)
WS – wrong side
yo – yarn over

Sample was made with Berroco Vintage DK.

Notes

Instructions within brackets [] should be repeated as many times as indicated.

Each row begins with a ch1 or ch2. These are turning chains and should not be counted as a stitch.

You should have 45 sts throughout. Optional: Place markers on the first and last st of each row to keep edges straight.

You may need to go down a hook size for this square (compared to other squares in this project) as the stitches tend to create a slightly wider fabric.

Pattern Instructions

Ch 46.

Set Up (WS): Sc in 2nd ch from hook, sc in each ch across.
(45 sc)

Row 1 (RS): Ch 2, [dc in next 5 sts, ch 10, sl st into top of dc last made] eight times, dc in next 5 sts. (See photo for help with hook placement for the sl sts.)

Row 2 (WS): Ch 1, sc in each st across, when you encounter a loop, push it toward RS of work, bring working yarn in front of loop, and work next st. (See photo).

Repeat Rows 1 – 2 until square measures 9" (about 20 rows).

(continued on next page...)

Create Faux Cables

In the first column of loops, pull second loop from the bottom through the bottom loop, then pull the third loop through the second loop, etc. Repeat in this manner until all loops have been “crocheted” into a faux cable up the block. Repeat with the other seven columns of loops.

Finishing

Next Row (RS): Ch 2, dc into each st, ignoring loops.

Next Row (WS): Ch1, [sc in next 4 sts, sc in next st and through loop to anchor it] eight times, sc in next 5 sts.

Next Row: Ch 2, dc into each st across.

Next Row: Ch 1, sc into each st across.

Optional: Sl st around entire block to make attaching blocks together easier.

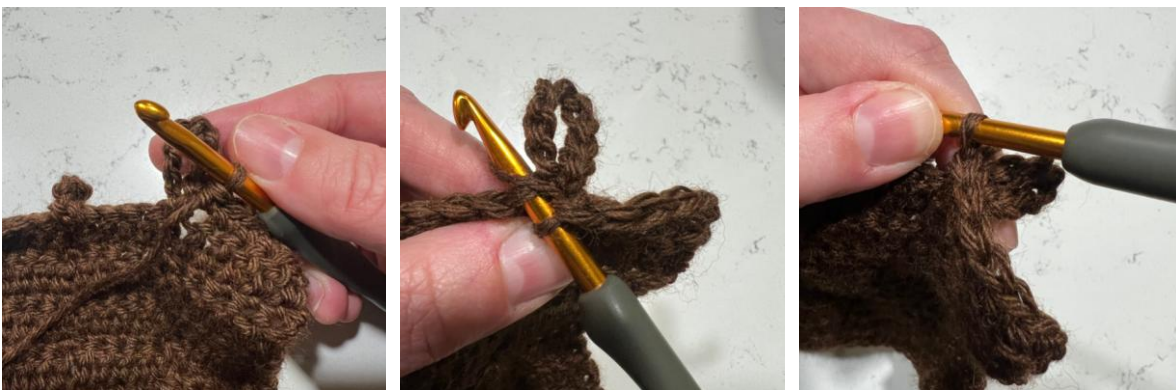
Cut yarn and fasten off.

Weave in ends and block to 10" x 10" square.

After ch 10, insert hook from the top down through the loops shown in the arrows, yo and pull through 3 loops to sl st. This connects the chain into a large loop, anchoring it between two dcs.



On WS rows, when you get to a loop, push it away from you (toward the RS). You can fold it down if that helps. Bring the working yarn in front of the loop (first and second images below), then sc. It should look like the third image when you've worked a sc before and after the loop.





Crochet Blanket Square



Makers' Mercantile

**Designed by
Ashlee Bramwell**

Blanket Square Size: 10" x 10"
(25.4 x 25.4 cm)

Yarn: any DK, light worsted weight, or equivalent yarn (i.e. fingering weight held double) that makes gauge.

Recommended Hook: US G (4.00 mm) or size needed to achieve gauge.

Gauge: 28 stitches and 13 rows = 5" x 5"
(13 cm x 13 cm) in pattern, worked flat.

Supplies: tapestry needle, stitch markers

Special Abbreviations

This is a list of the special abbreviations. Please refer to [Crochet Abbreviations Master List by the Craft Yarn Council](#)

ch – chain
ch1-sp – chain 3 space
ch3-sp – chain 3 space
dc – double crochet
hdc – half-double crochet
sc – single crochet
sl – slip stitch
sk – skip
st (sts) – stitch (stitches)
t-ch – turning chain
yo – yarn over

Sample was made with Simplicity by HiKoo®
(55% Merino, 28% Acrylic, 17% Nylon) in 008 Natural Olive.

Notes

A stitch chart is included and corresponds directly to the written instructions. Use either chart or written directions, as preferred.

Turning chains of ch 3 count as dc and chain 6 counts as dc + 3 ch.

Pattern Instructions

Ch 58.

Set-Up Row: Dc in 4th ch from hook (3 skipped ch count as dc), *ch 3, sk 3 ch, sc in next 5 ch, ch 3, sk 3 ch** dc in next 3 ch, repeat from * four times ending last repeat at **, dc in last 2 ch, turn.

Row 1: Ch 3 (counts as dc), *3 dc in next ch3-sp, ch 3, sk next sc, sc in next 3 sc, ch 3, 3 dc in next ch3-sp**, ch 1, repeat from * four times ending last repeat at **, dc in t-ch, turn.

Row 2: Ch 6, *3 dc in next ch3-sp, ch 3, dc in center sc, ch 3, 3 dc in next ch3-sp, ch 3**, dc in next ch1-sp, ch 3, repeat from * four times ending last repeat at **, dc in t-ch, turn.

Row 3: Ch 1, sc in first dc, *sc in next ch3-sp, ch 3, 3 dc in next ch3-sp, ch 1, 3 dc in next ch3-sp, ch 3**, sc in next ch3-sp, sc in next dc, repeat from * four times ending last repeat at **, sc in t-ch, sc in 3rd ch of t-ch, turn.

(continued on next page...)

- Row 4: Ch 1, sc in first sc, sc in next sc, *sc in next ch3-sp, ch 3, 3 dc in next ch1-sp, 1 sc, ch 3, sc in next ch3-sp**, sc in next 3 sc, repeat from * four times ending last repeat at **, sc in last 2 sc, turn.
- Row 5: Ch 1, sc in first sc, *sc in next sc, ch 3, 3 dc in next ch3-sp, ch 1, 3 dc in next ch3-sp, ch 3, sk next sc, sc in next 2 sc, repeat four times, turn.
- Row 6: Ch 6, *3 dc in next ch3-sp, ch 3, dc in next ch1-sp, ch 3, 3 dc in next ch3-sp, ch 3**, dc in center sc, ch 3, repeat from * four times ending last repeat at **, dc to last sc, turn.
- Row 7: Ch 3, *3 dc in next ch3-sp, ch 3, sc in next ch3-sp, sc in next dc, sc in next ch3-sp, ch 3, 3 dc in next ch3-sp**, ch 1, repeat from * four times ending last repeat at **, dc in 3rd ch of t-ch, turn.
- Row 8: Ch 3, dc in first dc, *ch 3, sc in next ch3-sp, sc in next 3 sc, sc in next ch3-sp, ch 3**, 3 dc in next ch1-sp, repeat from * four times ending last repeat at **, 2 dc in t-ch, turn.

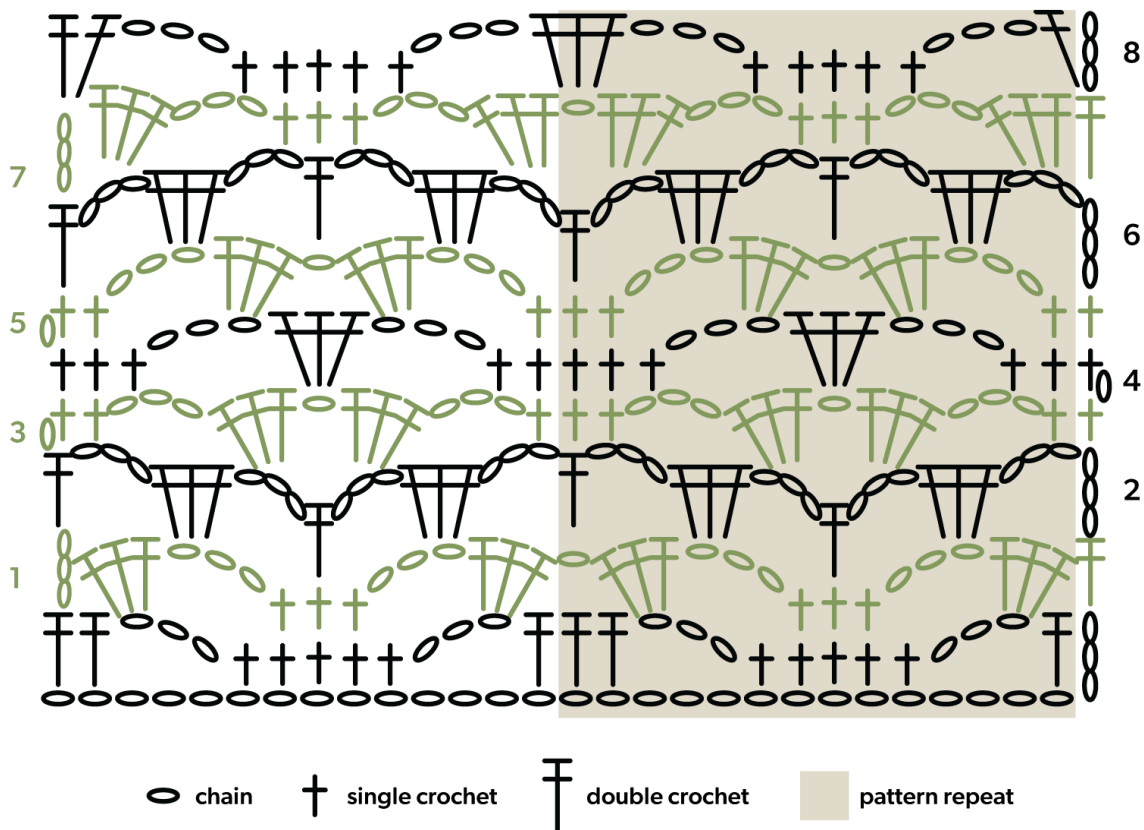
Repeat rows 1 - 8 three times and Rows 1 - 4 one additional time, turn.

Finishing

To finish, sc around entire square by working sc evenly across all four sides and (sc, ch 1, sc) in the same st in each corner space to round corner. Slip stitch into first single crochet to join.

Cut yarn and fasten off.

Weave in ends and block to 10" x 10" square. Enjoy!





Crochet Blanket Square



Needles & Hooks

Designed by
Ginny Harvey

Blanket Square Size: 10" x 10"
(25.4 x 25.4 cm)

Yarn: any DK, light worsted weight, or equivalent yarn (i.e. fingering weight held double) that makes gauge.

Recommended Hook: US H (5 mm) or size needed to achieve gauge.

Gauge: Center flower measures 3.5" point to point.

Supplies: tapestry needle, stitch markers

Special Abbreviations

This is a list of the special abbreviations. Please refer to [Crochet Abbreviations Master List by the Craft Yarn Council](#)

BLO – back loop only
ch – chain
ch-sp – chain space
ch#-sp – chain (indicated number) space
dc – double crochet
dc-cl – double crochet cluster
dc#-cl – dc (indicated number) cluster
hdc – half double crochet
RS – right side
sc – single crochet
sk – skip
sl st – slip stitch
st (sts) – stitch (stitches)
tr – treble crochet
WS – wrong side

Sample was made with Cascade 220 Superwash Merino.

Special Stitches

crossed dc – skip next stitch, dc in next st, dc in skipped st
(counts as 2 stitches)

Notes

Square is worked from the center out, in rounds, until round 7, then will continue in turned rounds to end.

Instructions within parentheses () denote instructions worked in corner or same space, and stitch counts.

Instructions within brackets [] or between * * should be repeated as many times as indicated.

Stitch counts are in listed at the end of each round and include chains.

Pattern Instructions

Ch 4, join with sl st to form a ring.

Round 1: Ch 2 (counts as dc), working into ring, dc, ch 1, [2 dc, ch 1] five times, join with sl st to second ch in beginning ch 2. (12 + 6 ch1-sp is 18 sts)

Round 2: Sl st in next st and into next ch1-sp, ch 3 (counts as dc), (dc, ch 1, 2 dc) in ch1-sp, *(2 dc, ch 1, 2 dc) in each ch1-sp, repeat from * to end of round, join with sl st to second ch of beginning ch 3. (24 dc + 6 ch1-sp is 30 sts)

(continued on next page...)

- Round 3: Sl st in next st and into next ch1-sp, ch 2 (counts as dc), 3 dc in ch-sp, (7 dc in next ch1-sp) five times, 3 dc in starting ch1-sp, join with sl st to second ch of beginning ch 2. (6 dc7-cl is 42 sts)
- Round 4: Ch 4 (counts as sc + ch3), *dc in sp between dc2-cl from round 2 (working over stitches in round 3), ch 3, sc in fourth dc in next dc-cl, ch 3, repeat from * to end of round, join with sl st in first ch of beginning ch 4. (12 ch3-sp + 6 dc + 6 sc is 48 sts)
- Round 5: Ch 1 (counts as sc), *(sc, 2 hdc) in next ch3-sp, dc in next st, (dc, tr, ch 2, tr, dc) in next ch3-sp, dc in next st, (2 hdc, sc) in next ch3-sp, sc in next st, repeat from * three more times, skipping the final sc of the round to join in beginning ch 1 with sl st. (52 sts + 4 ch2-sp is 60 sts)
- Round 6: Ch 3 (counts as hdc + ch 1), sk 1, hdc in next st, (ch 1, sk 1, hdc in next st) two times, *(hdc, ch 2, hdc) in corner, hdc in next st, (ch 1, sk 1, hdc in next st) six times, repeat from * three more times, (hdc, ch 2, hdc) in corner, hdc in next st, (ch 1, sk 1, hdc) two times, ch 1, join with sl st to second ch at beginning of round. (24 ch1-sp + 36 hdc + 4 ch2-sp is 68 sts)
- Round 7: Ch 3 (counts as dc), dc in final ch1-sp of previous round (before ch 3), this will create a crossed dc. Work 4 crossed dc (note: first dc of fourth crossed dc and final crossed dc per side will be worked in the first ch of corner ch2-sp), (dc, ch 2, dc) in corner, *work 8 crossed dc, (dc, ch 2, dc) in corner, repeat from * two more times, on fourth side of square, work 3 crossed dc and join to top of beginning ch 3 with sl st. TURN. (32 crossed dc + 8 dc + 4 ch2-sp is 80 sts)
- Begin turning at the end of every round from now through Round 11.
- Round 8 (WS): Ch 2 (counts as hdc), hdc in next 7 sts, *(1 hdc, ch 2, 1 hdc) in corner, hdc in next 18 sts, repeat from * three times, (hdc, ch 2, hdc) in corner, hdc in next 10 sts, join to top of ch 2 at beginning of round. TURN. (80 hdc + 4 ch2-sp is 88, 20 hdc per side)
- Round 9 (RS): Ch 2 (counts as hdc), working in BLO throughout round, hdc in each st and work (hdc, ch 2, hdc) in each corner, join with sl st to top of ch 2 at beginning of round. TURN. (88 hdc + 4 ch2-sp is 96 sts, 22 hdc per side)
- Round 10 (WS): Ch 3 (counts as dc + ch1), *(sk 1, dc in next st, ch 1) three times, sk 1, dc in next st, *(2 dc, ch 2, 2 dc) in corner, dc in next st, ch1 (sk 1, dc in next st, ch 1) nine times, sk 1, dc in next st, repeat from * three times, (2 dc, ch 2, 2 dc) in corner, dc in next st, (ch 1, sk 1, dc in next st) five times, ch 1, join with sl st to third ch at beginning of round. TURN. (10 ch1-sp per side + 15 dc per side + 4 ch2-sp is 108 sts)
- Round 11 (RS): Ch 1 (counts as sc), sc in each st and ch1-sp to end of round, working (sc, ch 2, sc) in corners, join with sl st to ch 1 at beginning of round. TURN. (108 sc + 4 ch2-sp is 116 sts, 27 sc per side)
- Round 12 (WS): Ch 2 (counts as hdc), hdc in each st around, work (hdc, ch 2, hdc) in corners, join with sl st to second ch at beginning of round. Do not turn. (116 hdc + 4 ch2-sp is 124 sts, 29 hdc per side)
- Round 13 (RS): Ch 2 (counts as hdc), working in BLO throughout round, hdc in each st around, work (2 hdc, ch 2, 2 hdc) in corners, join with sl st to second ch at beginning of round. Do not turn. (132 hdc + 4 ch2-sp is 140 sts, 33 hdc per side)
- Round 14 (WS): Sc in each st around, working (sc, ch 2, sc) in corners. (140 sc + 4 ch2-sp is 148 sts, 35 hdc per side)

At this point, the sample square measured 10".

Repeat Round 14 until piece measures 10" square.

Cut yarn and fasten off.

Weave in ends and block to 10" x 10" square.



Crochet Blanket Square



NORTHWEST
YARNS & MERCANTILE

Northwest Yarns & Mercantile

Designed by
Acacia Goldbach

Blanket Square Size: 10" x 10"
(25.4 x 25.4 cm)

Yarn: any DK, light worsted weight, or equivalent yarn (i.e. fingering weight held double) that makes gauge.

Recommended Hook: Tunisian US H (5 mm) or size needed to achieve gauge.

Gauge: 16 sc and 21 rows over 4" (10cm) in Tunisian Simple Stitch.

Supplies: tapestry needle, stitch markers

Special Abbreviations

This is a list of the special abbreviations. Please refer to [Crochet Abbreviations Master List by the Craft Yarn Council](#)

ch – chain
sc – single crochet
st (sts) – stitch (stitches)
TSS - Tunisian Simple Stitch
yo – yarn over

Sample was made with Queensland Collection Tenderfoot held double throughout.

Special Stitches

Tunisian Simple Stitch (TSS) - Go under first vertical bar, yo, pull up loop. (2 loops on hook)

Notes

All stitches are done in Tunisian Simple Stitch. Carry your yarn behind your work while switching colors to create a stranded colorwork design.

Be careful to leave your yarn loose as to avoid bunching when blocking your final piece.

For row gauge adjustments: TSS in main color for 9 rows, measuring about 2" before starting on accent colorwork. Ending border section should also measure 2 inches. If you adjust rows counts at the beginning, also do so at the end.

Pattern Instructions

With CC, ch 49 loosely.

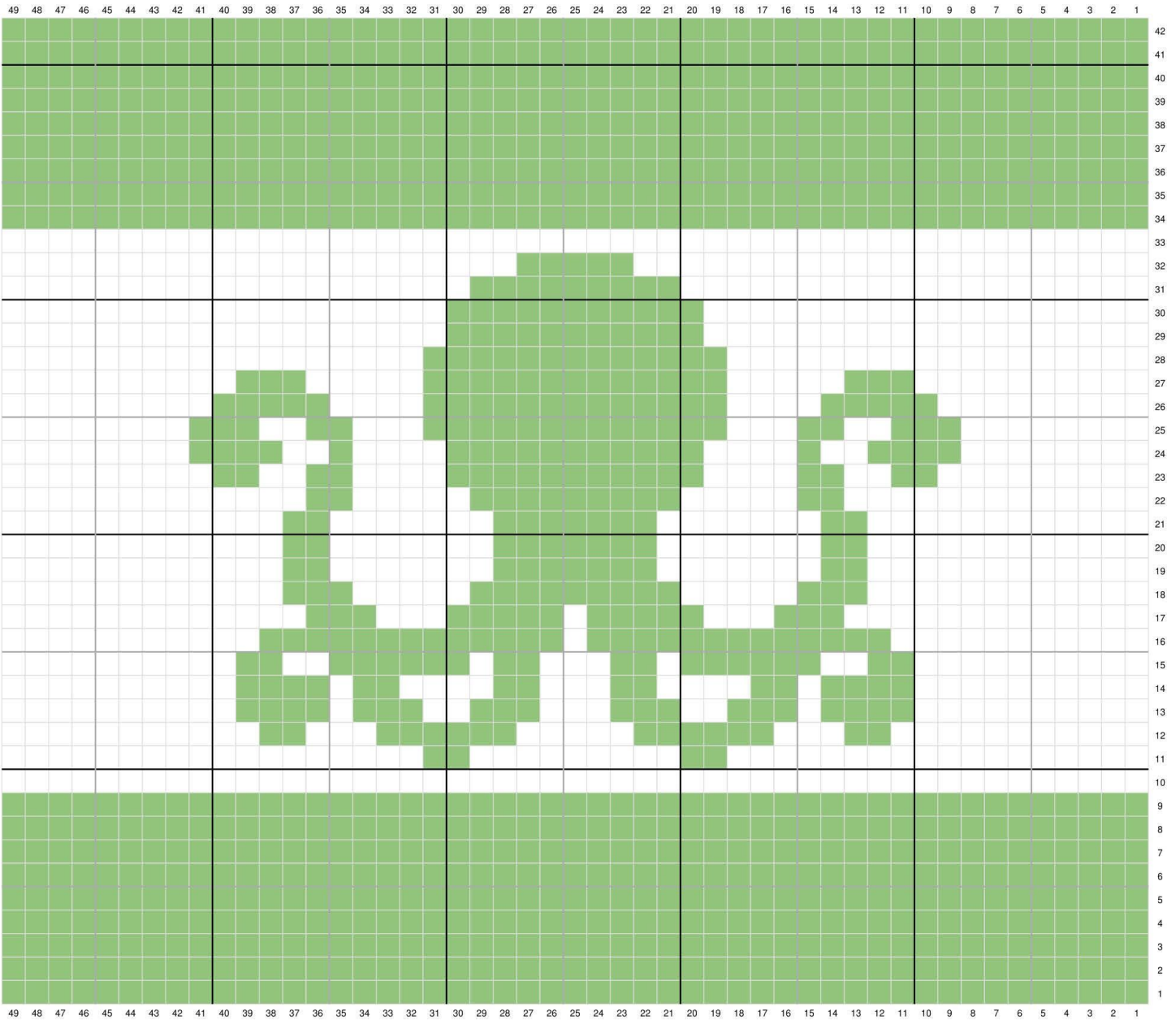
Work your foundation row (Row 1) in CC and continue to follow the chart for the color of each stitch/row.

The final row of the chart is done in the slip stitch bind off.

Finish your work by using your hook to single crochet around the outside, placing 2 stitches in each corner to help round the corner.

Cut yarn and fasten off.

Weave in ends and block to 10" x 10" square.



- Contrast Color stitches - simple stitch
- Main Color Stitches - Simple stitch



Crochet Blanket Square



Quintessential Knits

**Designed by
Vicki Monroe**

Blanket Square Size: 10" x 10"
(25.4 x 25.4 cm)

Yarn: any DK, light worsted weight, or equivalent yarn (i.e. fingering weight held double) that makes gauge.

Recommended Hook: US H (5 mm) or size needed to achieve gauge.

Gauge: Square should measure about 4" after completing Round 5.

Supplies: tapestry needle, stitch markers

Special Abbreviations

This is a list of the special abbreviations. Please refer to [Crochet Abbreviations Master List by the Craft Yarn Council](#)

ch – chain
ch1-sp – ch 1 space
ch2-sp – ch 2 space
ch2-gap – ch 2, skip next 2 sts
dc – double crochet
sc – single crochet
sl st – slip stitch
st (sts) – stitch (stitches)

Sample was made with Malabrigo Rios.

Notes

Square is worked from the center out, in rounds.

After each round, sl st to top of first chain of round.

Ch 2 at beginning of round counts as dc throughout.

First Corner begins the next round: Ch 2 (counts as dc), (dc, ch 2, dc 2) all in first ch2-sp.

Other Corners: (dc 2, ch 2, dc 2) all in next ch2-sp

Instructions within parentheses () denote instructions worked in corner or same space, and stitch counts.

Instructions within brackets [] or between * * should be repeated as many times as indicated.

Stitch counts listed at the end of each round include chains.

Solid colors show pattern off nicely, some fun variations to try include: color changing every 2-3 rounds or working in 3rd loop (back bump, not back loop) every other round.

(continued on next page...)

Pattern Instructions

Ch 5 and sl st to first ch to make a circle. Ch 2 (counts as dc), then, working into the center of the circle:

Round 1: Dc, (ch 2, dc 2) three times, ch 2 and sl st in top of first ch-2. (2 dc each side and 4 ch2-sp corners)

Round 2: Ch 2, (dc, ch 2, dc 2) all in first ch2-sp, *dc in each of next 2 sts, (dc 2, ch 2, dc 2) all in next ch2-sp, repeat from * three times, dc in each of next 2 sts, sl st to top of first ch-2. (6 dc each side and 4 ch2-sp corners)

Round 3: Ch 2, (dc, ch 2, dc 2) all in first ch2-sp, ch 2, skip next two sts, dc 4, *(dc 2, ch 2, dc 2) all in next ch2-sp, ch 2, skip next two sts, dc 4, repeat from * three times, sl st to top of first ch-2. (8 dc each side and 4 ch2-sp corners)

Round 4: Ch 2, (dc, ch 2, dc 2) all in first ch2-sp, dc 2, dc 2 in ch2-gap, ch 2, skip next two sts, dc 4, *(dc 2, ch 2, dc 2) all in next ch2-sp, dc 2, dc 2 in ch2-gap, ch 2, skip next two sts, dc 4, repeat from * three times, sl st to top of first ch-2. (12 dc each side and 4 ch2-sp corners)

Round 5: Ch 2, (dc, ch 2, dc 2) all in first ch2-sp, ch 2, skip next two sts, dc 4, dc 2 in ch2-gap, ch 2, skip next 2 sts, dc 4, *(dc 2, ch 2, dc 2) all in next ch2-sp, ch 2, skip next 2 sts, dc 4, dc 2 in ch2-gap, ch 2, skip next 2 sts, dc 4, repeat from * three times, sl st to top of first ch-2. (14 dc each side and 4 ch2-sp corners)

Round 6: Ch 2, (dc, ch 2, dc 2) all in first ch2-sp, dc 2, dc 2 in ch2-gap, [ch 2, skip next 2 sts, dc 4, dc 2 in next ch2-gap] to corner omitting last 2 dc, *(dc 2, ch 2, dc 2) all in next ch2-sp, dc 2, dc 2 in ch2-gap, [ch 2, skip next 2 sts, dc 4, dc 2 in next ch2-gap] to corner omitting last 2 dc, repeat from * three times, sl st in top of 1st ch-2

Round 7: Ch 2, (dc, ch 2, dc 2) all in first ch2-sp, [ch 2, skip next 2 sts, dc 4, dc 2 in ch2-gap] to corner omitting last 2 dc, *(dc 2, ch 2, dc 2) all in next ch2-sp, [ch 2, skip next 2 sts, dc 4, dc 2 in ch2-gap] to corner omitting last 2 dc, repeat from * three times, sl st in top of 1st ch-2.

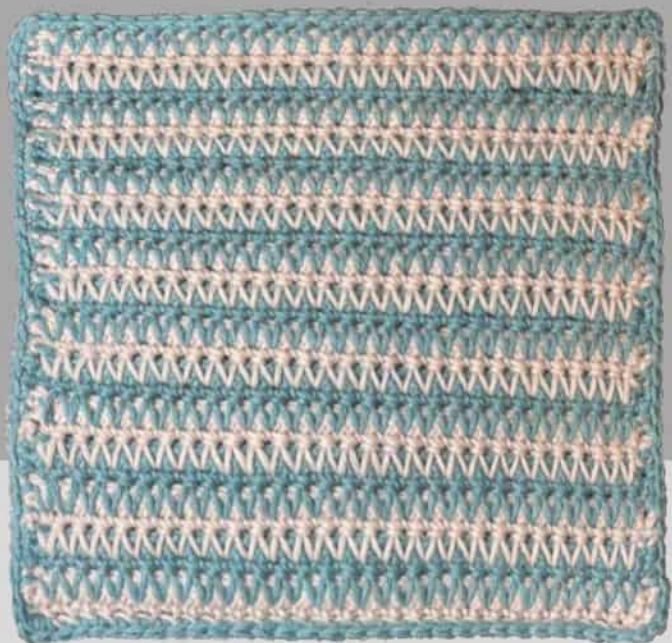
Repeat Rounds 6 and 7 until piece measures 9.5" square.

Border Round 1: Ch 1, (sc, ch 2, sc 2) all in first ch2-sp, sc around, working 2 sc in each ch2-gap and (sc 2, ch 2, sc 2) in every corner, sl st in top of 1st ch-1.

Border Round 2: Ch 1, (sc, ch 2, sc 2) all in first ch1-sp, sc around, working (sc 2, ch 2, sc 2) in every corner, sl st in top of 1st ch-1.

Cut yarn and fasten off.

Weave in ends and block to 10" x 10" square.



Crochet Blanket Square



Sea Bre's Yarn

Designed by
Robin Lachnit

Blanket Square Size: 10" x 10"
(25.4 x 25.4 cm)

Yarn: any DK, light worsted weight, or equivalent yarn (i.e. fingering weight held double) that makes gauge.

Recommended Hook: US H (5 mm) or size needed to achieve gauge.

Gauge: 12 sc over 4" (10cm), each stripe of four rows should measure about 1".

Supplies: tapestry needle, stitch markers

Special Abbreviations

This is a list of the special abbreviations. Please refer to [Crochet Abbreviations Master List by the Craft Yarn Council](#)

ch – chain
dc – double crochet
fpdc - front post dc
hdc – half-double crochet
sc – single crochet
sl-st – slip stitch
st (sts) – stitch (stitches)

Sample was made with Cascade 220 in White Sands and Summer Sky

Special Stitches

Spike stitch: Insert hook in sc three rows below, pull up a loop to the height of the current stitches, yarn over and pull through both loops on the hook.

Pattern Instructions

Ch 31.

Row 1: Sc in second chain from hook and in each across. (30)

Row 2 – 3: Ch 1, turn, SC in each stitch across. (30)

Row 4: Change color (pull up a loop in new color) sl-st in first sc, spike stitch across to last st, sl-st in last st. (28 spike sts, 2 sl-st)

Row 5 – 7: Ch 1, turn, sc in each stitch across. (30 sc)

Repeat Rows 4 – 7 thirteen times or until piece measures just under 9 1/2".

Repeat Row 4.

Border: Ch 1 turn, sc in each st across to last st, work 3 sc in last stitch for corner, sc 30 evenly across the edge of square, work 3 sc in corner, sc across the foundation chain, work 3 sc in corner, sc 30 sts evenly across the edge of square, work 2 sc in same space as first ch and join with a sl-st.

Cut yarn and fasten off.

Weave in ends and block to 10" x 10" square. Enjoy!



Crochet Blanket Square



Seattle Yarn

Designed by
Ginny Harvey

Blanket Square Size: 10" x 10"
(25.4 x 25.4 cm)

Yarn: any DK, light worsted weight, or equivalent yarn (i.e. fingering weight held double) that makes gauge.

Recommended Hook: US G (4 mm) or size needed to achieve gauge.

Gauge: 8 dc-cl over 4" (10cm) after blocking.

Supplies: tapestry needle, stitch markers

Special Abbreviations

This is a list of the special abbreviations. Please refer to [Crochet Abbreviations Master List by the Craft Yarn Council](#)

ch – chain
dc – double crochet
dc-cl – double crochet cluster
hdc – half double crochet
sc – single crochet
sl st – slip stitch
st (sts) – stitch (stitches)
yo – yarn over

Sample was made with Huephoria Fibers Student Council DK in color Junior Band.

Special Stitches

Double Crochet Cluster (dc-cl) – *yo, insert hook into ch or st as indicated, yo, pull up a loop, yo, and pull through 2 loops*, skip 1 ch or st, repeat from * as indicated, into next st, yo, pull through all 3 loops on hook.

Notes

Instructions within parentheses () indicates that everything within is worked into the same st or corner.

Instructions within brackets [] or * * indicates that everything within should be repeated the listed amount of times

Ch at beginning of row counts as 1 dc throughout.

Pattern Instructions

Ch 38 (multiple of 2 + 2).

Row 1: Work dc-cl in third ch from hook (skipped chains count as 1 dc), ch 1, *dc-cl inserting hook into same ch as previous dc-cl, ch 1, repeat from * to end of row, ending row with 1 dc into last ch, turn. (36)

Row 2: Ch 3, dc-cl inserting hook into first st (at base of ch), ch 1, *dc-cl inserting hook into same st as previous dc-cl, ch 1, repeat from * to end of row, ending row with dc in top of turning ch, turn. (36)

Repeat Row 2 until you have a square, turn.

(continued on next page...)

Border Row 1: Ch 2 (counts as hdc), work hdc in next st and each across, working (2 hdc, ch 2, 2 hdc) in last st (corner made), *rotate square 90 degrees to the right and work 35 sts evenly across, work (2 hdc, ch 2, 2 hdc) in corner, repeat from * two more times, working (2 hdc, ch 2, hdc) in final st. Join to starting ch 2 with sl st, turn

Border Row 2: Ch 1, work sc in each st around square working (sc, ch 2, sc) in each corner.

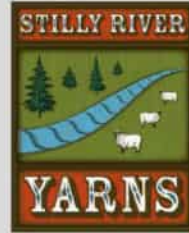
Repeat Border Row 2 until your square measures approximately 10x10".

Cut yarn and fasten off.

Weave in ends and block to 10" x 10" square.



Crochet Blanket Square



Stilly River Yarns

**Designed by
Nona Davenport**

Blanket Square Size: 10" x 10"
(25.4 x 25.4 cm)

Yarn: any DK, light worsted weight, or equivalent yarn (i.e. fingering weight held double) that makes gauge.

Recommended Hook: US G (4.00 mm) or size needed to achieve gauge.

Gauge: 20 sc and 18 rows = 4" (10 cm) in pattern, after blocking.

Supplies: tapestry needle, stitch markers

Special Abbreviations

This is a list of the special abbreviations. Please refer to [Crochet Abbreviations Master List by the Craft Yarn Council](#)

- B – Bobble
- BLO – back loop only
- ch – chain
- dc – double crochet
- hdc – half-double crochet
- MP – Modified Puff
- sc – single crochet
- sl – slip stitch
- sk – skip
- st (sts) – stitch (stitches)
- yo – yarn over

Sample was made with Berroco Vintage DK.

Special Stitches

Modified Puff (MP) - (yo, insert hook into st and draw up a loop extending the leg of the stitch) repeat two times, yo, pull through 4 loops, yo, pull through the last 2 loops.

Bobble (B) – (yo, insert hook into st and draw up a loop extending the leg of the stitch) repeat five times, yo, pull through all 11 loops on your hook, ch1 to close the bobble.

Notes

Instructions within parentheses () denote instructions worked in corner or same space, and stitch counts.

Instructions within brackets [] or between * * should be repeated as many times as indicated.

Stitch counts are in listed at the end of each round and include chains.

Each row begins with a Ch 1. This is a turning chain and should not be counted as a stitch.

You should have 48 sts throughout.

Bobbles are made on the Wrong Side (WS) and will appear on the RS (RS).

See next page for helpful photos.

(continued on next page...)

Pattern Instructions

Ch 49.

Row 1 (RS): Sc in 2nd ch from hook, sc in each ch across. (48 sc)

Rows 2 – 3: Ch 1, BLO sc in each st across.

Row 4: Ch 1, sc, sk 1, [sc, MP in sk st, sk sc and next st] twenty-three times, sc.

Row 5: Repeat Row 4.

Rows 6 – 7: Ch 1, BLO sc in every st across.

Rows 8 – 9: Ch 1, sc in every st across.

Row 10: Ch 1, [sc in next 3 sts, B in next st] eleven times, sc in next 4 sts. *Bobbles made on this row.*

Row 11: Ch 1, [sc in next 4 sts, sk ch from B] eleven times, sc in next 3 sts. *Bobbles will appear on this row.*

Rows 12 – 13: Ch 1, sc in every st across.

Repeat Rows 2 – 13 two more times.

Then repeat Rows 2 – 7 once more.

Cut yarn and fasten off.

Weave in ends and block to 10" x 10" square. Enjoy!

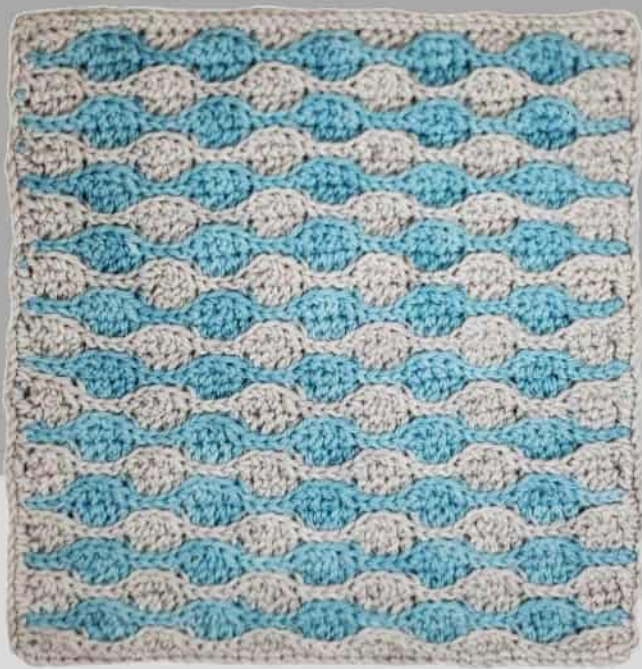


When working the modified puff rows, sc in these sts. Work the modified puff in the skipped st.

Work the second row of modified puffs in the same way. Sc into the the stitch that feels tighter, then work a modified puff in the skipped st. The faux cables will be slightly offset. They are also reversible and appear on the RS and WS.



Bobble: [yo, insert hook into st and draw up a loop] 5 times. This will give you 11 loops on your hook. Make sure loops are slightly taller than a normal st. Yo and pull through all the loops, ch1 to close the bobble. **Tip:** pull down firmly on the loops as you draw your hook through.



Crochet Blanket Square



Stranded by the Sea

**Designed by
Owl Spun**

Blanket Square Size: 10" x 10"
(25.4 x 25.4 cm)

Yarn: any DK, light worsted weight, or equivalent yarn (i.e. fingering weight held double) that makes gauge.

Recommended Hook: US H (5 mm) or size needed to achieve gauge.

Gauge: 19 sts x 18 rows over 4" (10cm) unblocked.

Supplies: tapestry needle, stitch markers

Special Abbreviations

This is a list of the special abbreviations. Please refer to [Crochet Abbreviations Master List by the Craft Yarn Council](#)

CC – Contrast Color

ch – chain

ehdc – extended half double crochet

hdc – half double crochet

MC – Main Color

rep – repeat the [] instructions

RS – right side

sc – single crochet

sc3inc – three single crochets in one stitch

st (sts) – stitch (stitches)

sl st – slip stitch

WS – wrong side

yo – yarn over

Sample was made with Stranded Studio Narwhal Minis (20g), 100% Superwash Merino, in two contrasting colors:

2 Minis in Main Color (MC): Sea Salt

2 Minis in Contrast Color (CC): Aqueous Pale

Special Stitches

Backloops – instead of crocheting through both loops, only work your stitches in the farthest loop.

Extended Half Double Crochet (ehdc) – This stitch is a hdc with one extra step to make it 30% taller. It is shorter than a double crochet. Yarn over, insert the hook into the next stitch, and pull up a loop. Yarn over and pull a single loop (3 loops on hook). Yarn over again and pull through all 3 loops.

Notes

Color Change - Before completing the final stitch of rows 2 and 4, switch to the next color. (i.e., hdc = yarn over, insert hook & pull up a loop. Switch to new color and pull through all 3 loops on hook). Do not cut yarn - alternate along the edge leaving plenty of slack for stretch.

Row 1 & 2, and 3 & 4 are each their own "wave". Within each wave, the same stitches stack on top of each other. When you start a new wave (row 1 and 3), hdc goes on top of the sl st.

After working the first 4 rows, it should measure close to 9.5" wide.

(continued on next page...)

Pattern Instructions

Set Up Row

With MC, ch 45, skip 1, hdc, 2 ehdc, hdc. [4 sl st, hdc, 2 ehdc, hdc] repeat until end. (44 sts)

Tiamat Waves Pattern Rows

ALL pattern rows are worked in backloops only!

Switch to CC

Row 1: Ch 1, 4 sl st, [hdc, 2 ehdc, hdc, 4 sl st] repeat to end, turn. (44 sts)

Row 2: Ch 1, 4 sl st, [hdc, 2 ehdc, hdc, 4 sl st] repeat to end, turn. (44 sts)

Switch to MC

Row 3: Ch 1, hdc, 2 ehdc, hdc, [4 sl st, hdc, 2 ehdc, hdc] repeat to end, turn. (44 sts)

Row 4: Ch 1, hdc, 2 ehdc, hdc, [4 sl st, hdc, 2 ehdc, hdc] repeat to end, turn. (44 sts)

Repeat pattern rows until square measures close to 10", ending after working Row 3 with MC.

Border

All border stitches are worked through both loops of stitch.

Continuing with MC

Border Round: Across side of square [sc evenly, about 4 or 5 sc, in each MC wave section, skip CC wave sections], sc3inc in the corner, sc in each stitch along top/bottom of square, sc3inc in the corner, repeat from beginning for rest of square, sl st to the first sc.

Weave in ends and block to 10" x 10" square. Enjoy!



Crochet Blanket Square

STRIKKE
YARN & SUPPLY

Strikke Yarn & Supply

Designed by
Nona Davenport

Blanket Square Size: 10" x 10"
(25.4 x 25.4 cm)

Yarn: any DK, light worsted weight, or equivalent yarn (i.e. fingering weight held double) that makes gauge.

Recommended Hook: US H (5 mm) or size needed to achieve gauge.

Gauge: Rounds 1 - 6 is approximately 4" x 4" (10cm) unblocked.

Supplies: tapestry needle, stitch markers

Special Abbreviations

This is a list of the special abbreviations. Please refer to [Crochet Abbreviations Master List by the Craft Yarn Council](#)

ch – chain
ch1-sp – chain 1 space
dc – double crochet
NJ – Needle Join
P - Puff
Rnd – Round
RS – right side
sc – single crochet
st (sts) – stitch (stitches)
sl st – slip stitch
WS – wrong side
yo – yarn over

Sample was made with Malabrigo Rios.

Special Stiches

Puff (P): [yo, insert hook into st and draw up a loop] 3 times, yo and pull through all 7 loops on your hook.

Tip: Make sure loops are slightly taller than a normal stitch.

Needle Join (NJ): <https://tinyurl.com/5n8j6kj>

Standing sc/dc: <https://tinyurl.com/53f29h8b>

Notes

Instructions within parentheses () denote corner instructions.

Instructions within brackets [] or between * * should be repeated as many times as indicated.

Pattern may be worked without breaking the yarn, but it is recommended to fasten off with a Needle Join (NJ) when indicated and to begin the next round with a standing stitch (either sc or dc) in any corner space.

Place markers in the corners to help keep your place.

With the exception of Round 2, all puffs are made on the Wrong Side (WS).

(continued on next page...)

Pattern Instructions

Rnd 1 (RS): Begin by making a magic ring. Ch 1 (does not count as a stitch here and throughout), work 8 sc into the ring, sl st to first sc to join. Do not break yarn.

Rnd 2 (RS): [P into first sc, ch 2, P into next sc, ch 1] four times, sl st into top of first P to connect.
Note: Ch2 spaces will become the corners, place markers in the corners, if desired.

Rnd 3 (RS): Sl st to next corner, ch 1, [(2 sc, ch 2, 2 sc) into corner, sk P, 3 sc into ch1-sp, sk P] four times. Fasten off with NJ.

Rnd 4 (RS): Work standing dc in any corner to begin round. [(Dc, ch 2, dc) into corner, dc into next 7 sts] four times, sl st into top of first dc, sl st into corner sp. TURN to face WS.

Rnd 5 (WS): *(P, ch 2, P, ch 1) into corner, [sk st, P, ch 1] to one st before corner, sk st, repeat from * four times. Fasten off with NJ. TURN to face RS. (6 P per side)

Rnd 6 (RS): Work standing sc in any corner, *(2 sc, ch 2, 3 sc) into corner, [sk P, 2 sc between P] to corner, repeat from * four times. Fasten off with NJ. (15 sc per side)

Rnd 7 (RS): Work standing dc in any corner, [(dc, ch 2, dc) into corner, dc into each st to corner] four times, sl st into top of first dc, sl st into corner. TURN to face WS. (17 dc per side)

Rnd 8 (WS): Repeat Round 5. (10 P per side)

Rnd 9 (RS): Repeat Round 6. (23 sc per side)

Rnd 10 (RS): Repeat Round 7. (25 dc per side)

Rnd 11 (WS): Repeat Round 5. (14 P per side)

Rnd 12 (RS): Repeat Round 6. (31 sc per side)

Rnd 13 (RS): Repeat Round 7. (33 dc per side)

Rnd 14 (WS): Repeat Round 5. (18 P per side)

Rnd 15 (RS): Repeat Round 6. (39 sc per side)

Cut yarn and fasten off.

Weave in ends and block to 10" x 10" square. Enjoy!



Crochet Blanket Square



The Knitters Studio

**Designed by
Rene Dickey**

Blanket Square Size: 10" x 10"
(25.4 x 25.4 cm)

Yarn: any DK, light worsted weight, or equivalent yarn (i.e. fingering weight held double) that makes gauge.

Recommended Hook: US H (5 mm) or size needed to achieve gauge.

Gauge: 16 sts and 8 rows over 4" (10cm) in pattern.

Supplies: tapestry needle, stitch markers

Special Abbreviations

This is a list of the special abbreviations. Please refer to [Crochet Abbreviations Master List by the Craft Yarn Council](#)

ch – chain
ch3-sp – chain 3 space
dc – double crochet
RS – Right Side
sc – single crochet
st (sts) – stitch (stitches)
WS – Wrong Side

Sample was made with Polka Dot Sheep Stumptown DK.

Pattern Instructions

Ch 48.

Begin Shell Stitch:

Set up row: Dc in 5th ch from hook, (skipped 4 chs count as first ch 1 and dc), ch 3, dc in same ch, *ch 1, skip 4 ch, dc in next ch, ch 3, dc in same ch, repeat from * seven more times, ch 1, skip 2 ch, dc in last ch.

Row 1 (RS): Ch 3, * 7 dc in ch3-sp from previous row, repeat from * eight more times, dc in 3rd ch from ch 4 of previous row.

Row 2 (WS): Ch 4, (counts as first ch 1 and dc), skip 3 dc from previous row, *dc in next dc, ch 3, dc in same dc, ch 1, skip 6 dc, repeat between * eight more times, dc in 3rd ch of previous row.

Repeat Rows 1 and 2 until work measures 10" (25 cm) ending with Row 2.

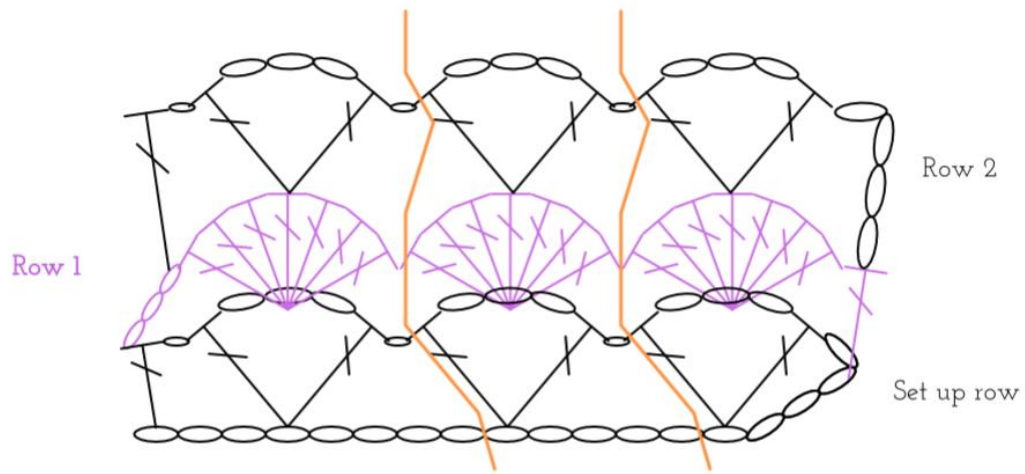
To finish, sc around entire square by working sc evenly across all four sides and 3 sc in each corner space to round corner.

Cut yarn and fasten off.

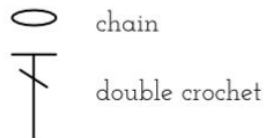
Weave in ends and block to 10" x 10" square. Enjoy!

(continued on next page for Shell Stitch Chart...)

Shell Stitch Chart:

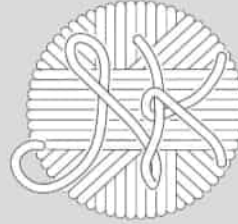


Repeat the stitches between the orange lines as needed.
Work Rows 1 and 2 for pattern.





Crochet Blanket Square



The New Knittery

Designed by
Johann Stoessel

Blanket Square Size: 10" x 10"
(25.4 x 25.4 cm)

Yarn: any DK, light worsted weight, or equivalent yarn (i.e. fingering weight held double) that makes gauge.

Recommended Hook: Tunisian US H (5 mm) or size needed to achieve gauge.

Gauge: 8 "cells" over 4" (10cm) after blocking.

Supplies: tapestry needle, stitch markers

Special Abbreviations

This is a list of the special abbreviations. Please refer to [Crochet Abbreviations Master List by the Craft Yarn Council](#)

ch – chain
sc – single crochet
st (sts) – stitch (stitches)
TPS - Tunisian Purl Stitch
TSS - Tunisian Simple Stitch
yo – yarn over

Sample was made with HiKoo Sueno.

Special Stitches

Tunisian Simple Stitch (TSS) - Go under first vertical bar, yo, pull up loop. (2 loops on hook)

Tunisian Purl Stitch (TPS) - Move working yarn to bottom of hook, insert hook into vertical bar, move working yarn up behind hook, yo from back to front, draw up a loop. (3 loops on hook)

Notes

Instructions between * * should be repeated as many times as indicated.

Pattern Instructions

Ch 35 loosely.

Row 1: With Tunisian hook, skip first back loop and go into back loops of chains - should have 34 loops on hook.

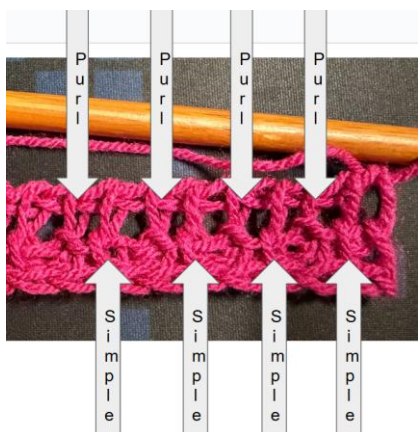
Row 2 (Return Pass): Yo pull through 1 (sets the edge), yo pull through 2 all the way until only a single loop remains on hook.

Row 3: *TSS TPS, repeat from * to end of row, at end of row, go through both vertical bars.

(continued on next page...)

Row 4 (Return Pass): Yo pull through 1 (sets the edge), yo pull through 2 all the way until only a single loop remains on hook

You should see the yarn going directly through the simple stitches and a twist (Purl Bump) on the purl stitches



Row 5: TPS into the TSS and TSS in to the TPS to end of row.

Continue to alternate rows to desired width.

After the second return pass, you should see the bottom half of your honeycomb shapes. You should also notice that the TPS stitches seem to be recessed a little while the TSS stitches are more forward. At the end of the third return pass, the first row of honeycombs are complete and the second row is halfway there.

After five return passes - you should clearly see your matching edges and the honeycomb really taking shape



Making sure that you skip an even number of vertical bars allows you to keep your honeycomb pattern continuing with the least amount of interruption.

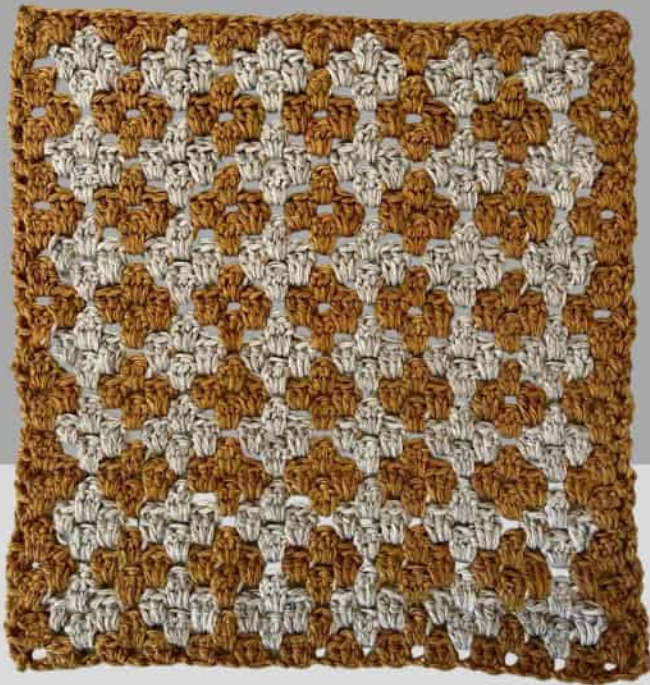
Binding Off:

Go through loops like TSS, completing a single crochet across. Be sure to catch both vertical loops of the ending bar.



Cut yarn and fasten off.

Weave in ends and block to 10" x 10" square.



Crochet Blanket Square



The Nifty Knitter

Designed by
Nona Davenport

Blanket Square Size: 10" x 10"
(25.4 x 25.4 cm)

Yarn: any DK, light worsted weight, or equivalent yarn (i.e. fingering weight held double) that makes gauge.

Recommended Hook: US H (5 mm) or size needed to achieve gauge.

Gauge: 19 sts x 18 rows over 4" (10cm) unblocked.

Supplies: tapestry needle, stitch markers

Special Abbreviations

This is a list of the special abbreviations. Please refer to [Crochet Abbreviations Master List by the Craft Yarn Council](#)

CC – Contrast Color

ch – chain

ch-sp – chain space

dc - double crochet

dc-cl - double crochet cluster (three dc in the same space)

MC – Main Color

RS – right side

sk - skip

sp (sps) - space (spaces)

st (sts) – stitch (stitches)

sl st – slip stitch

WS – wrong side

yo – yarn over

Sample was made with Berroco Vintage DK.

Notes

Instructions within brackets [] should be repeated as specified.

Each row begins with a ch 3. These are turning chains and always count as a dc. Edges will alternate: 2 dc per edge on RS rows, 1 dc per edge on WS rows.

To change colors, work a dc in the old color until 2 loops remain, yo in the new color and pull through 2.

When you carry the unused yarn along, crochet over it while working in the other color.

Always work the edge sts with the MC.

(continued on next page...)

Pattern Instructions

With MC, ch 43.

Row 1 (RS): Dc in fourth ch from the hook (this counts as first 2 dc), [sk 2 ch, dc-cl in next ch] to last three chains, sk 2 ch, 2 dc in last ch. Turn. (12 MC dc clusters, plus 2 dc on each edge)

Row 2 (WS): With MC, ch 3, dc-cl in first sp, [change to CC, dc-cl in next sp, change to MC, dc-cl in next sp] to end of row, on the last cluster with the CC, drop yarn to front of work, with MC dc between last two dc from previous row. Turn. (7 MC clusters, 6 CC clusters, plus 1 dc on each edge in MC)

Row 3 (RS): With MC, ch 3, dc into first sp, change to CC, dc-cl in each of the next 12 sps (crocheting over MC and over the MC loops visible from the previous row), change to MC, dropping CC to front of work, 2 dc in the last ch-sp. Turn. (12 CC dc clusters, plus 2 dc on each edge in MC)

Row 4 (WS): Repeat Row 2.

Optional: Cut CC yarn. If you do not, a line of CC yarn will show on the front of your work leading up to the next cluster where it is used.

Row 5 (RS): With MC, ch 3, dc into first sp, dc-cl into each sp across, 2 dc in last ch-sp.

Repeat Rows 2 - 5 six more times. (7 sets of CC motifs)

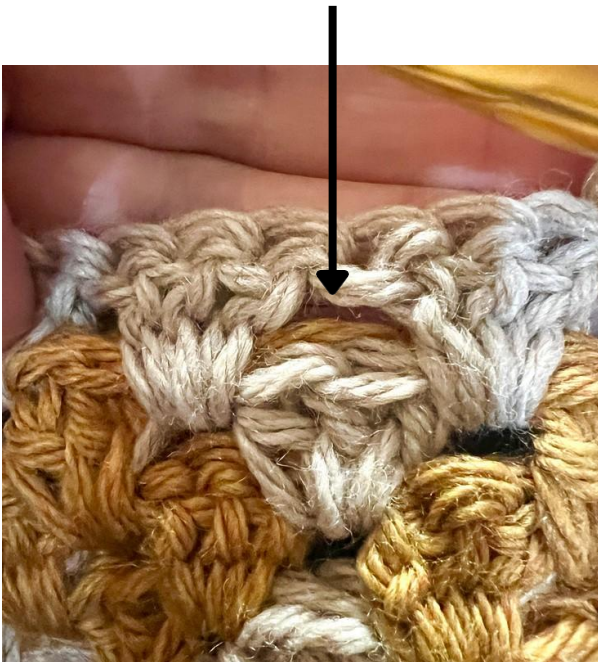
Border Row: Ch 1, work sc in each st around square working (sc, ch 2, sc) in each corner.

Repeat Border Row until your square measures approximately 10x10".

Cut yarn and fasten off.

Weave in ends and block to 10" x 10" square. Enjoy!

When the yarn carried on the previous round is visible, slip your hook under it and crochet it in with the next cluster. In the example below, the yellow loop is visible above a white cluster in the first photo. In the second photo, the cluster will be made with white yarn over the yellow yarn being carried along AND over the yellow loop below (by tucking the hook under the yellow loop drawing it upwards).





Crochet Blanket Square



The Tea Cozy Yarn Shop

**Designed by
Emily Keller**

Blanket Square Size: 10" x 10"
(25.4 x 25.4 cm)

Yarn: any DK, light worsted weight, or equivalent yarn (i.e. fingering weight held double) that makes gauge.

Recommended Hook: US H (5 mm) or size needed to achieve gauge.

Gauge: 20 sts and 28 rows over 4" (10cm) in pattern.

Supplies: tapestry needle, stitch markers

Special Abbreviations

This is a list of the special abbreviations. Please refer to [Crochet Abbreviations Master List by the Craft Yarn Council](#)

ch – chain
ch1-sp – chain 1 space
dc – double crochet
fptr – front post treble crochet
RS – right side
sc – single crochet
st (sts) – stitch (stitches)
WS – wrong side

Sample was made with _____

Special Stitches

Front Post Treble Crochet (fptr) – yo hook two times, insert hook behind post of st, yo and pull up a loop (*four loops are on hook*), yo and pull through 2 loops, yo and pull through 2 loops, yo and pull through last 2 loops.

Pattern Instructions

Ch 47.

Row 1 (RS): 1 dc in third ch from hook and each ch to end, turn.

Row 2 (WS): Ch 1 (does not count as st), 1 sc in each st to end, turn.

Row 3 (RS): Ch 2 (does not count as st), 1 dc in first st, *1 fptr in corresponding dc two rows below, 1 dc in next st, repeat from * to end, turn.

Row 4 (WS): Repeat Row 2.

Row 5 (RS): Ch 2, 1 fptr in first dc two rows below, *1 dc in next st, 1 fptr in corresponding dc two rows below, repeat from * to end, turn.

Repeat Rows 2 – 5 until square measures 10" and ending with WS row.

Cut yarn and fasten off.

Weave in ends and block to 10" x 10" square. Enjoy!



Crochet Blanket Square

THE YARN OUTFITTER



YARN • FIBER • TOOLS • GIFTS

Designed by **Monica Jacobs**

Blanket Square Size: 10" x 10"
(25.4 x 25.4 cm)

Yarn: any DK, light worsted weight, or equivalent yarn (i.e. fingering weight held double) that makes gauge.

Recommended Hook: US H (5 mm) or size needed to achieve gauge.

Gauge: Round 1 -5 blocked is approximately 4" x 4" (10cm).

Supplies: tapestry needle, stitch markers

Special Abbreviations

This is a list of the special abbreviations. Please refer to [Crochet Abbreviations Master List by the Craft Yarn Council](#)

ch – chain
ch3-sp – chain 3 space
dc – double crochet
hdc – half double crochet
MR – magic ring
Rnd – round
sc – single crochet
sl st – slip stitch
st (sts) – stitch (stitches)
ysk – yarn skein stitch

Sample was made with Cascade 220 Superwash.

Special Stitches

Yarn Skein Stitch (ysk) – This stitch is similar to a front-post double crochet, but with an extra twist!
yarn over, insert hook around post of stitch below from front to back and pull up a loop (3 loops on hook), yarn over and pull through two loops (two loops left on hook), yarn over, insert hook around same post of stitch below from front to back and pull up a loop (4 loops on hook), yarn over and pull through two loops (3 loops remain on hook), yarn over and pull through the remaining 3 loops.

Notes

Ch 1 at the beginning of a round does not count as a stitch.

Ch 3 at the beginning of a round counts as a double crochet.

If you prefer, you may use a stacked single crochet or a standing double crochet as first double crochet in a round.

Instructions within parentheses () denote the creation of a corner.

Instructions within brackets [] should be repeated until you've reached the correct place in the round.

(continued on next page...)

Pattern Instructions

Make MR.

Rnd 1: Ch 1, hdc eight times, pull tail to close MR, sl st into first hdc to join. (8 sts)

Rnd 2: Ch 3 (counts as dc here and throughout pattern), 2 dc in same st, *(dc, ch 3, dc) in next st to make first corner, 3 dc in the next st, repeat from * twice more, in last st, (dc, ch 3, dc) to make last corner, sl st into top of ch 3 to join. (20 sts, 4 ch3-sp)

Rnd 3: Ch 1, sc in same st, ysk around post of next st, sc in next 2 sts *(sc, ch 3, sc) in corner space, sc in next 2 sts, ysk, sc in next 2 sts, repeat from * twice more, (sc, ch 3, sc) in corner space, sc into last st, sl st to join. (28 sts, 4 ch3-sp)

Rnd 4: Ch 3, *dc in each st to corner, (dc, ch 3, dc) in corner space, repeat from * three more times, dc in remaining sts to end of round, sl st to join. (36 sts, 4 ch3-sp)

Rnd 5: Ch 1, sc in same st, sc in next two sts, *ysk, sc in next 2 sts, (sc, ch 3, sc) in corner space, sc in next two sts, ysk, sc in next 3 sts, repeat from * twice more, ysk, sc in next two sts, (sc, ch 3, sc) in corner space, sc in next 2 sts, ysk around post of last st of rnd, sl st to join. (44 sts, 4 ch3-sp)

Rnd 6: Repeat Rnd 4. (52 sts, 4 ch3-sp)

Rnd 7: Ch 1, sc in same st, ysk around post of next st, *[sc in next 3 sts, ysk] until 2 sts before corner, sc in next two sts, (sc, ch 3, sc) in corner space, sc in next 2 sts, ysk, repeat from * three more times, sc in last two sts of rnd, sl st to join. (60 sts, 4 ch3-sp)

Rnd 8: Repeat Rnd 4. (68 sts, 4 ch3-sp)

Rnd 9: Ch 1, sc in same st, sc in next 2 sts, ysk, *[sc in next 3 sts, ysk] until 2 sts before corner, sc in next two sts, (sc, ch 3, sc) in corner space, sc in next two sts, ysk, repeat from * three more times, sc in next 3 sts, ysk in last st of rnd, sl st to join. (76 sts, 4 ch3-sp)

Rnd 10: Repeat Rnd 4. (84 sts, 4 ch3-sp)

Rnd 11: Ch 1, sc in same st, ysk around post of next st, *[sc in next 3 sts, ysk] until 2 sts before corner, sc in next two sts, (sc, ch 3, sc) in corner space, sc in next two sts, ysk, repeat from * three more times, sc in next 3 sts, ysk, sc in last two sts of rnd, sl st to join. (92 sts, 4 ch3-sp)

Rnd 12: Ch 1, hdc in same st, *hdc in each st to corner, (hdc, ch 3, hdc) in corner space, repeat from * three more times, hdc in remaining sts to end of rnd, sl st to join. (100 sts, 4 ch3-sp)

Rnd 13: Ch 1, sc in same st, *sc in each st to corner, (2 sc, ch 1, 2 sc) in corner space, repeat from * three more times, sc in remaining sts to end of rnd, sl st to join. (116 sts, 4 ch3-sp)

Cut yarn and fasten off.

Weave in ends and block to 10" x 10" square. Enjoy!



Crochet Blanket Square



WildFibers - Designed by Bethany Halpin

Blanket Square Size: 10" x 10"
(25.4 x 25.4 cm)

Yarn: any DK, light worsted weight, or equivalent yarn (i.e. fingering weight held double) that makes gauge.

Recommended Hook: US G (4 mm) or size needed to achieve gauge.

Gauge: Rounds 1 - 6 is approximately 4" x 4" (10cm).

Supplies: tapestry needle, stitch markers

Special Abbreviations

This is a list of the special abbreviations. Please refer to [Crochet Abbreviations Master List by the Craft Yarn Council](#)

BO – bobble
ch – chain
ch-sp – chain space
ch1-sp – chain 1 space
ch2-sp – chain 2 space
dc – double crochet
Rnd – round
sc – single crochet
sl st – slip stitch
st (sts) – stitch (stitches)
yo – yarn over

Sample was made with Berroco Vintage Baby in colors:
MC #10072 Toast,
CC1 #10037 Myrtle, and
CC2 #10023 Orange.

Special Stitches

Bobble (BO) - Yo, insert hook into st and pull up a loop, yo and pull through 2 loops, repeat this 4 more times, a total of 6 loops on hook, yo and pull through all 6 loops.

Standing Double Crochet (standing dc) - Place a slip knot on hook and yo, using finger to hold yo on hook, insert hook into the st or sp as instructed and pull up a loop, yo and pull through 2 loops, yo and pull through last 2 loops.

Notes

Instructions within parentheses () indicates that everything within is worked into the same st or sp.

Instructions within brackets [] indicates that everything within should be repeated the listed amount of times.

Instructions within asterisks * * indicates that everything within should be repeated the listed amount of times

(continued on next page...)

Pattern Instructions

With MC make a Magic Ring.

With MC – Moss Stitch in the Round:

Rnd 1 (WS): Ch 1, *sc 1, ch 1, sc 1, ch 2, repeat from * three more times, sl st to first sc, close magic ring, ch 1 and turn.

Rnd 2 (RS): *(Sc 1, ch 2, sc 1, ch 1) all in corner, sk 1, sc 1 in ch1-sp, ch 1, repeat from * three more times, sl st to first sc, ch 1 and turn.

Rnd 3 (WS): *[Sc 1 in ch1-sp, ch 1, sk 1] repeat to corner, (sc 1, ch 2, sc 1, ch 1) all in corner repeat from * three more times, sl st to first sc, fasten off and turn. (16 sc)

With C1 – V-Stitch into ch1-sps:

Rnd 4 (RS): (Standing dc, ch 1, [dc 1, ch 1] two times, dc 1) all in any corner, *sk 1 ch-sp, (dc 1, ch 1, dc 1) all in the next ch-sp, sk next ch-sp, ([dc 1, ch 1] three times, dc 1) all in corner, repeat from * two more times, sk 1 ch-sp, (dc 1, ch 1, dc 1) all in the next ch-sp, sl st to the first dc, fasten off, DO NOT turn. (24 dc)

With C2 – Tulips with Bobbles:

Rnd 5 (RS): Work 1 BO in the ch1-sp of any V-Stitch, ch 2, *1 BO in the next ch1-sp, ch 2, repeat from * to end of round, sl st to the top of the BO, fasten off, DO NOT turn. (16 BO)

With MC – Moss Stitch in the Round:

Rnd 6 (RS): (Sc 1, ch 1, sc 1, ch 1) all in the ch2-sp to the left of any corner BO, (sc 1, ch 1, sc 1, ch 1) all in the next ch2-sp - repeat two more times, ch 2, *(sc 1, ch 1, sc 1, ch 1) all in the next ch2-sp - repeat three more times, ch 2, repeat from * two more times, sl st to the first sc, ch 1 and turn. (32 sc)

Rnd 7 (WS): (Sc 1, ch 2, sc 1, ch 1) all in the corner, *(sk 1, sc 1, ch 1) in the next ch1-sp, repeat from * to end of round while working (sc 1, ch 2, sc 1, ch 1) in each corner, sl st to first sc, ch 1 and turn.

Rnd 8 (RS): *(Sc 1, ch 1, sk 1) all in the first ch1-sp, repeat from * to end of round while working (sc 1, ch 2, sc 1, ch 1) in each corner, sl st to the first sc, fasten off, DO NOT turn. (40 sc)

With C1 – V-Stitch into ch1-sps:

Rnd 9 (RS): (Standing dc, ch 1, [dc 1, ch 1] two times, dc 1) all in any corner, sk 1 ch-sp, *(dc 1, ch 1, dc 1) all in the next ch-sp, sk 1 ch-sp, repeat from * to end of round while working ([dc 1, ch 1] three times, dc 1) in each corner, sl st to the first dc, fasten off, DO NOT turn. (48 dc)

With C2 – Tulips with Bobbles:

Rnd 10 (RS): Repeat Rnd 5. (28 BO)

(continued on next page...)

With MC – Moss Stitch in the Round:

Rnd 11 (RS): (Sc 1, ch 1, sc 1, ch 1) all in the ch2-sp to the left of any corner BO, (sc 1, ch 1, sc 1, ch 1) all in the next ch2-sp - repeat five more times, ch 2, *(sc 1, ch 1, sc 1, ch 1) all in the next ch2-sp - repeat six more times, ch 2, repeat from * two more times, sl st to the first sc, ch 1 and turn. (56 sc)

Rnd 12 (WS): Repeat Rnd 7.

Rnd 13 (RS): Repeat Rnd 8. (64 sc)

With C1 – V-Stitch into ch1-sp:

Rnd 14 (RS): Repeat Rnd 9. (72 dc)

With C2 – Tulips with Bobbles:

Rnd 15 (RS): Repeat Rnd 5. (40 BO)

With MC – Moss stitch in the Rnd:

Rnd 16 (RS): (Sc 1, ch 1, sc 1, ch 1) all in the ch2-sp to the left of any corner BO, (sc 1, ch 1, sc 1, ch 1) all in the next ch2-sp - repeat eight more times, ch 2, *(sc 1, ch 1, sc 1, ch 1) all in the next ch2-sp - repeat nine more times, ch 2, repeat from * two more times, sl st to the first sc, ch 1 and turn. (82 sc)

Rnd 17 (WS): Repeat Rnd 7.

Rnd 18 (RS): Repeat Rnd 8, ch 1 and turn, do not fasten off. (88 sc at the end of this Rnd.)

Finishing

Border Rnd (WS): Sc around entire square by working sc in each ch1-sp and in the top of each sc to end of round and while working (sc 1, ch 2, sc 1) in each corner, sl st to the first sc. (178 sc)

Cut yarn and fasten off.

Weave in ends and block to 10" x 10" square. Enjoy!



Crochet Blanket Square



Yarn Dragon

**Designed by
Karen Berner**

Blanket Square Size: 10" x 10"
(25.4 x 25.4 cm)

Yarn: any DK, light worsted weight, or equivalent yarn (i.e. fingering weight held double) that makes gauge.

Recommended Hook: US H (5 mm) or size needed to achieve gauge.

Gauge: 19 sts and 18 rows over 4" (10cm) in pattern.

Supplies: tapestry needle, stitch markers

Special Abbreviations

This is a list of the special abbreviations. Please refer to [Crochet Abbreviations Master List by the Craft Yarn Council](#)

- ch – chain
- dc – double crochet
- psc – picot single crochet
- sc – single crochet
- st (sts) – stitch (stitches)
- sl st – slip stitch

Sample was made with Yarn Dragon Retro DK in Color: Capitol Hill.

Special Stitches

Picot Single Crochet (psc) - Insert your hook into the next stitch, yarn over and draw up a loop, holding back the first loop on your hook, chain three in the second loop on your hook, yarn over and draw through the two loops on your hook.

Notes

Slip Stitch from previous row will not count as a stitch to be worked into. Each row will end with 40 stitches.

Pattern Instructions

Ch 41.

Row 1: Sc in 2nd ch from hook and in each ch across. Ch1, turn.

Row 2 – 4: Sc in the first st and in each st across. Ch 1, turn.

Row 5 – 6: Sc 4, (dc, sc) 16 times, sc 4. Ch 1, turn.

Row 7: Sc 4, (dc, sc) 5 times, (psc, sc) 6 times, (dc, sc) 5 times, sc 4. Ch 1, turn.

Row 8: Sc 4, (dc, sc) 5 times, sc 12, (dc, sc) 5 times, sc 4. Ch 1, turn.

(continued on next page...)

Row 9: Sc 4, (dc, sc) 3 times, (sc, psc) 9 times, sl st into the last completed st, (dc, sc) 4 times, sc 4. Ch 1, turn.

Row 10: Sc 4, (dc, sc) 4 times, sc 18, (dc, sc) 3 times, sc 4. Ch 1, turn.

Row 11: Sc 4, (dc, sc) 3 times, (psc, sc) 10 times, (dc, sc) 3 times, sc 4. Ch 1, turn.

Row 12: Sc 4, (dc, sc) 3 times, sc 20, (dc, sc) 3 times, sc 4. Ch 1, turn.

Row 13: Sc 4, (dc, sc) 2 times, (sc, psc) 11 times, sl st into the last completed st, (dc, sc) 3 times, sc 4. Ch 1, turn.

Row 14: Sc 4, (dc, sc) 3 times, sc 22, (dc, sc) 2 times, sc 4. Ch 1, turn.

Row 15: Sc 4, (dc, sc) 2 times, (psc, sc) 12 times, (dc, sc) 2 times, sc 4. Ch 1, turn.

Row 16: Sc 4, (dc, sc) 2 times, sc 24, (dc, sc) 2 times, sc 4. Ch 1, turn.

Row 17: Sc 4, dc, sc, (sc, psc) 13 times, sl st into the last completed st, (dc, sc) 2 times, sc 4. Ch 1, turn.

Row 18: Sc 4, (dc, sc) 2 times, sc 26, dc, sc 5. Ch 1, turn.

Row 19: Sc 4, dc, sc, (psc, sc) 14 times, dc, sc 5. Ch 1, turn.

Row 20: Sc 4, dc, sc 29, dc, sc 5. Ch 1, turn.

Row 21: Sc 4, dc, sc, (sc, psc) 14 times, sl st into the last completed st, dc, sc 5. Ch 1, turn.

Row 22: Sc 4, dc, sc 29, dc, sc 5. Ch 1, turn.

Row 23 – 24: Repeat Rows 19 and 20.

Row 25 – 26: Repeat Rows 21 and 22.

Row 27 – 28: Repeat Rows 19 and 20.

Row 29 – 30: Repeat Rows 17 and 18.

Row 31 – 32: Repeat Rows 15 and 16.

Row 33 – 34: Repeat Rows 13 and 14.

Row 35 – 36: Repeat Rows 11 and 12.

Row 37 – 38: Repeat Rows 9 and 10.

Row 39 – 40: Repeat Rows 7 and 8.

Row 41 – 42: Repeat Rows 5 and 6.

Row 43 – 45: Repeat Rows 2 – 4.

Row 46: Sc in the first st and in each st across.

Cut yarn and fasten off.

Weave in ends and block to 10" x 10" square. Enjoy!

NOTES

PUGET SOUND LYS TOUR 2026



May 13 – 17, 2026

www.LYSTOUR.com