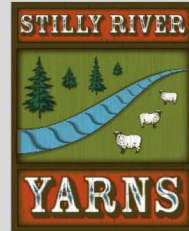




Knit Blanket Square



Stilly River Yarns

Designed by
Sarah Dobbins

Blanket Square Size: 10" x 10"
(25.4 x 25.4 cm)

Yarn: any DK, light worsted weight, or equivalent yarn (i.e. fingering weight held double) that makes gauge.

Recommended Needle: US 6 (4 mm) or size needed to achieve gauge.

Gauge: 20 sts and 26 rows over 4" (10cm) in Garter Stitch Blocked.

Supplies: tapestry needle, stitch markers

Special Abbreviations

This is a list of the special abbreviations. Please refer to [Knitting Abbreviations Master List by the Craft Yarn Council](#)

2/2 LC – 2 over 2 left cross cable

2/2 RC – 2 over 2 right cross cable

k – knit

RS – Right Side

sl1 wyif – slip 1 st with yarn in front

st (sts) – stitch (stitches)

WS – Wrong Side

Sample was made Cascade 220 Superwash.

Special Stitches

2 over 2 left cross cable (2/2 LC) – Slip next 2 stitches to cable needle and place at front of work, k2, then k2 from cable needle.

2 over 2 right cross cable (2/2 RC) – Slip next 2 stitches to cable needle and place at back of work, k2, then k2 from cable needle.

Notes

Instructions within parentheses () should be repeated as many times as indicated.

Pattern Instructions

Cast on 60 stitches using long-tail or preferred cast on method.
Knit 4 rows.

(continued on next page...)

Row 5: K4, p3, (k12, p2, k1, p2) two times, k12, p3, k4.

Row 6: K7, (p12, k2, sl1 wyif, k2) two times, p12, k7.

Row 7: Repeat Row 5.

Row 8: Repeat Row 6.

Row 9: K4, p3 (k2, 2/2 RC, 2/2 LC, k2, p2, k1, p2) two times,
k2, 2/2 RC, 2/2 LC, k2, p3, k4.

Row 10: Repeat Row 6.

Row 11: K4, p3, (2/2 RC, k4, 2/2 LC, p2, k1, p2) two times,
2/2 RC, k4, 2/2 LC, p3, k4.

Row 12: Repeat Row 6.

Row 13: K4, p3, (k2, 2/2 RC, 2/2 LC, k2, p2, k1, p2) two times, k2, 2/2 RC, 2/2 LC, k2, p3, k4.

Row 14: Repeat Row 6.

Row 15: K4, p3, (2/2 RC, k4, 2/2 LC, p2, k1, p2) two times, 2/2 RC, k4, 2/2 LC, p3, k4.

Row 16: Repeat Row 6.

Row 17: K4, p3 (2/2 LC, k4, 2/2 RC, p2, k1, p2) two times, 2/2 LC, k4, 2/2 RC, p3, k4.

Row 18: Repeat Row 6.

Row 19: K4, p3, (k2, 2/2 LC, 2/2 RC, k2, p2, k1, p2) two times, k2, 2/2 LC, 2/2 RC, k2, p3, k4.

Row 20: Repeat Row 6.

Repeat Rows 9 – 20 three more times.

Repeat Rows 5 – 6 one more time.

Repeat Row 5 once more.

Knit 4 rows.

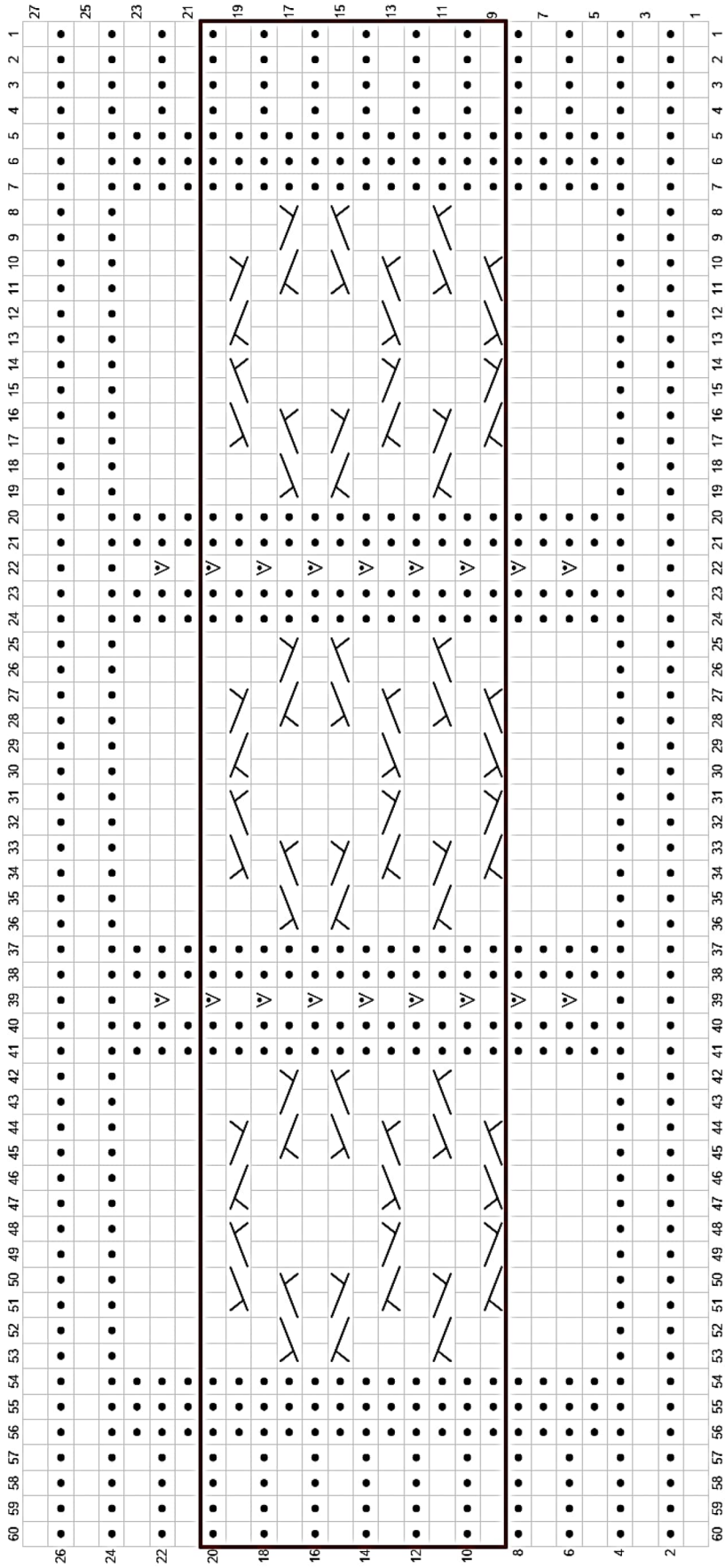
Bind off all stitches loosely.

Weave in ends and block to 10" x 10" square. Enjoy!

Special Stitches

2 over 2 left cross cable (2/2 LC) –
Slip next 2 sts to cable needle and hold
to front, k2, then k2 from cable needle.

2 over 2 right cross cable (2/2 RC) –
Slip next 2 sts to cable needle and hold
to back, k2, then k2 from cable needle.



RS: Knit
 WS: Purl
 RS: Purl
 WS: Knit
 RS: Knit
 WS: Slip 1 stitch purlwise with yarn in front
 2/2 LC
 2/2 RC