



# Knit Blanket Square



NORTHWEST  
YARNS & MERCANTILE

Northwest Yarns & Mercantile

Designed by  
Heather Seevers

**Blanket Square Size:** 10" x 10"  
(25.4 x 25.4 cm)

**Yarn:** any DK, light worsted weight, or equivalent yarn (i.e. fingering weight held double) that makes gauge.

**Recommended Needle:** US 6 (4 mm) or size needed to achieve gauge.

**Gauge:** 20 sts and 28 rows over 4" (10cm) in pattern, worked flat.

**Supplies:** tapestry needle, stitch markers

## Special Abbreviations

This is a list of the special abbreviations. Please refer to [Knitting Abbreviations Master List by the Craft Yarn Council](#)

k – knit

p – purl

RS – Right Side

st (sts) – stitch (stitches)

WS – Wrong Side

Sample was made with Queensland Collection Tenderfoot held double throughout.

## Pattern Instructions

With MC, cast on 51 stitches using the German twisted cast on.

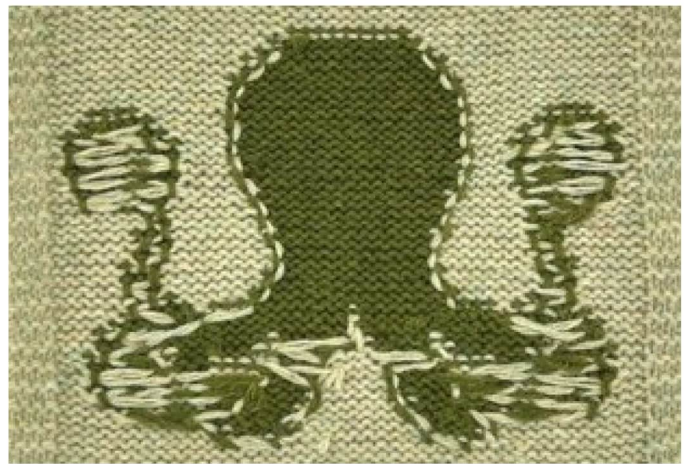
Work Rows 1 - 61 of Chart on Page 2.

### Notes:

*After Row 10, your work should measure at least 1.75" from cast on edge. If you are short, repeat Rows 10 and 11 to the recommended length before moving to Row 12.*

*Use preferred colorwork management for colorwork.*

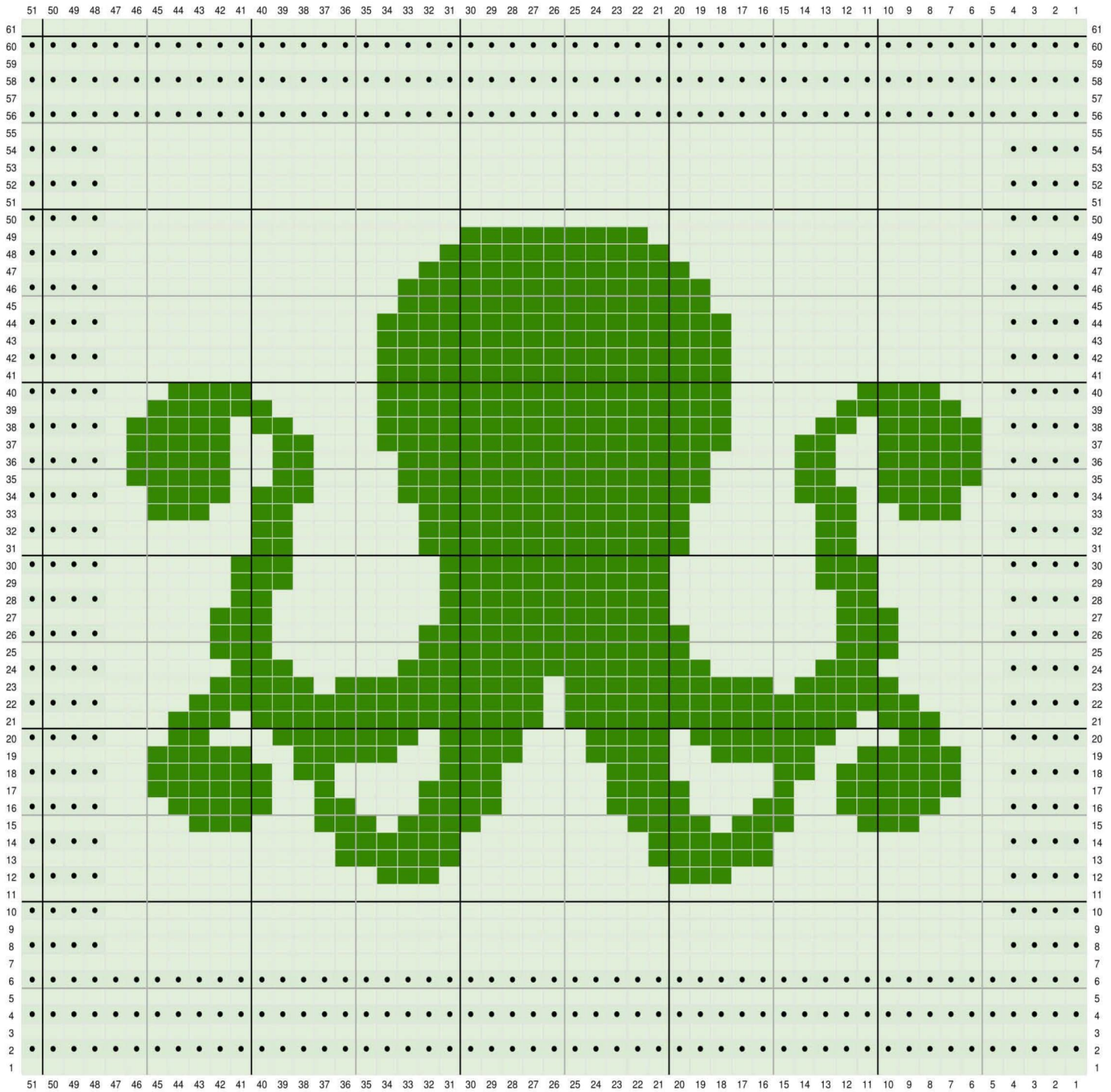
*Sample combines both intarsia and stranded colorwork:*



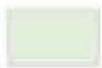
*After Row 55, your work should measure at least 9" from cast on edge. If you are short, repeat Rows 54 and 55 to the recommended length before moving to Row 56.*

Bind off all stitches.

Weave in ends and block to 10" x 10" square. Enjoy!



Contrast Color - RS Knit / WS Purl



Main Color - RS Knit / WS Purl



Main Color - WS Knit