



Puget Sound LYS Tour 20th Anniversary Knit Squares Bundle



20 Years of Stitching Together

20TH ANNIVERSARY BLANKET SQUARES BUNDLE

The Puget Sound Local Yarn Shop (LYS) Tour is proud to celebrate its 20th Anniversary with the release of the *20th Anniversary Blanket Squares Bundle*, a commemorative digital collection featuring exclusive knit and crochet blanket square patterns designed in collaboration with this year's participating shops.

Since its founding in 2006, the Puget Sound LYS Tour has brought fiber enthusiasts together to explore independently owned yarn shops across the Puget Sound region. The annual self-guided tour encourages makers to discover new shops, build community, and support local small businesses. We hope the bonus cumulative shop blanket patterns add to the joy of participating and expresses the gratefulness of all the shops to our participating yarn tourists.

The Blanket Square patterns are an extra bonus for this special 20th Anniversary year, along with the traditional release of featured crochet and knitting patterns at each Shop during the event. The Blanket Square patterns will be published digitally before the Tour to help participants warm up their needles and hooks until the Tour dates, May 13 - 17, 2026.

How to Participate:

Blanket Square Knit and Crochet patterns are revealed with each shop spotlight on social media, starting Feb 27, 2026 and posted on the LYS Tour official website www.LYSTour.com as downloadable pattern files.

This eBook bundles together the 25 Knits Blanket Squares from all the participating shops. The 25 Crochet Blanket Squares are bundled in a separate eBook. Enjoy them both!

Whether participants choose to knit or crochet a single square as a souvenir of their favorite shops or complete both anniversary blankets, the bundle offers a meaningful way to celebrate the Tour's 20th milestone year.

The 2026 Blanket Square Patterns include:

- * Exclusive knit and crochet blanket square patterns from each participating shop (*that's 25 knit squares and 25 crochet squares!*)
- * 10" x 10" knit or crochet square pattern using DK, light worsted, or equivalent yarn
- * A collaborative blanket designed to reflect 20 years of stitching together for the LYS Tour
- * Digital downloads for convenient access and participation
- * The flexibility to knit, or crochet, mix-and-match, or make both!

We can't wait to see what everyone does with their squares!

Share your progress on social media to connect with fellow participants:

#PugetSoundLYSTour #LYSTourBlanketSquares #LYSTour20years #LYSTour2026

Table of Contents

Materials.....	4
Gauge.....	4
Borders.....	4
Blocking.....	4
Finishing.....	4
Horizontal Seaming.....	5
Vertical Seaming.....	5
Abbreviations	6
Shop Patterns	7
Acorn Street Shop	7
All Wound Up Yarn Shop	8
Apple Yarns.....	11
B Town Yarn.....	13
Bazaar Girls Yarn Shop.....	14
Fidalgo Artisan Yarn & Clothing.....	15
Great Yarns	16
Hazel Knits.....	19
Heart2Heart Knitting & Fiber Arts	22
Makers' Mercantile	23
Needles & Hooks	28
Northwest Yarns & Mercantile	31
Quintessential Knits.....	33
Sea Bre's Yarn	34
Seattle Yarn.....	35
Stilly River Yarns	36
Stranded by the Sea.....	39
Strikke Yarn & Supply.....	41
The Knitters Studio.....	42
The New Knittery.....	44
The Nifty Knitter	46
The Tea Cozy.....	47
The Yarn Outfitter	48
WildFibers.....	50
Yarn Dragon.....	52

Materials

Yarn: any DK, light worsted weight, or equivalent yarn (i.e. fingering weight held double) that makes gauge.

Needle: Most blocks were knit using US 6 (4 mm) 24" circular needles.

Using a circular needle will allow the fabric to relax and spread out over the cable, making it easier to see and measure. Straight needles are an option, but the stitches may be crowded on the needle.

Some blocks have colorwork or cables and may require going up one or more needle sizes to achieve gauge.

Supplies: tapestry needle, stitch markers, cable needle, locking markers or pins for seaming.

Stitch markers will be helpful if placed before and after selvedge edge stitch, between stitch pattern repeats or other sections of stitches. This also allows you to isolate each repeat and serves as a double-check as you work the pattern.

Gauge

Each shop's pattern will state a recommended gauge, number of stitches and rows per inch, which helps to ensure the dimensions of the pattern are achieved.

Most stockinette based patterns will work up at 20 stitches over 4" and lace patterns will be more spread out, while cables and colorwork may be denser, as a result you may need to adjust your needle size. A larger needle will yield fewer stitches per inch and a smaller needle will yield more stitches per inch.

The end goal is for the square to be 10" x 10" after blocking. It's better if your square turns out a little smaller rather than a little bigger, as it is easier to block/stretch bigger to match the other squares when joining.

Borders

Each knit square will be framed on all four sides with a garter stitch border. The bottom and top borders are made up of rows of knitting, and the beginning and end of each row are knit to create a garter stitch side border. The border frames the center stitch design of each square and provides a nice edge for easily seaming the squares together.

Blocking

Blocking will give each square a smooth, professional finish, even edges, and equal dimensions.

Block your finished squares to 10" x 10" using steam or water. If your square is a little smaller, stretch it to match the size of the other squares. Pin each square to size and shape and allow to dry fully before removing the pins.

Finishing

Knitted squares may be seamed and combined into an afghan, lap blanket, pillow, tote bag, or whatever you envision. The arrangement possibilities are endless.

If you have made all 25 Shop's squares, you will have 5 squares wide X 5 squares high.

Place the squares on a large surface and arrange them in a pleasing layout and seam together.

There are many methods of seaming possible.

See instruction below for an invisible seam.

Squares are joined in horizontal seams by grafting the bind off edge of one square to the cast on edge of another square, one after another, to make vertical strips. Vertical seams join the strips seaming the garter stitch "bumps" along the left and right selvedge edges together. The result is a flat and nearly invisible seam.

Horizontal Seaming

Step 1: With the right sides facing you, lay pieces to be joined one above another, aligning corners and center points, then use pins to distribute the extra stitches from the larger square evenly across the smaller square.

Step 2: Measure yarn at least 3 times the width of the square, plus a little extra for insurance, and thread through a blunt tip tapestry needle and graft squares to create a horizontal invisible seam.

TIP: For as invisible a seam as possible, use the same color yarn as one of the squares.

Step 3: Thread needle under both legs of the first V found between the first set of garter ridges on one square (inside the cast on / bind off edge) and pull the yarn through.

Step 4: Thread needle under both legs of the corresponding V stitch of second square and pull yarn through.

Step 5: Thread needle under both legs of the V stitch immediately adjacent to your stitch on the first square (starting in the same place your stitch came out of on the first square) and pull the yarn through.

Step 6: Thread needle under both legs of the corresponding V stitch on second square (again starting in the same place your stitch came out of on the second square) and pull yarn through.

When grafting the horizontal seam between squares of different stitch counts, occasionally capture two stitches on the larger square for every stitch on the smaller square to ease in the difference.

TIP: Ensure your sewing tension matches the row of stitches so that the seam retains elasticity.

Repeat Steps 5 - 6 until the seam is complete.

Fasten off and weave loose ends on the back of your work.

Repeat this horizontal seam with additional squares to complete a vertical strip.

Continue in this manner until all squares have been joined in vertical strips.

Vertical Seaming

Step 1: With right sides facing up, lay vertical strips side by side, aligning corners and the horizontal seams between squares as center points to align rows, then use pins to distribute the extra rows from the larger squares evenly across the smaller squares.

Step 2: Measure yarn about one-and-a-half the length of the vertical strip to ensure a little extra for insurance, and thread through a blunt tip tapestry needle and seam vertical strips together edge-to-edge.

Step 3: Thread needle under first edge of the top loop of garter bump of first strip and pull the yarn through.

Step 4: Thread needle under corresponding bottom loop of garter bump of opposite strip & pull yarn through.

Step 5: Repeat steps 3 and 4, consistently using the top loops of one strip and bottom loops of the other. When sewing the vertical seam between squares of different row counts, occasionally capture two garter bump loops on the larger squares for every garter bump loop on the smaller square to ease in the difference.

Step 6: Pull yarn snugly every inch or so to bring the seams neatly together, while ensuring your seam retains some elasticity. Pulling too tightly may cause the fabric to pucker or cinch.

Repeat Steps 3 - 6 until the seam is complete.

Fasten off and weave loose ends on the back of your work.

Abbreviations

1/2 RCM	1 over 2 right cross cable modified
2/1 LPC	2 over 1 left purl cross cable
2/1 RPC	2 over 1 right purl cross cable
2/2 LC	2 over 2 left cross cable
2/2 RC	2 over 2 right cross cable
2x	repeat two times
3/3 LPC	3 over 3 left purl cross cable
3/3 PLC	3 over 3 purl left cross cable
3/3 PRC	3 over 3 purl right cross cable
3x	repeat three times
C4B	Cable 4 Back
C4F	Cable 4 Front
cn	cable needle
EOR	End of Row
k	knit
k2tog	knit two stitches together
k3tog	knit three together
kdw	knit with double wrap
kfb	knit front and back
P	purl
p2tog	purl two together
p3tog	purl three together
pm	place marker
pssso	pass slipped stitch over
RS	Right Side
s1wyib	slip 1 stitch with yarn in back
s1wyif	slip 1 stitch with yarn in front
sk2p	Slip 1 stitch knitwise, knit 2 stitches together, pass slipped stitch over
sl	slip stitch
sl1	slip 1 stitch purlwise
sl1 wyib	slip one stitch with yarn in back
Sl1 wyif	slip one stitch with yarn in front
sm	slip marker
ssk	slip slip knit
st (sts)	stitch (stitches)
T4B	Twist 4 Back
T4F	Twist 4 Front
w&t	wrap and turn
WS	Wrong Side
x2 (x#)	repeat two (or number) times
yo	yarn over

For a full list, please refer to
[Knitting Abbreviations Master List](#)
[by the Craft Yarn Council](#)

tinyurl.com/cycknitabbreviations

or scan the QR code





Knit Blanket Square



Acorn Street Shop

Designed by
Mary Rourke

Blanket Square Size: 10" x 10"
(25.4 x 25.4 cm)

Yarn: any DK, light worsted weight, or equivalent yarn (i.e. fingering weight held double) that makes gauge.

Recommended Needle: US 6 (4 mm) or size needed to achieve gauge.

Gauge: 20 sts and 32 rows over 4" (10cm) in pattern.

Supplies: tapestry needle, stitch markers

Special Abbreviations

This is a list of the special abbreviations. Please refer to [Knitting Abbreviations Master List by the Craft Yarn Council](#)

k – knit

p – purl

RS – Right Side

sk2p – Slip 1 stitch knitwise, knit 2 stitches together, pass slipped stitch over

sm – slip marker

st (sts) – stitch (stitches)

WS – Wrong Side

yo – yarn over

Sample was made with Berroco Pima Soft (100% Pima Cotton) in color #4631 – Shortbread.

Pattern Instructions

Cast on 47 stitches with long tail or preferred cast on method.

Knit 8 rows. On last row place marker after the first 4 sts and another before the last 4 sts to mark the garter stitch border sts.

Row 1 (RS): K4, sm, k3, (p3, k3) 6 times, sm, k4.

Row 2 (WS): K4, sm, p3, (k3, p3) 6 times, sm, k4.

Row 3: K4, sm, k3, (p3, k3) 6 times, sm, k4.

Row 4: K4, sm, p3, (k3, p3) 6 times, sm, k4.

Row 5: K4, sm, yo, sk2p, yo, (k3, yo, sk2p, yo) 6 times, sm, k4.

Row 6: K4, sm, k3, (p3, k3) 6 times, sm, k4.

Row 7: K4, sm, p3, (k3, p3) 6 times, sm, k4.

Row 8: K4, sm, k3, (p3, k3) 6 times, sm, k4.

Row 9: K4, sm, p3, (k3, p3) 6 times, sm, k4.

Row 10: K4, sm, k3, (p3, k3) 6 times, sm, k4.

Row 11: K4, sm, k3, (yo, sk2p, yo, k3) 6 times, sm, k4.

Row 12: K4, sm, p3, (k3, p3) 6 times, sm, k4.

Repeat Rows 1 - 12 four more times, then repeat Rows 1 - 4 once more.

Knit 8 rows.

Bind off all stitches.

Weave in ends and block to 10" x 10" square. Enjoy!



Knit Blanket Square



All Wound Up

**Designed by
Allison Harding, Fleebers**

Blanket Square Size: 10" x10"
(25.4 x 25.4 cm)

Yarn: any DK, light worsted weight, or equivalent yarn (i.e. fingering weight held double) that makes gauge.

Recommended Needle: US 6 (4 mm) or size needed to achieve gauge.

Gauge: 20 sts and 26 rows over 4" (10cm) in Garter Stitch Blocked.

Supplies: tapestry needle, stitch markers

Special Abbreviations

This is a list of the special abbreviations. Please refer to [Knitting Abbreviations Master List by the Craft Yarn Council](#)

k – knit

kdw - knit with double wrap

pm – place marker

RS – Right Side

sl1 wyib – slip one stitch with yarn in back

Sl1 wyif – slip one stitch with yarn in front

sm – slip marker

st (sts) – stitch (stitches)

WS – Wrong Side

Sample was made with Polka Dot Sheep Stumptown DK in
Color 1: Dusty Road
Color 2: Aubergine

Special Instructions

kdw - knit with double wrap: Insert RH needle into stitch on LH needle knitwise, wrap yarn twice and pull through, leaving double stitch on RH needle, double wraps count as 1 st.

Double wrapped stitches create an elongated stitch. When first slipping the double wrapped stitch on the next row, drop one loop so it becomes a long, single stitch. The stitch count doesn't change.

Notes

There are no purls used in this design. Only one color is used per row. Do not break yarn when changing colors, simply carry up the edge, bring the new yarn up under the old yarn. Chart on Page 3.

Pattern Instructions

Border and Set-up - With Color 1:

Cast on 51 stitches using long-tail or preferred cast on method.
Knit 7 rows.

Row 8 (Set-up): K4, pm, (kdw, k5) repeat to last 5 sts, kdw, pm, k4. (51 stitches, double wraps count as 1 st)

Drop Color 1 and begin Color 2, carrying yarns up the edge.

(continued on next page...)

MAIN BODY

With Color 2:

Row 9 (RS): K4, sm, [sl1 wyib (dropping extra loop), k5] repeat to last 5 sts, sl1 wyib (dropping extra loop), sm, K4.
(51 stitches)

Row 10 (WS): K4, sm, (sl1 wyif, k5) repeat to last 5 sts, sl1 wyif, sm, k4.

Row 11: K4, sm, (sl1 wyib, k5) repeat to last 5 sts, sl1 wyib, sm, k4.

Row 12: K4, sm, (sl1 wyif, k5) repeat to last 5 sts, sl1 wyif, sm, k4.

Row 13: K4, sm, (sl1 wyib, k5) repeat to last 5 sts, sl1 wyib, sm, k4.

Row 14: K4, sm, (sl1 wyif, k2, kdw, k2) repeat to last 5 sts, sl1 wyif, sm, k4.

Drop Color 2 and pick up Color 1.

With Color 1:

Row 15 (RS): K4, sm, k3, [sl1 wyib (dropping extra loop), k5] repeat to last 8 sts, sl1 wyib (dropping extra loop), k3, sm, k4. (51 stitches)

Row 16 (WS): K4, sm, k3, (sl1 wyif, k5) repeat to last 8 sts, sl1 wyib, k3, sm, k4.

Row 17: K4, sm, k3, (sl1 wyib, k5) repeat to last 8 sts, sl1 wyif, k3, sm, k4.

Row 18: K4, sm, k3, (sl1 wyif, k5) repeat to last 8 sts, sl1 wyib, k3, sm, k4.

Row 19: K4, sm, k3, (sl1 wyib, k5) repeat to last 8 sts, sl1 wyif, k3, sm, k4.

Row 20: K4, sm, (kdw, k2, sl1 wyif, k2) repeat to last 5 sts, kdw, sm, k4.

Drop Color 1 and pick up Color 2.

Rows 21 - 80: Repeat Rows 9 - 20 five more times.

With Color 2:

Row 81 (RS): K4, sm, [sl1 wyib (dropping extra loop), k5] repeat to last 5 sts, sl1 wyib (dropping extra loop), sm, K4.
(51 stitches)

Row 82 (WS): K4, sm, (sl1 wyif, k5) repeat to last 5 sts, sl1 wyif, sm, k4.

Row 83: K4, sm, (sl1 wyib, k5) repeat to last 5 sts, sl1 wyib, sm, k4.

Row 84: K4, sm, (sl1 wyif, k5) repeat to last 5 sts, sl1 wyif, sm, k4..

Row 85: K4, sm, (sl1 wyib, k5) repeat to last 5 sts, sl1 wyib, sm, k4.

Row 86: K4, sm, (sl1 wyif, k5) repeat to last 5 sts, sl1 wyif, sm, k4.

Drop Color 2 and pick up Color 1.

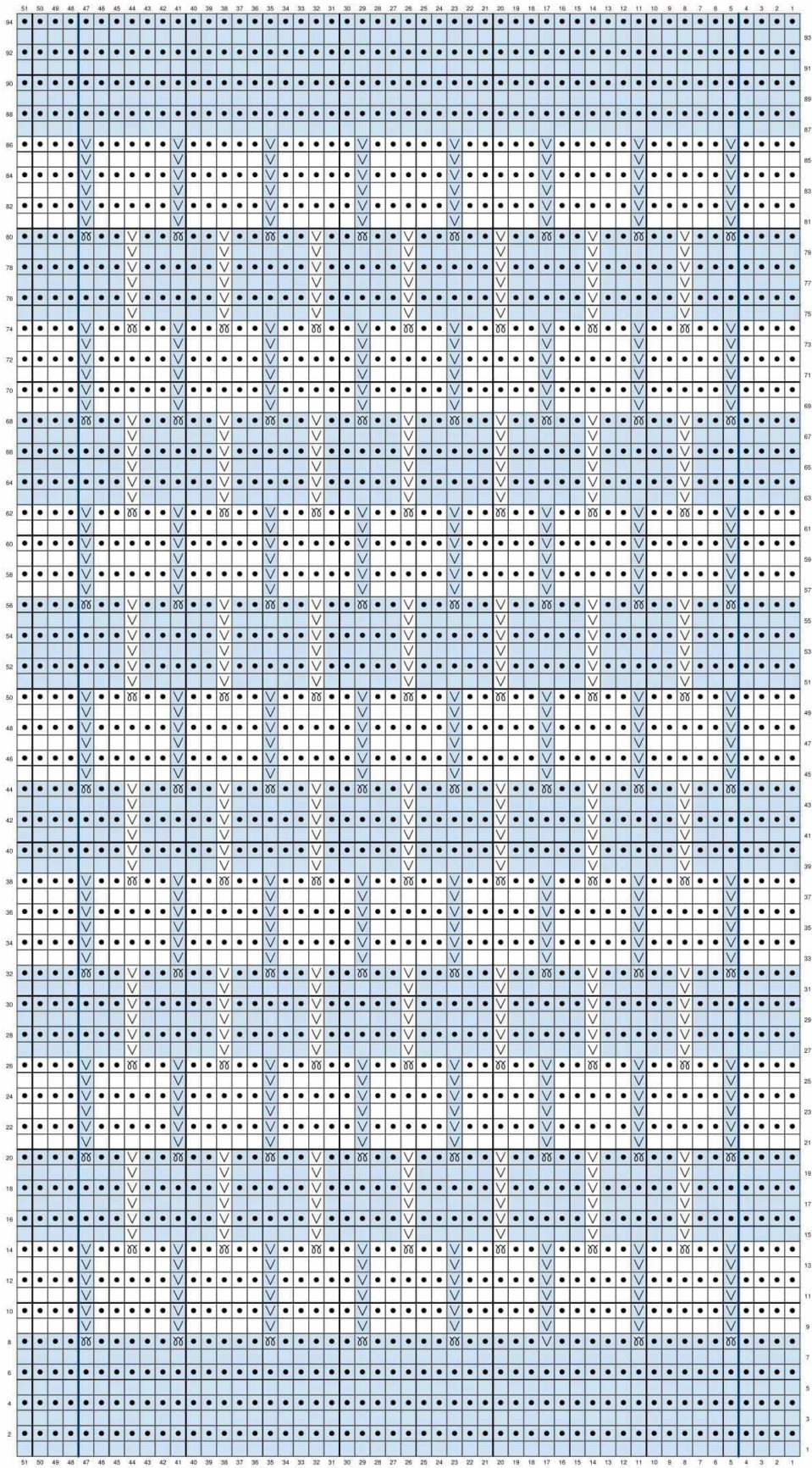
Finishing Border - With Color 1:

Row 87: Knit to end, removing all markers. (51 stitches)

Knit 7 rows.

Bind off all stitches.

Weave in ends and block to 10" x 10" square. Enjoy!



-  RS: Knit
WS: Purl
-  RS: Knit
WS: purl
-  RS: purl
WS: Knit
-  RS: Purl
WS: Knit
-  RS: Slip 1 stitch with yarn at back
WS: Slip 1 stitch with yarn in front
-  RS: Slip 1 stitch with yarn at back
WS: Slip 1 stitch purlwise with yarn in front
-  RS: insert as to purl wrap yarn twice around RH needle, pull through.
WS: insert as to purl wrap yarn twice around RH needle, pull through.
Drop extra wrap on next row to create elongated stitch
-  RS: insert as to purl wrap yarn twice around RH needle, pull through.
WS: insert as to purl wrap yarn twice around RH needle, pull through.
Drop extra wrap on next row to create elongated stitch
-  RS: border marker
WS: border marker



Knit Blanket Square



Apple Yarns

Designed by
Andrea Evans

Blanket Square Size: 10" x 10"
(25.4 x 25.4 cm)

Yarn: any DK, light worsted weight, or equivalent yarn (i.e. fingering weight held double) that makes gauge.

Recommended Needle: US 6 (4 mm) or size needed to achieve gauge.

Gauge: 20 sts and 26 rows over 4" (10cm) in Garter Stitch Blocked.

Supplies: cable needle, tapestry needle, stitch markers

Special Abbreviations

This is a list of the special abbreviations. Please refer to [Knitting Abbreviations Master List by the Craft Yarn Council](#)

C4B – Cable 4 Back

C4F – Cable 4 Front

k – knit

RS – Right Side

st (sts) – stitch (stitches)

WS – Wrong Side

Sample was made with Vintage DK.

Special Stitches

Cable 4 Back (C4B) – Slip next 2 sts to cable needle and hold to back, k2 from left needle, k2 from cable needle.

Cable 4 Front (C4F) – Slip next 2 sts to cable needle and hold to front, k2 from left needle, k2 from cable needle.

Pattern Instructions

Cast on 56 stitches using long-tail or preferred cast on method.
Knit 7 rows.

Row 1 (RS): Knit to end of row.

Rows 2 and all WS Rows (WS): K4, p to last 4 sts, k4.

Row 3 (RS): K4, *k2, C4B, repeat from * to last 4 sts, k4.

Row 5 (RS): Repeat Row 1.

Row 7 (RS): K4, *C4F, k4, repeat from * to last 4 sts, k4.

Chart of Rows 1 – 8 provided on Page 2.

Repeat Rows 1 - 8 until square measures 9" from cast on, ending after WS Row.

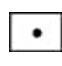
Knit 7 rows.

Bind off all stitches.

Weave in ends and block to 10" x 10" square. Enjoy!

	14	13	12	11	10	9	8	7	6	5	4	3	2	1	
8	•	•	•	•							•	•	•	•	
															7
6	•	•	•	•							•	•	•	•	
															5
4	•	•	•	•							•	•	•	•	
															3
2	•	•	•	•							•	•	•	•	
															1

 RS: Knit
WS: Purl

 RS: Purl
WS: Knit



Cable 4 Back (C4B) – Slip next 2 sts to cable needle and hold to back, k2 from left needle, k2 from cable needle.



Cable 4 Front (C4F) – Slip next 2 sts to cable needle and hold to front, k2 from left needle, k2 from cable needle.



Repeat stitches



Knit Blanket Square



B Town Yarn - Designed by Arlinda Garcia

Blanket Square Size: 10" x 10"
(25.4 x 25.4 cm)

Yarn: any DK, light worsted weight, or equivalent yarn (i.e. fingering weight held double) that makes gauge.

Recommended Needle: US 6 (4 mm) or size needed to achieve gauge.

Gauge: 18 sts and 30 rows over 4" (10cm) in pattern.

Supplies: tapestry needle, stitch markers

Special Abbreviations

This is a list of the special abbreviations. Please refer to [Knitting Abbreviations Master List by the Craft Yarn Council](#)

k – knit
k2tog – knit two sts together
kfb – knit front and back
p – purl
pm – place marker
RS – Right Side
sm – slip marker
st/sts – stitch/stitches
WS – Wrong Side

Sample was made with Andes Amano (60% Alpaca 40% Patagonia Wool) in color Chullo Charcoal.

Pattern Instructions

Cast on 48 stitches.

Knit 4 rows.

Row 5 (RS): Knit across.

Row 6 (WS): K4, pm, k2tog over next 40 sts, pm, k4.

Row 7 (RS): K4, sm, kfb over next 20 sts, sm, k4.

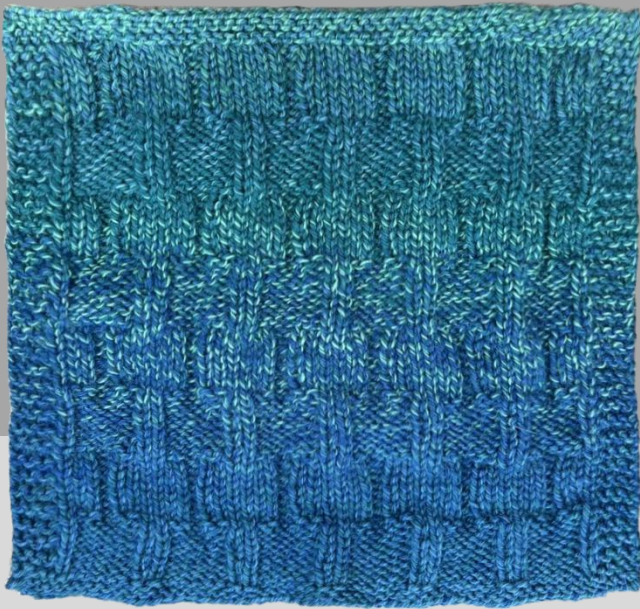
Row 8 (WS): K4, sm, p40, sm, k4.

Rows 9 - 72: Repeat Rows 5 - 8 sixteen more times.

Knit 4 rows.

Bind off all stitches.

Weave in ends and block to 10" x 10" square. Enjoy!



Knit Blanket Square



Bazaar Girls Yarn Shop

**Designed by
Kerri Hartman**

Blanket Square Size: 10" x 10"
(25.4 x 25.4 cm)

Yarn: any DK, light worsted weight, or equivalent yarn (i.e. fingering weight held double) that makes gauge.

Recommended Needle: US 6 (4 mm) or size needed to achieve gauge.

Gauge: 20 sts and 28 rows over 4" (10cm) in block pattern.

Supplies: tapestry needle, stitch markers

Special Abbreviations

This is a list of the special abbreviations. Please refer to [Knitting Abbreviations Master List by the Craft Yarn Council](#)

k - knit
p - purl
st (sts) - stitch (stitches)

Sample was made with Cascade 220 Superwash Wave.

Pattern Instructions

This pattern is worked in an 8-stitch repeat.

Cast on 56 stitches with long tail or preferred cast on method.

Knit 4 rows.

Block Pattern:

Row 1 (RS): K4, *k1, p6, k1, repeat from * 6 times, k4.

Row 2 (WS): K4, *p1, k6, p1, repeat from * 6 times, k4.

Rows 3 - 8: Repeat rows 1 - 2.

Row 9 (RS): k4, *k3, p2, k3, repeat from * 6 times, k4.

Row 10 (WS): k4, *p3, k2, p3, repeat from * 6 times, k4.

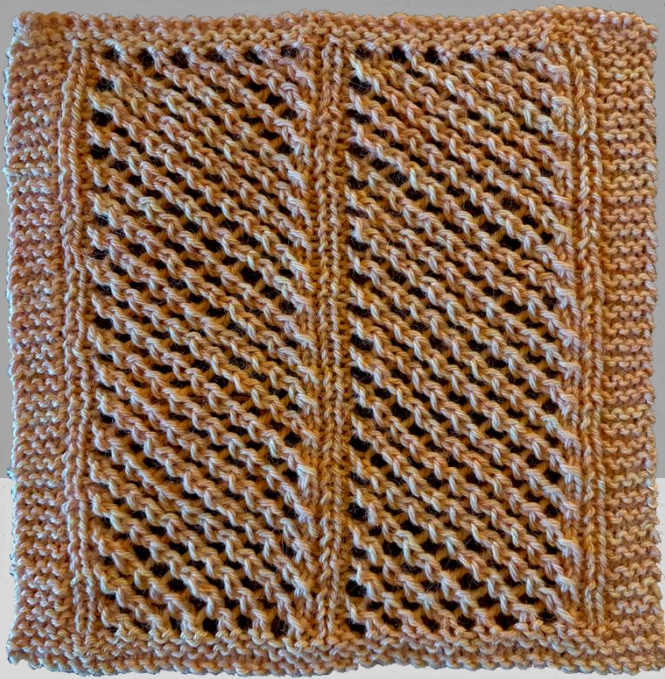
Rows 11 - 16: Repeat rows 9 - 10.

Repeat rows 1 - 16 a total of four times.

Knit 4 rows.

Bind off all stitches.

Weave in ends and block to 10" x 10" square. Enjoy!



Knit Blanket Square



**Fidalgo Artisan Yarn
& Clothing**

**Designed by
Lori Maul**

Blanket Square Size: 10" x 10"
(25.4 x 25.4 cm)

Yarn: any DK, light worsted weight, or equivalent yarn (i.e. fingering weight held double) that makes gauge.

Recommended Needle: US 6 (4 mm) or size needed to achieve gauge.

Gauge: 16 sts and 28 rows over 4" (10cm) in lace pattern.

Supplies: tapestry needle, stitch markers

Special Abbreviations

This is a list of the special abbreviations. Please refer to [Knitting Abbreviations Master List by the Craft Yarn Council](#)

k – knit

k2tog – knit two stitches together

p – purl

st (sts) – stitch (stitches)

yo – yarn over

Sample was made with Fidalgo Artisan Yarn's Merino DK (100% Superwash Merino).

Pattern Instructions

Cast on 41 stitches with long tail or preferred cast on method.

Row 1-4: Knit across row.

Row 5: K4, p1, k1, p1, *yo, k2tog* six times, p1, k1, p1, *yo, k2tog* six times, p1, k1, p1, k4.

Row 6: K5, p1, k1, p12, k1, p1, k1, p12, k1, p1, k5.

Row 7: K4, p1, k1, p1, k1, *yo, k2tog* five times, k1, p1, k1, p1, k1, *yo, k2tog* five times, k1, p1, k1, p1, k4.

Row 8: K5, p1, k1, p12, k1, p1, k1, p12, k1, p1, k5.

Repeat rows 5 - 8 total of 17 times.

Repeat rows 5 - 6 once more.

Final 4 rows: Knit across row.

Bind off all stitches.

Weave in ends and block to 10" x 10" square. Enjoy!



Knit Blanket Square

Great Yarns!

Great Yarns! - Designed by Cherrill Mears

Blanket Square Size: 10" x 10"
(25.4 x 25.4 cm)

Yarn: any DK, light worsted weight, or equivalent yarn (i.e. fingering weight held double) that makes gauge.

Recommended Needle: US 6 (4 mm) or size needed to achieve gauge.

Gauge: 18 sts and 30 rows over 4" (10cm) in pattern.

Supplies: tapestry needle, stitch markers

Special Abbreviations

This is a list of the special abbreviations. Please refer to [Knitting Abbreviations Master List by the Craft Yarn Council](#)

k – knit

p – purl

pm – place marker

RS – Right Side

sk2p – Slip 1 stitch knitwise, knit 2 stitches together, pass slipped stitch over

sm – slip marker

st (sts) – stitch (stitches)

WS – Wrong Side

yo – yarn over

Sample was made with Cascade 220 Superwash Merino in the following colors:

Side and Border Color (**SBC**), No. 13 Lime (Lt Green)

Background Color (**BC**), No. 15 Treetop (Kelly Green)

Contrast Color (**CC**), No. 28 Black

Main Color (**MC**), No. 25 Off White.

Special Instructions

Before casting, cut a 7-yard length of **SBC** color and wind it into a butterfly or a bobbin to use after the bottom border is completed.

Pattern Instructions

With SBC, cast on 55 stitches using the twisted German cast on (also known as Old Norwegian and elastic long tail)

<https://www.youtube.com/watch?v=UcwmCulyll>

<https://nimble-needles.com/stitches/how-to-do-the-german-twisted-cast-on/>

Bottom border: Using SBC, knit 8 rows until there are four garter bumps. Bottom border is now completed.

Body section:

Row 1: Knit the first four stitches using SBC. Now join BC and knit the next 47 stitches. Join the SBC that you have reserved on a bobbin or butterfly and knit the last four stitches. The first and last four stitches will be knit in SBC throughout.

How to join colors in the middle of a row without leaving a gap:

<https://www.youtube.com/watch?v=rhZwpqysm58&t=25s>

(continued on next page...)

Row 2: Knit the first four stitches using the SBC. Bring the BC under the SBC and purl the next 47 stitches using the BC. Knit the last four stitches in SBC.

Rows 3 – 6: Work these rows in stockinette stitch using the SBC and BC colors as established in rows 1 and 2. Four SBC knit stitches on each side and 47 BC stockinette stitches between the two sides.

Row 7: Start the sheep chart at the 13th stitch from the right edge. The SBC chart numbers in the bottom row are highlighted to show where to place the "feet" stitches of the sheep. The numbers in black boxes show placement for the bottom and top rows of 3 sheep. The numbers in blue boxes show placement of the sheep in the middle row of two sheep. If you want 3 sheep in each row just repeat the bottom part of the chart.

Notes: The sheep pattern can be worked using either the Fair Isle or Intarsia methods. If you use the Fair Isle method, you will work with three colors in most rows. If you choose to use the intarsia method, you can carry the BC color and use intarsia only for the sheep. This pattern includes video resources for both methods.

Yardage estimates for the sheep if you use the intarsia method:

Color for body of sheep: 84 inches

Color for feet and face of sheep: 48 inches

Using the established colors for the right and left borders and for the body background, work the bottom section of the chart. These sheep use the MC for the body and the CC for the feet and face. When the bottom row of sheep is completed, knit 3 rows in stockinette, then start the chart for the middle row of sheep using CC for the body and the MC for the feet and face.

After the middle row of sheep is completed, work three more rows of stockinette, then start the top row of sheep using the same chart section and color scheme as for the first row of sheep. Or bust your stash and work each sheep in a different color scheme!!

When all the sheep are done, knit 7 rows stockinette in the established border and center using SBC and BC. After last row, cut the BC color. Using SBC only, knit 8 rows giving you 4 garter bumps to match the bottom border.

Bind off all stitches.

Weave in ends and block to 10" x 10" square. Enjoy!

Video Resources:

Fair Isle Continental or throwing style knitting

<https://nimble-needles.com/tutorials/fair-isle-knitting-tutorial-for-beginners/>

Fair Isle English or throwing style knitting, holding yarn in both hands, catching floats

<https://www.youtube.com/watch?v=V3v4fOOdH0k>

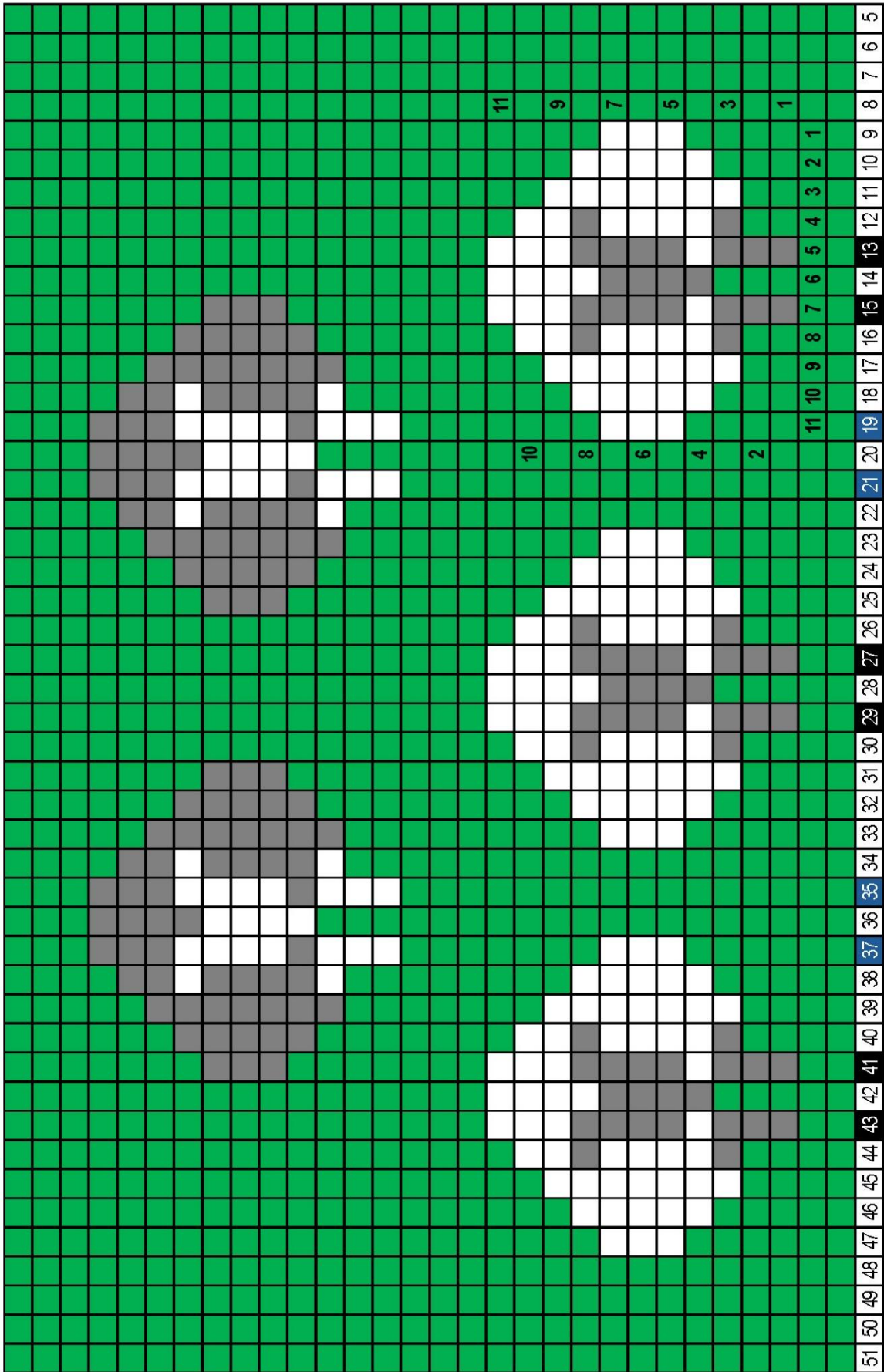
Fair Isle English style with both yarns in the right hand, catching floats

https://www.youtube.com/watch?v=pJWitK_AM_g

Intarsia

https://www.google.com/search?q=intarsia+knitting&og=intarsia+kneeint&gs_lcrp=EgZiaHJvbWUqDwg

(continued on next page for Chart...)





Knit Blanket Square



Hazel Knits

**Designed by
Wendee Shulsen**

Blanket Square Size: 10" x 10"
(25.4 x 25.4 cm)

Yarn: any DK, light worsted weight, or equivalent yarn (i.e. fingering weight held double) that makes gauge.

Recommended Needle: US 6 (4 mm) or size needed to achieve gauge.

Gauge: 20 sts x 32 sts over 4" (10cm) in stockinette.

Supplies: tapestry needle, stitch markers

Special Abbreviations

This is a list of the special abbreviations. Please refer to [Knitting Abbreviations Master List by the Craft Yarn Council](#)

k – knit

p – purl

sm – slip marker

st (sts) – stitch (stitches)

2x – repeat two times

3x – repeat three times

Sample was made with hazel knits, Lively DK, Color: Herb

Pattern Instructions

Cast on 50 stitches using long-tail or preferred cast on method.

Knit 5 rows.

Row 6: K5, p41, k4.

Row 7: K45, p1, k4.

Row 8: K5, p41, k4.

Row 9: K8, p2, k3, (p2, k2) 2x, p2, k21, p2, k4.

Row 10: K6, p21, k2, (p2, k2) 2x, p3, k2, p4, k4.

Row 11: K8, p3, (k2, p2) 3x, k21, p2, k4.

Row 12: K4, p1, k2, p20, (k2, p2) 3x, k2, p5, k4.

Row 13: K9, (p2, k2) 3x, p2, k20, p2, k5.

Row 14: K4, p2, k1, p20, (k2, p2) 2x, k2, p1, k2, p6, k4.

Row 15: K10, p2, k1, (p2, k2) 2x, p2, k19, p2, k6.

Row 16: K4, p2, k2, p19, (k2, p2) 2x, k5, p6, k4.

Row 17: K11, p4, (k2, p2) 2x, k19, p1, k7.

Row 18: K4, p3, k2, p18, (k2, p2) 2x, k4, p7, k4.

Row 19: K11, p4, (k2, p2) 2x, k18, p1, k8.

Row 20: K4, p4, k2, p17, (k2, p2) 2x, k4, p7, k4.

Row 21: K10, p2, k1, (p2, k2) 2x, p2, k17, p2, k8.

Row 22: K4, p5, k2, p16, k6, p2, k2, p1, k2, p6, k4.

(continued on next page...)

Row 23: K10, p2, k1, p2, k2, p6, k16, p2, k9.
 Row 24: K4, p6, k2, p15, k6, (p2, k2) 2x, p5, k4.
 Row 25: K9, p2, k2, p2, k6, p2, k15, p2, k10.
 Row 26: K4, p7, k2, p14, k2, p6, k2, p2, k2, p5, k4.
 Row 27: K13, p2, k6, p2, k13, p3, k11.
 Row 28: K4, p8, k2, p13, k2, p6, k2, p9, k4 .
 Row 29: K13, p2, k6, p2, k12, p2, k13.
 Row 30: K4, p9, k2, p12, k2, p6, k2, p9, k4.
 Row 31: K13, p2, k6, p2, k11, p3, k13.
 Row 32: K4, p9, k4, p10, k2, p6, k2, p9, k4.
 Row 33: K13, p2, k6, p2, k10, p1, k1, p1, k14.
 Row 34: K4, p10, k1, (p2, k1) 2x, (p6, k2) 2x, p9, k4.
 Row 35: K28, p4, k2, p2, k14.
 Row 36: K4, p10, k2, p2, k4, p24, k4.
 Row 37: K28, p4, k2, p2, k14.
 Row 38: K4, p11, k2, p1, k4, p24, k4.
 Row 39: K28, p4, k1, p1, k16.
 Row 40: k4, p12, k1, p2, k2, p25, k4.
 Row 41: K21, p3, k8, p2, k16.
 Row 42: k4, P13, K2, P4, K8, P15, k4.
 Row 43: K18, p10, k3, p2, k17.
 Row 44: K4, p13, k3, p2, k11, p13, k4.
 Row 45: K17, p13, k2, p1, k17.
 Row 46: K4, p13, k1, p3, k13, p12, k4.
 Row 47: K16, p13, k3, p1, k17.
 Row 48: K4, p12, k3, p1, k15, p11, k4.
 Row 49: K15, p15, k1, p3, k16.
 Row 50: K4, p12, k3, p1, k15, p11, k4.

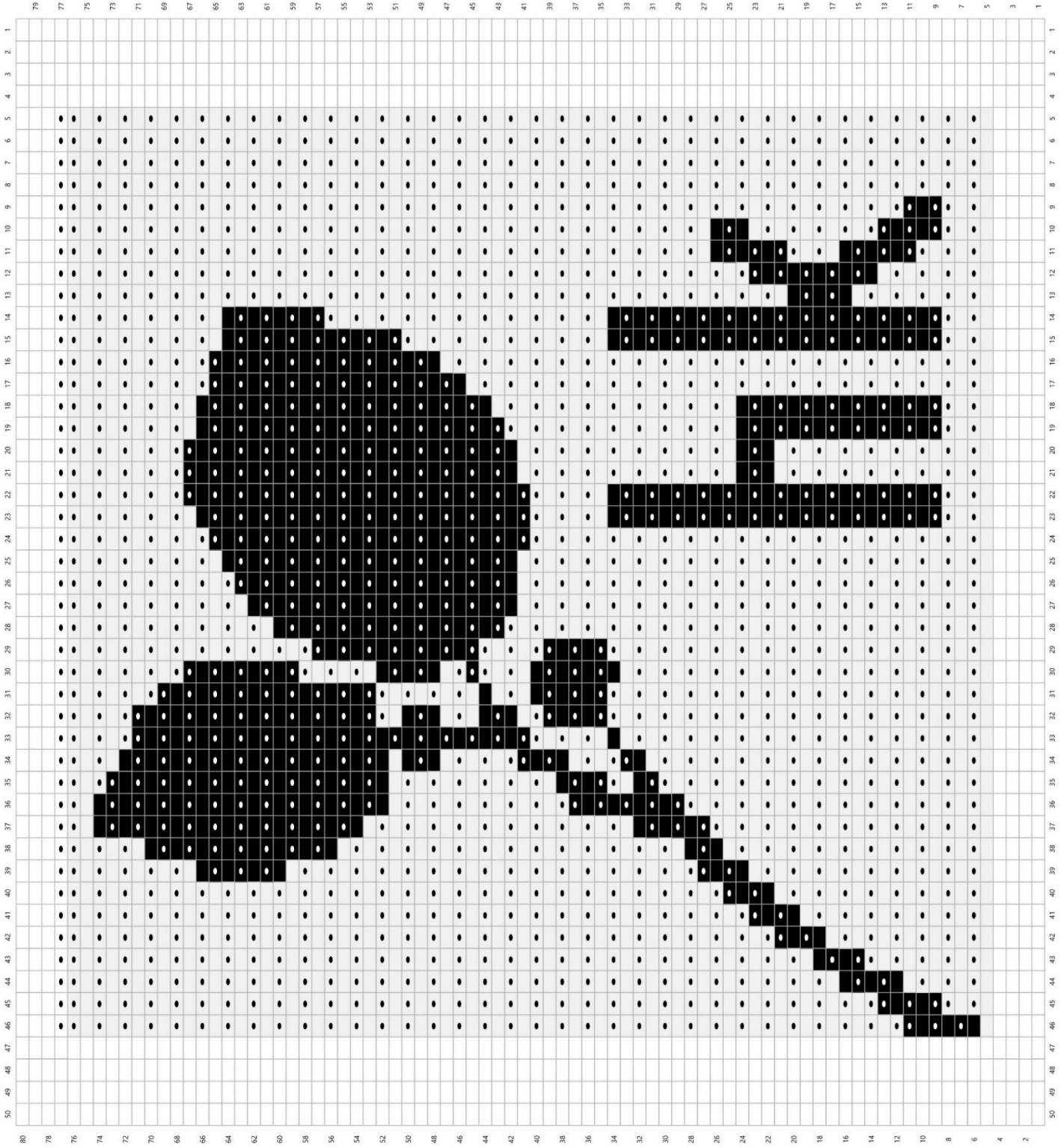
Row 51: K14, p16, k2, p1, k17.
 Row 52: K4, p10, k4, p2, k16, p10, k4.
 Row 53: K14, p15, k1, p6, k14.
 Row 54: K4, p9, k7, p1, k15, p10, k4.
 Row 55: K14, p15, k1, p7, k13.
 Row 56: K4, p8, k8, p1, k15, p10, k4.
 Row 57: K13, p16, k1, p8, k12.
 Row 58: K4, p8, k8, p2, k15, p9, k4.
 Row 59: K13, p15, k1, p9, k12.
 Row 60: K4, p7, k10, p1, k15, p9, k4.
 Row 61: K13, p14, k2, p10, k11.
 Row 62: K4, p7, k10, p2, k14, p9, k4.
 Row 63: K13, p13, k3, p10, k11.
 Row 64: K4, p7, k10, p4, k12, p9, k4.
 Row 65: K15, p9, k5, p10, k11.
 Row 66: K4, p7, k10, p6, k6, p13, k4.
 Row 67: K19, p3, k7, p9, k12.
 Row 68: K4, p8, k8, p26, k4.
 Row 69: K30, p8, k12.
 Row 70: K4, p8, k7, p27, k4.
 Row 71: K31, p6, k13.
 Row 72: K4, p9, k4, p29, k4.
 Row 73: K34, p3, k13.
 Row 74: K4, p9, k2, p31, k4.
 Row 75: Knit.
 Rows 76 - 77: K4, p42, k4.
 Knit 3 rows.

Bind off all stitches.

Weave in ends and block to 10" x 10" square.

Enjoy!

knit
purl





Knit Blanket Square



Knitting & Fiber Arts

**Heart2Heart Knitting
& Fiber Arts**

**Designed by
Lisa Michael**

Blanket Square Size: 10" x 10"
(25.4 x 25.4 cm)

Yarn: any DK, light worsted weight, or equivalent yarn (i.e. fingering weight held double) that makes gauge.

Recommended Needle: US 6 (4 mm) or size needed to achieve gauge.

Gauge: 21 sts and 27 rows over 4" (10cm) in Butterfly Stitch Pattern.

Supplies: tapestry needle, stitch markers

Special Abbreviations

This is a list of the special abbreviations. Please refer to [Knitting Abbreviations Master List by the Craft Yarn Council](#)

k – knit

k2tog – knit 2 together

p – purl

psso – pass slipped stitch over

RS – Right Side

sl1 – slip 1 stitch purlwise

st (sts) – stitch (stitches)

WS – Wrong Side

yo - yarn over

Sample was made with Berroco Vintage DK.

Notes

This block features a single - eyelet rib pattern that is quick to memorize and makes for a speedy but interesting design. The main pattern is an easy but delicate eyelet pattern that repeats 9 times across each row and is flanked by 4 garter stitches, which frame the eyelet pattern nicely.

Pattern Instructions

This pattern is worked in multiples of 5 + 2 (not counting selvedge stitches).

Cast on 55 stitches using long-tail or preferred cast on method.

Knit 4 rows.

Eyelet Rib Pattern

Row 1 (RS): K4, p2, *k3, p2, repeat from * to last4 sts, k4.

Rows 2, 4, 6, & 8 (WS): K6, *p3, k2, repeat from * to last 4 sts, k4.

Row 3: K4, p2, *k2tog, yo, k1, p2, repeat from * to last 4 sts, k4.

Row 5: Repeat Row 1.

Row 7: K4, p2, *k1, yo, sl1, k1, psso, p2, repeat from * to last 4 sts, k4.

Repeat Rows 1 – 8 eight more times (9 total repeats).

Knit 4 rows.

Bind off all stitches.

Weave in ends and block to 10" x 10" square. Enjoy!



Knit Blanket Square



Makers' Mercantile

Designed by
Kyle Kunnecke

Blanket Square Size: 10" x 10"
(25.4 x 25.4 cm)

Yarn: any DK, light worsted weight, or equivalent yarn (i.e. fingering weight held double) that makes gauge.

Recommended Needle: US 6 (4 mm) or size needed to achieve gauge.

Gauge: 20 sts and 40 rows over 4" (10cm) in pattern, worked flat.

Supplies: tapestry needle, stitch markers

Special Abbreviations

This is a list of the special abbreviations. Please refer to [Knitting Abbreviations Master List by the Craft Yarn Council](#)

EOR – End of Row

k – knit

p – purl

pm – place marker

RS – Right Side

sm – slip marker

st (sts) – stitch (stitches)

WS – Wrong Side

YO – yarn over

Sample was made with Simplicity by HiKoo® (55% Merino, 28% Acrylic, 17% Nylon) in Color 1 (C1) 044 Make Me Blush, and Color 2 (C2) 027 Nile Blue.

Pattern Instructions

With C1, cast on 50 stitches using the German twisted cast on. Cast-on counts as Row 1.

Row 2 (WS): K to EOR.

Row 3 (RS): Join C2, k9, pm, (k11, pm) 3 times, k to EOR - [4 markers placed].

Row 4 (WS): With C2, slipping markers, k to EOR.

Row 5 (RS): With C1, slipping markers, k to EOR.

Begin Chart:

Note: Yarn colors are switched every 2 rows. When switching between colors, always bring the new yarn up under the old yarn. Chart on Page 5. Only WS (even) rows are shown on chart, and chart rows are read from left to right. The repeated 11-stitch section of the chart is worked three times in each row.

Row 6 (WS): With C1, slipping markers, k to EOR.

Row 7 (RS): With C2, slipping markers, k to EOR.

Row 8 (WS): With C2, slipping markers, k to EOR.

Row 9 (RS): With C1, slipping markers, k to EOR.

Row 10 (WS): With C1, k2, p2, k4, sm, (k5, p2, k4, sm) 3 times, k5, p2, k2.

(continued on next page...)

Row 11 (RS): With C2, slipping markers, k to EOR.

Row 12 (WS): With C2, k4, p4, sm, (p5, k2, p4, sm) 3 times, p5, k4.

Row 13 (RS): With C1, slipping markers, k to EOR.

Row 14 (WS): With C1, k2, p2, k4, sm, (k5, p2, k4, sm) 3 times, k5, p2, k2.

Row 15 (RS): With C2, slipping markers, k to EOR.

Row 16 (WS): With C2, k4, p4, sm, (p5, k2, p4, sm) 3 times, p5, k4.

Row 17 (RS): With C1, slipping markers, k to EOR.

Row 18 (WS): With C1, k2, p3, k3, sm, (k4, p4, k3, sm) 3 times, k4, p3, k2.

Row 19 (RS): With C2, slipping markers, k to EOR.

Row 20 (WS): With C2, k5, p3, sm, (p4, k4, p3, sm) 3 times, p4, k5.

Row 21 (RS): With C1, slipping markers, k to EOR.

Row 22 (WS): With C1, k2, p3, k3, sm, (k4, p4, k3, sm) 3 times, k4, p3, k2.

Row 23 (RS): With C2, slipping markers, k to EOR.

Row 24 (WS): With C2, k5, p3, sm, (p4, k4, p3, sm) 3 times, p4, k5.

Row 25 (RS): With C1, slipping markers, k to EOR.

Row 26 (WS): With C1, k4, p2, k2, sm, (k3, p2, k2, p2, k2, sm) 3 times, k3, p2, k4.

Row 27 (RS): With C2, slipping markers, k to EOR.

Row 28 (WS): With C2, (k2, p2) twice, sm, (p3, k2, p2, k2, p2, sm) 3 times, p3, k2, p2, k2.

Row 29 (RS): With C1, slipping markers, k to EOR.

Row 30 (WS): With C1, k4, p2, k2, sm, (k3, p2, k2, p2, k2, sm) 3 times, k3, p2, k4.

Row 31 (RS): With C2, slipping markers, k to EOR.

Row 32 (WS): With C2, (k2, p2) twice, sm, (p3, k2, p2, k2, p2, sm) 3 times, p3, k2, p2, k2.

Row 33 (RS): With C1, slipping markers, k to EOR.

Row 34 (WS): With C1, k5, p2, k1, sm, (k2, p2, k4, p2, k1, sm) 3 times, k2, p2, k5.

Row 35 (RS): With C2, slipping markers, k to EOR.

Row 36 (WS): With C2, k2, p3, k2, p1, sm, (p2, k2, p4, k2, p1, sm) 3 times, p2, k2, p3, k2.

Row 37 (RS): With C1, slipping markers, k to EOR.

Row 38 (WS): With C1, k5, p2, k1, sm, (k2, p2, k4, p2, k1, sm) 3 times, k2, p2, k5.

Row 39 (RS): With C2, slipping markers, k to EOR.

Row 40 (WS): With C2, k2, p3, k2, p1, sm, (p2, k2, p4, k2, p1, sm) 3 times, p2, k2, p3, k2.

Row 41 (RS): With C1, slipping markers, k to EOR.

Row 42 (WS): With C1, (k2, p2) twice, sm, (k1, p2, k2, p2, k2, p2, sm) 3 times, k1, (p2, k2) twice.

Row 43 (RS): With C2, slipping markers, k to EOR.

Row 44 (WS): With C2, k4, p2, k2, sm, (p1, k2, p2, k2, p2, k2, sm) 3 times, p1, k2, p2, k4.

Row 45 (RS): With C1, slipping markers, k to EOR.

Row 46 (WS): With C1, (k2, p2) twice, sm, (p3, k2, p2, k2, p2, sm) 3 times, p3, k2, p2, k2.

(continued on next page...)

Row 47 (RS): With C2, slipping markers, k to EOR.

Row 48 (WS): With C2, k4, p2, k2, sm, (k3, p2, k2, p2, k2, sm) 3 times, k3, p2, k4.

Row 49 (RS): With C1, slipping markers, k to EOR.

Row 50 (WS): With C1, k2, p3, k2, p1, sm, (p2, k2, p4, k2, p1, sm) 3 times, p2, k2, p3, k2.

Row 51 (RS): With C2, slipping markers, k to EOR.

Row 52 (WS): With C2, k5, p2, k1, sm, (k2, p2, k4, p2, k1, sm) 3 times, k2, p2, k5.

Row 53 (RS): With C1, slipping markers, k to EOR.

Row 54 (WS): With C1, (k2, p2) twice, sm, (p3, k2, p2, k2, p2, sm) 3 times, p3, k2, p2, k2.

Row 55 (RS): With C2, slipping markers, k to EOR.

Row 56 (WS): With C2, k4, p2, k2, sm, (k3, p2, k2, p2, k2, sm) 3 times, k3, p2, k4.

Row 57 (RS): With C1, slipping markers, k to EOR.

Row 58 (WS): With C1, (k2, p2) twice, sm, (k1, p2, k2, p2, k2, p2, sm) 3 times, k1, (p2, k2) twice.

Row 59 (RS): With C2, slipping markers, k to EOR.

Row 60 (WS): With C2, k4, p2, k2, sm, (p1, k2, p2, k2, p2, k2, sm) 3 times, p1, k2, p2, k4.

Row 61 (RS): With C1, slipping markers, k to EOR.

Row 62 (WS): With C1, k5, p2, k1, sm, (k2, p2, k4, p2, k1, sm) 3 times, k2, p2, k5.

Row 63 (RS): With C2, slipping markers, k to EOR.

Row 64 (WS): With C2, k2, p3, k2, p1, sm, (p2, k2, p4, k2, p1, sm) 3 times, p2, k2, p3, k2.

Row 65 (RS): With C1, slipping markers, k to EOR.

Row 66 (WS): With C1, k5, p2, k1, sm, (k2, p2, k4, p2, k1, sm) 3 times, k2, p2, k5.

Row 67 (RS): With C2, slipping markers, k to EOR.

Row 68 (WS): With C2, k2, p3, k2, p1, sm, (p2, k2, p4, k2, p1, sm) 3 times, p2, k2, p3, k2.

Row 69 (RS): With C1, slipping markers, k to EOR.

Row 70 (WS): With C1, k4, p2, k2, sm, (k3, p2, k2, p2, k2, sm) 3 times, k3, p2, k4.

Row 71 (RS): With C2, slipping markers, k to EOR.

Row 72 (WS): With C2, (k2, p2) twice, sm, (p3, k2, p2, k2, p2, sm) 3 times, p3, k2, p2, k2.

Row 73 (RS): With C1, slipping markers, k to EOR.

Row 74 (WS): With C1, k4, p2, k2, sm, (k3, p2, k2, p2, k2, sm) 3 times, k3, p2, k4.

Row 75 (RS): With C2, slipping markers, k to EOR.

Row 76 (WS): With C2, (k2, p2) twice, sm, (p3, k2, p2, k2, p2, sm) 3 times, p3, k2, p2, k2.

Row 77 (RS): With C1, slipping markers, k to EOR.

Row 78 (WS): With C1, k2, p3, k3, sm, (k4, p4, k3, sm) 3 times, k4, p3, k2.

Row 79 (RS): With C2, slipping markers, k to EOR.

Row 80 (WS): With C2, k5, p3, sm, (p4, k4, p3, sm) 3 times, p4, k5.

Row 81 (RS): With C1, slipping markers, k to EOR.

Row 82 (WS): With C1, k2, p3, k3, sm, (k4, p4, k3, sm) 3 times, k4, p3, k2.

(continued on next page...)

Row 83 (RS): With C2, slipping markers, k to EOR.

Row 84 (WS): With C2, k5, p3, sm, (p4, k4, p3, sm) 3 times, p4, k5.

Row 85 (RS): With C1, slipping markers, k to EOR.

Row 86 (WS): With C1, k2, p2, k4, sm, (k5, p2, k4, sm) 3 times, k5, p2, k2.

Row 87 (RS): With C2, slipping markers, k to EOR.

Row 88 (WS): With C2, k4, p4, sm, (p5, k2, p4, sm) 3 times, p5, k4.

Row 89 (RS): With C1, slipping markers, k to EOR.

Row 90 (WS): With C1, k2, p2, k4, sm, (k5, p2, k4, sm) 3 times, k5, p2, k2.

Row 91 (RS): With C2, slipping markers, k to EOR.

Row 92 (WS): With C2, k4, p4, sm, (p5, k2, p4, sm) 3 times, p5, k4.

Row 93 (RS): With C1, removing markers, k to EOR.

Row 94 (WS): With C1, k to EOR.

Row 95 (RS): With C2, k to EOR.

Row 96 (WS): With C2, k to EOR.

Row 97 (RS): With C1, k to EOR.

Row 98 (WS): With C1, k to EOR.

Cut C1, leaving a 6" (15 cm) tail.

Complete work with C2.

Row 99 (RS): With C2, k to EOR.

Row 100 (WS): With C2, Bind off all stitches using Icelandic bind-off.

Cut yarn, leaving a 6" (15 cm) tail.

Finishing

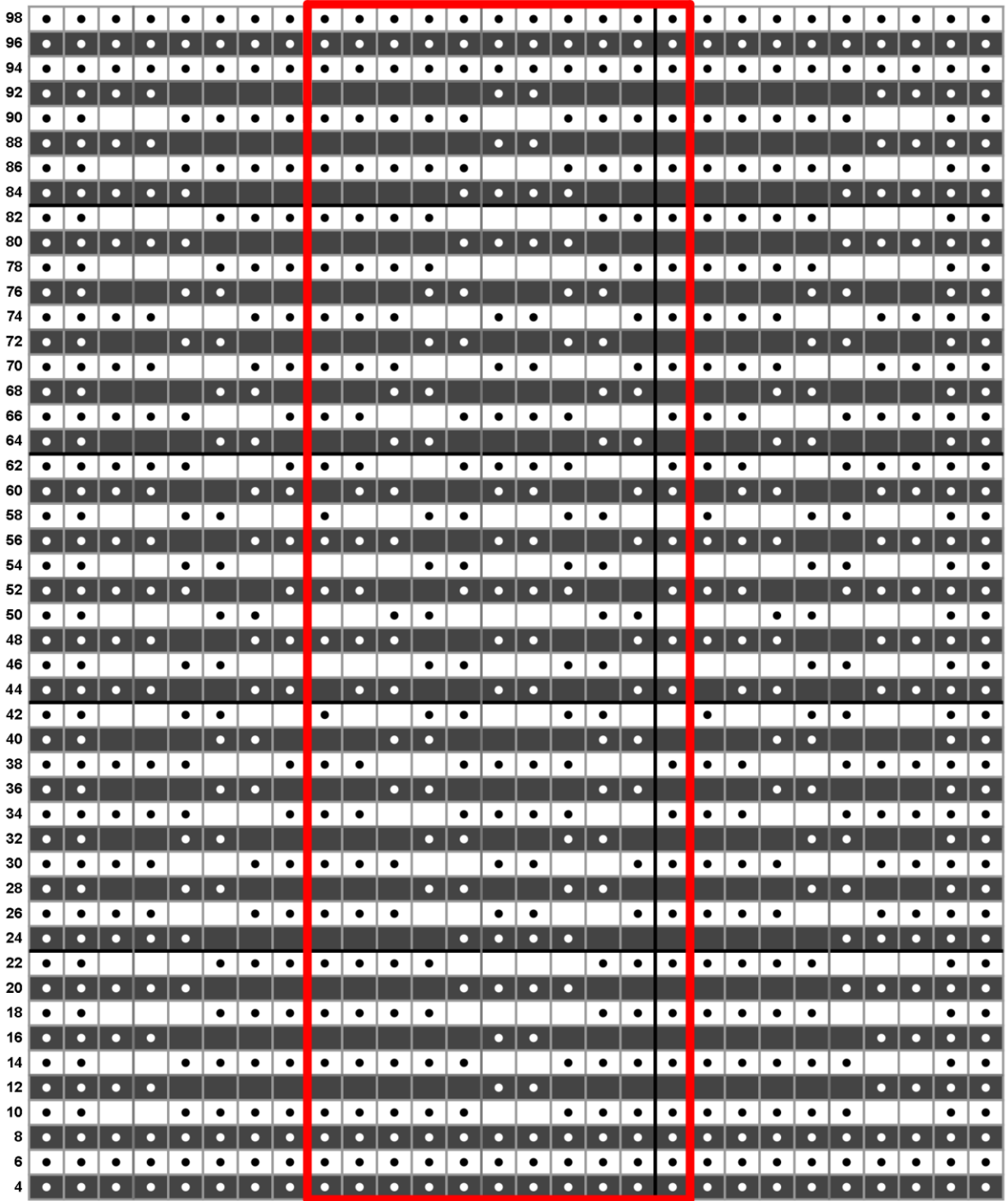
Weave in ends and block to 10" x 10" square. Enjoy!

Steam-blocking individual blocks:

Pin block to finished measurements on a blocking board. Using a garment steamer or the steam from an iron held just above the surface (do not press or touch the fabric), slowly pass the steam across the block, allowing the heat and moisture to relax the stitches. Let the piece dry completely before unpinning or handling. Wait to trim yarn tails until after the blanket is assembled.



View of the finished blanket square at an angle showing the illusion image.



- With C1: K on RS, P on WS
- With C1: P on RS, K on WS
- With C2: K on RS, P on WS
- With C2: P on RS, K on WS
- Repeat



Knit Blanket Square



Needles & Hooks

**Designed by
Jill Scott**

Blanket Square Size: 10" x 10"
(25.4 x 25.4 cm)

Yarn: any DK, light worsted weight, or equivalent yarn (i.e. fingering weight held double) that makes gauge.

Recommended Needle: US 6 (4 mm) or size needed to achieve gauge.

Gauge: 20 sts over 4" (10cm) in stockinette.

Supplies: tapestry needle, stitch markers

Special Abbreviations

This is a list of the special abbreviations. Please refer to [Knitting Abbreviations Master List by the Craft Yarn Council](#)

- k – knit
- k2tog – knit two together
- k3tog – knit three together
- p – purl
- p2tog – purl two together
- p3tog – purl three together
- st (sts) – stitch (stitches)
- yo – yarn over
- x2 (x#) – repeat two (or number) times

Sample was made with Malabrigo Rios.

Pattern Instructions

Cast on 50 stitches using long-tail or preferred cast on method.

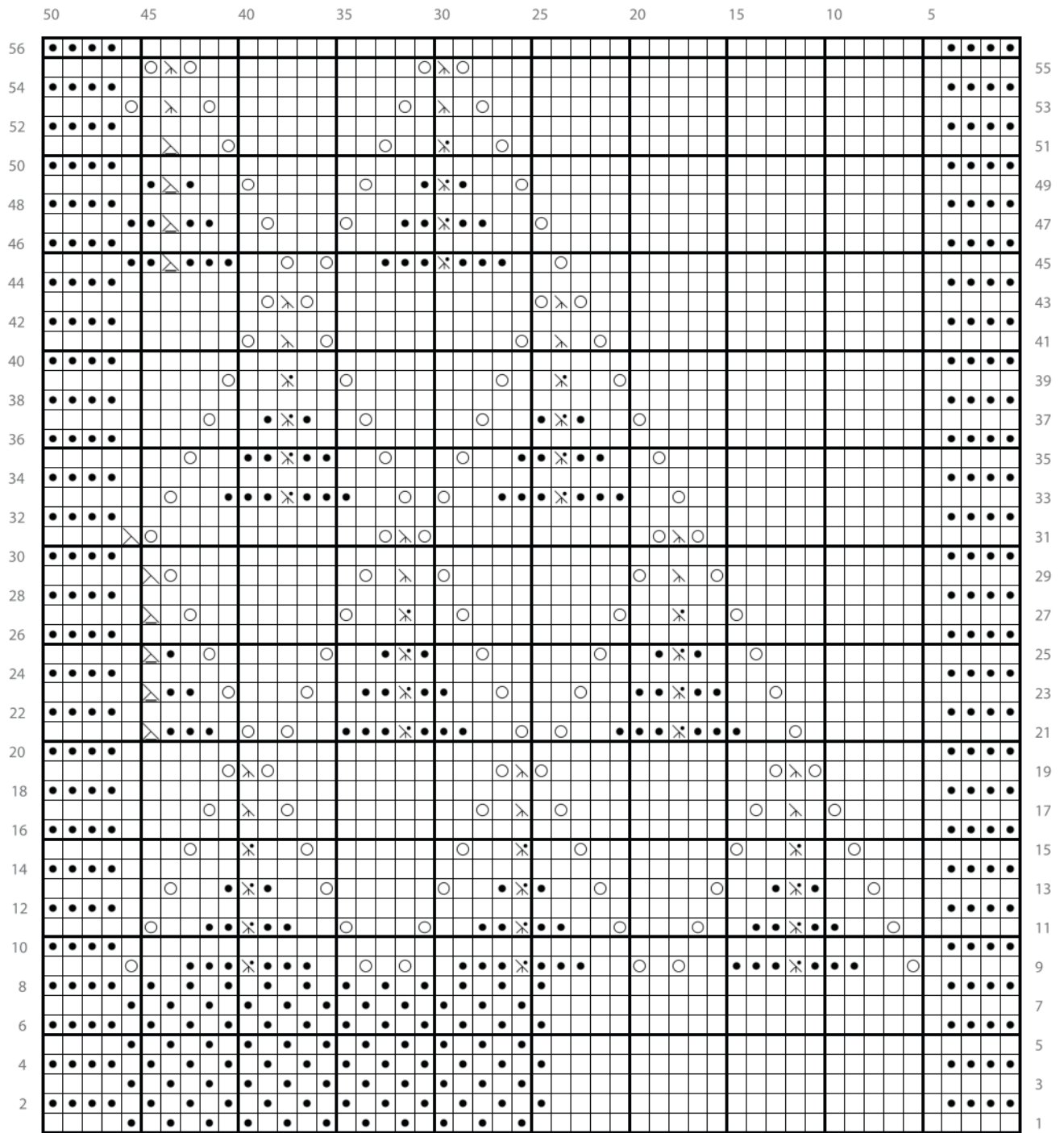
Knit 12 rows (omit last row if you used a long tail cast on).


Work Rows 1 - 56 of Chart on Page 2 or follow Written Chart Instructions on Page 3.

Knit 12 rows.

Bind off all stitches.

Weave in ends and block to 10" x 10" square. Enjoy!



Right Side	Wrong Side
 k	p
 p	k
 yarn over	N/a
 P2tog	N/a
 P3tog	N/a
 K3tog	N/a
 K2tog	N/a

Written Chart Instructions

Row 1: K25, (p1, k1) x10, p1, k4.

Rows 2, 4, 6, 8: K4, (p1, k1) x11, p20, k4.

Row 3: K25, (p1, k1) x11, k3.

Row 5: K25, (p1, k1) x11, k3.

Row 7: K25, (p1, k1) x11, k3.

Row 9: K5, (yo, k2, p3, P3tog, p3, k2, yo, k) x3, k3.

Row 10 and all remaining even rows: K4, p42, k4.

Row 11: K6, (yo, k2, p2, p3tog, p2, k2, yo, k3) x3, k2.

Row 13: K7, (yo, k2, p1, p3tog, p1, k2, yo, k5) x3, k1.

Row 15: K8, (yo, k2, p3tog, k2, yo, k7) x3.

Row 17: K9, (yo, k1, k3tog, k1, yo, k9) x2, yo, k1, k3tog, k1, yo, k8.

Row 19: K10, (yo, k3tog, yo, k11) x2, yo, k3tog, yo, k9.

Row 21: K11, (yo, k2, p3, p3tog, p3, k2, yo, k1) x2, yo, k1, p3, p2tog, k5.

Row 23: K12, (yo, k2, p2, p3tog, p2, k2, yo, k3) x2, yo, k1, p2, p2tog, k5.

Row 25: K13, (yo, k2, p1, p3tog, p1, k2, yo, k5) x2, yo, k1, p1, p2tog, k5.

Row 27: K14, (yo, k2, p3tog, k2, yo, k7) x2, yo, k1, p2tog, k5.

Row 29: K15, (yo, k1, k3tog, k1, yo, k9) x2, yo, k2tog, k5.

Row 31: K16, (yo, k3tog, yo, k11) x2, yo, k2tog, k4.

Row 33: K17, (yo, k2, p3, p3tog, p3, k2, yo, k1) x2, k5.

Row 35: K18, (yo, k2, p2, p3tog, p2, k2, yo, k3) x2, k4.

Row 37: K19, (yo, k2, p1, p3tog, p1, k2, yo, k5) x2, k3.

Row 39: K20, (yo, k2, p3tog, k2, yo, k7) x2, k2.

Row 41: K21, (yo, k1, k3tog, k1, yo, k9) x2, k1.

Row 43: K22, (yo, k3tog, yo, k11) x2.

Row 45: K23, yo, k2, p3, p3tog, p3, k2, yo, k1, yo, k2, p3, p2tog, p2, k4.

Row 47: K24, yo, k2, p2, p3tog, p2, k2, yo, k3, yo, k2, p2, p2tog, p2, k4.

Row 49: K25, yo, k2, p1, p3tog, p1, k2, yo, k5, yo, k2, p1, p2tog, p1, k5.

Row 51: K26, yo, k2, p3tog, k2, yo, k7, yo, k2, p2tog, k6.

Row 53: K27, yo, k1, k3tog, k1, yo, k9, yo, k1, k3tog, k1, yo, k4.

Row 55: K28, yo, k3tog, yo, k11, yo, k3tog, yo, k5.



Knit Blanket Square



NORTHWEST
YARNS & MERCANTILE

Northwest Yarns & Mercantile

Designed by
Heather SeEVERS

Blanket Square Size: 10" x 10"
(25.4 x 25.4 cm)

Yarn: any DK, light worsted weight, or equivalent yarn (i.e. fingering weight held double) that makes gauge.

Recommended Needle: US 6 (4 mm) or size needed to achieve gauge.

Gauge: 20 sts and 28 rows over 4" (10cm) in pattern, worked flat.

Supplies: tapestry needle, stitch markers

Special Abbreviations

This is a list of the special abbreviations. Please refer to [Knitting Abbreviations Master List by the Craft Yarn Council](#)

k – knit

p – purl

RS – Right Side

st (sts) – stitch (stitches)

WS – Wrong Side

Sample was made with Queensland Collection Tenderfoot held double throughout.

Pattern Instructions

With MC, cast on 51 stitches using the German twisted cast on.

Work Rows 1 - 61 of Chart on Page 2.

Notes:

After Row 10, your work should measure at least 1.75" from cast on edge. If you are short, repeat Rows 10 and 11 to the recommended length before moving to Row 12.

Use preferred colorwork management for colorwork.

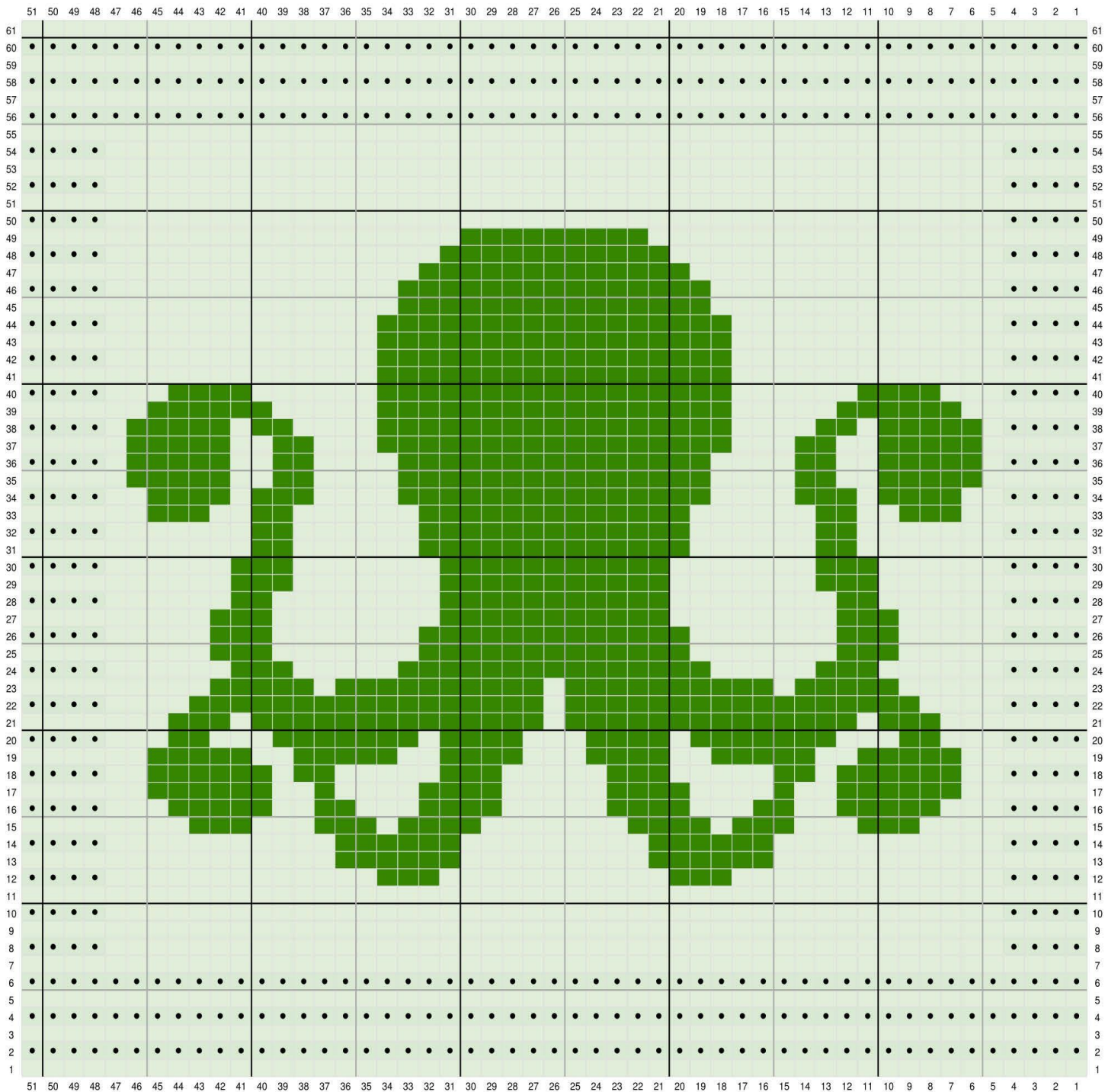
Sample combines both intarsia and stranded colorwork:



After Row 55, your work should measure at least 9" from cast on edge. If you are short, repeat Rows 54 and 55 to the recommended length before moving to Row 56.

Bind off all stitches.

Weave in ends and block to 10" x 10" square. Enjoy!



Contrast Color - RS Knit / WS Purl



Main Color - RS Knit / WS Purl



Main Color - WS Knit



Knit Blanket Square



Quintessential Knits

**Designed by
BreAnna Havel**

Blanket Square Size: 10" x 10"
(25.4 x 25.4 cm)

Yarn: any DK, light worsted weight, or equivalent yarn (i.e. fingering weight held double) that makes gauge.

Recommended Needle: US 6 (4 mm) or size needed to achieve gauge.

Gauge: 20 sts and 28 rows over 4" (10cm) in pattern.

Supplies: cable needle, tapestry needle, stitch markers

Special Abbreviations

This is a list of the special abbreviations. Please refer to [Knitting Abbreviations Master List by the Craft Yarn Council](#)

C4B – Cable 4 Back

k – knit

p – purl

RS – Right Side

st (sts) – stitch (stitches)

WS – Wrong Side

Sample was made with Cascade 220 Superwash Merino.

Notes

Instructions in parentheses () should be repeated as indicated.

Special Stitches

Cable 4 Back (C4B) – Slip next 2 sts to cable needle and hold to back, k2 from left needle, k2 from cable needle.

Pattern Instructions

Cast on 50 stitches with long tail or preferred cast on method.

Knit 7 rows.

Row 1 & all WS Rows (WS): K5, (k2, p4, k2) until 5 sts remain, k5.

Row 2 (RS): K4, p1, (p2, k4, p2) until 5 sts remain, p1, k4.

Row 4 (RS): Repeat Row 2.

Row 6 (RS): K4, p1, (p2, C4B, p2) until 5 sts remain, p1, k4.

Row 8 (RS): Repeat Row 2.

Row 10 (RS): Repeat Row 6.

Row 12 (RS): Repeat Row 2.

Repeat Rows 1 – 12 until piece measures about 9" from cast on edge, ending after a RS row.

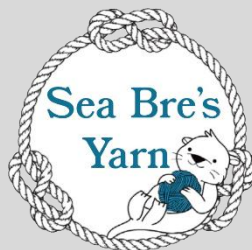
Knit 7 rows.

Bind off all stitches.

Weave in ends and block to 10" x 10" square. Enjoy!



Knit Blanket Square



Sea Bre's Yarn

**Designed by
BreAnna Havel**

Blanket Square Size: 10" x 10"
(25.4 x 25.4 cm)

Yarn: any DK, light worsted weight, or equivalent yarn (i.e. fingering weight held double) that makes gauge.

Recommended Needle: US 6 (4 mm) or size needed to achieve gauge.

Gauge: 20 sts and 40 rows over 4" (10cm) in garter stitch.

Supplies: tapestry needle, stitch markers

Special Abbreviations

This is a list of the special abbreviations. Please refer to [Knitting Abbreviations Master List by the Craft Yarn Council](#)

k – knit

p – purl

pm - place marker

RS – Right Side

s1wyib - Slip 1 stitch with yarn in back

s1wyif - Slip 1 stitch with yarn in front

sm - slip marker

st (sts) – stitch (stitches)

WS - Wrong Side

Sample was made with Cascade 220 Superwash Merino.

Pattern Instructions

Cast on 50 stitches with long tail or preferred cast on method.
Knit 7 rows.

Set up row: K4, pm, p42, pm, k4.

Row 1 (RS): K4, *k1, s1wyib, repeat from * until 6 sts remain, k6.

Row 2 (WS): K4, p2, *s1wyif, p1, repeat from * until 4 sts remain, k4.

Row 3 (RS): K50.

Row 4 (WS): K4, p42, k4.

Row 5 (RS): K6, *s1wyib, k1, repeat from * until 4 sts remain, k4.

Row 6 (WS): K4, *p1, s1wyif, repeat from * until 6 sts remain, p2, k4.

Row 7 (RS): K50.

Row 8 (WS): K4, p42, k4.

Repeat Rows 1 - 8 until square measures 9" from cast on, ending after Row 3 or Row 7 ("K50" row).

Knit 7 rows.

Bind off all stitches.

Weave in ends and block to 10" x 10" square. Enjoy!



Knit Blanket Square



Seattle Yarn

Designed by
Lisa Michael

Blanket Square Size: 10" x 10"
(25.4 x 25.4 cm)

Yarn: any DK, light worsted weight, or equivalent yarn (i.e. fingering weight held double) that makes gauge.

Recommended Needle: US 6 (4 mm) or size needed to achieve gauge.

Gauge: 22 sts and 27 rows over 4" (10cm) in pattern after blocking.

Supplies: tapestry needle, stitch markers

Special Abbreviations

This is a list of the special abbreviations. Please refer to [Knitting Abbreviations Master List by the Craft Yarn Council](#)

k – knit

p – purl

RS – Right Side

st (sts) – stitch (stitches)

WS – Wrong Side

Sample was made with Huephoria Fibers Student Council DK.

Notes

This pattern is worked on multiples of 5 with an additional 4 stitches on each end to make garter stitch border.

Pattern Instructions

Cast on 58 stitches using long-tail or preferred cast on method.
Knit 4 rows.

Row 1 (RS): Knit to end.

Row 2 (WS): K4, *k1, p4, repeat from * to last 4 sts, k4.

Row 3 (RS): K4, *k3, p2, repeat from * to last 4 sts, k4.

Row 4 (WS): Repeat Row 3.

Row 5 (RS): Repeat Row 2.

Row 6 (WS): Knit to end.

Repeat Rows 1 – 6 eleven more times (12 total repeats).

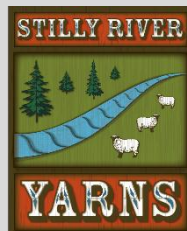
Knit 4 rows.

Bind off all stitches.

Weave in ends and block to 10" x 10" square. Enjoy!



Knit Blanket Square



Stilly River Yarns

Designed by
Sarah Dobbins

Blanket Square Size: 10" x 10"
(25.4 x 25.4 cm)

Yarn: any DK, light worsted weight, or equivalent yarn (i.e. fingering weight held double) that makes gauge.

Recommended Needle: US 6 (4 mm) or size needed to achieve gauge.

Gauge: 20 sts and 26 rows over 4" (10cm) in Garter Stitch Blocked.

Supplies: tapestry needle, stitch markers

Special Abbreviations

This is a list of the special abbreviations. Please refer to [Knitting Abbreviations Master List by the Craft Yarn Council](#)

2/2 LC – 2 over 2 left cross cable

2/2 RC – 2 over 2 right cross cable

k – knit

RS – Right Side

sl1 wyif – slip 1 st with yarn in front

st (sts) – stitch (stitches)

WS – Wrong Side

Sample was made Cascade 220 Superwash.

Special Stitches

2 over 2 left cross cable (2/2 LC) – Slip next 2 stitches to cable needle and place at front of work, k2, then k2 from cable needle.

2 over 2 right cross cable (2/2 RC) – Slip next 2 stitches to cable needle and place at back of work, k2, then k2 from cable needle.

Notes

Instructions within parentheses () should be repeated as many times as indicated.

Pattern Instructions

Cast on 60 stitches using long-tail or preferred cast on method.
Knit 4 rows.

(continued on next page...)

Row 5: K4, p3, (k12, p2, k1, p2) two times, k12, p3, k4.

Row 6: K7, (p12, k2, sl1 wyif, k2) two times, p12, k7.

Row 7: Repeat Row 5.

Row 8: Repeat Row 6.

Row 9: K4, p3 (k2, 2/2 RC, 2/2 LC, k2, p2, k1, p2) two times,
k2, 2/2 RC, 2/2 LC, k2, p3, k4.

Row 10: Repeat Row 6.

Row 11: K4, p3, (2/2 RC, k4, 2/2 LC, p2, k1, p2) two times,
2/2 RC, k4, 2/2 LC, p3, k4.

Row 12: Repeat Row 6.

Row 13: K4, p3, (k2, 2/2 RC, 2/2 LC, k2, p2, k1, p2) two times, k2, 2/2 RC, 2/2 LC, k2, p3, k4.

Row 14: Repeat Row 6.

Row 15: K4, p3, (2/2 RC, k4, 2/2 LC, p2, k1, p2) two times, 2/2 RC, k4, 2/2 LC, p3, k4.

Row 16: Repeat Row 6.

Row 17: K4, p3 (2/2 LC, k4, 2/2 RC, p2, k1, p2) two times, 2/2 LC, k4, 2/2 RC, p3, k4.

Row 18: Repeat Row 6.

Row 19: K4, p3, (k2, 2/2 LC, 2/2 RC, k2, p2, k1, p2) two times, k2, 2/2 LC, 2/2 RC, k2, p3, k4.

Row 20: Repeat Row 6.

Repeat Rows 9 – 20 three more times.

Repeat Rows 5 – 6 one more time.

Repeat Row 5 once more.

Knit 4 rows.

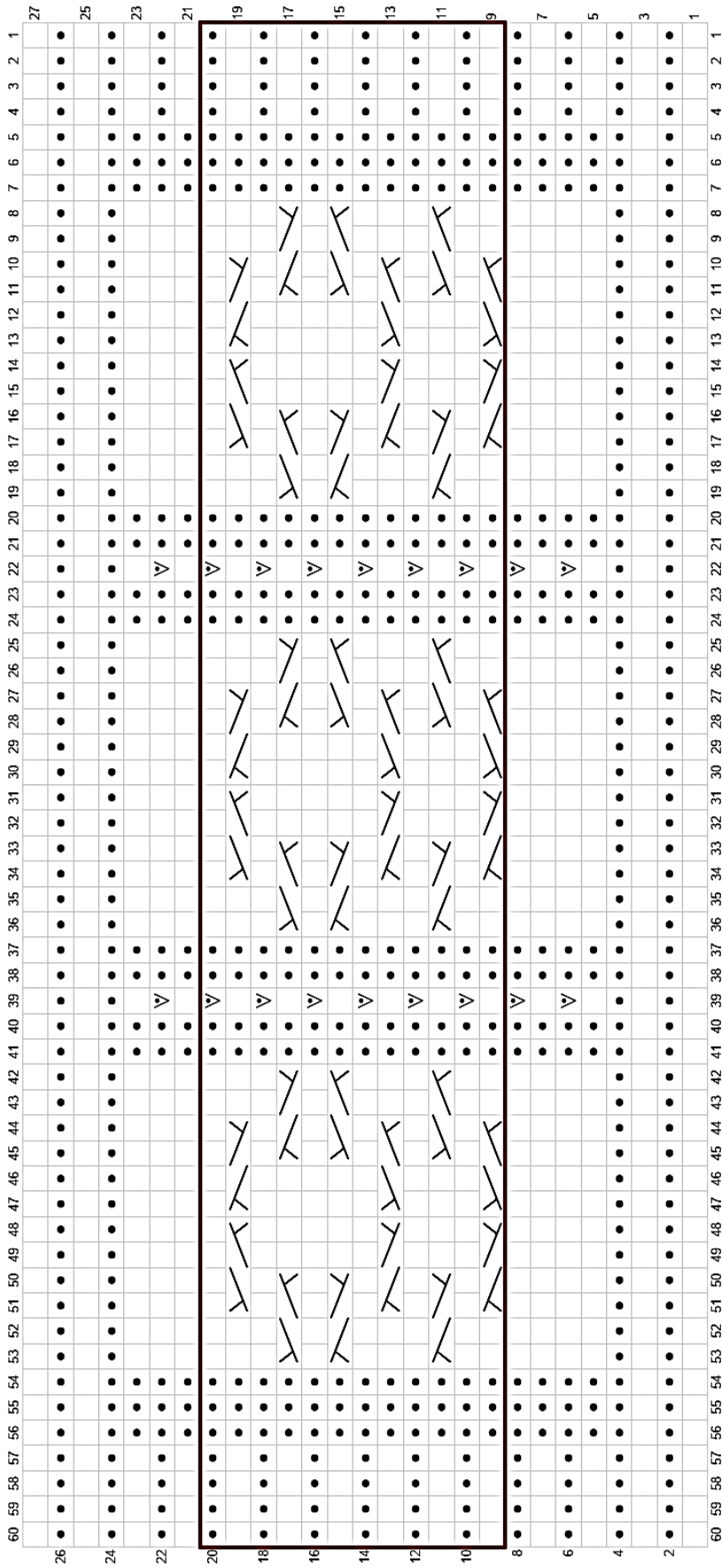
Bind off all stitches loosely.

Weave in ends and block to 10" x 10" square. Enjoy!

Special Stitches

2 over 2 left cross cable (2/2 LC) –
Slip next 2 sts to cable needle and hold
to front, k2, then k2 from cable needle.

2 over 2 right cross cable (2/2 RC) –
Slip next 2 sts to cable needle and hold
to back, k2, then k2 from cable needle.



□ RS: Knit
 ● WS: Purl
 ▽ RS: Purl
 WS: Knit
 RS: Knit
 WS: Slip 1 stitch purlwise with yarn in front
 2/2 LC
 2/2 RC



Knit Blanket Square



Stranded by the Sea

**Designed by
Tara Roberts**

Blanket Square Size: 10" x 10"
(25.4 x 25.4 cm)

Yarn: any DK, light worsted weight, or equivalent yarn (i.e. fingering weight held double) that makes gauge.

Recommended Needle: US 6 (4 mm) or size needed to achieve gauge.

Gauge: 20 sts and 40 rows over 4" (10cm) in garter stitch.

Supplies: tapestry needle, stitch markers

Special Abbreviations

This is a list of the special abbreviations. Please refer to [Knitting Abbreviations Master List by the Craft Yarn Council](#)

k – knit

RS – Right Side

st (sts) – stitch (stitches)

w&t - wrap and turn

* * repeat instructions inside asterisks

Sample was made with Stranded Studio Narwhal (100g), 100% Superwash Merino, in two contrasting colors:
35g in Main Color: Aqueous Dark
25g in Contrast Color: Aqueous Pale

Special Instructions

w&t - wrap and turn: with yarn in back, slip the next stitch purlwise from the left needle to the right needle, bring the yarn to front, slip stitch back to the left needle, and turn the work.

Notes

This pattern is worked in garter stitch with short rows. Wrap and turns do not need to be resolved.

Yarns may be carried up the right-side edge to make alternating colors between sections easy.

If using stitch markers, it may be helpful to place them after first 2 right-edge stitches, then after every 9 stitches to separate short row segments, leaving 2 left-edge stitches.

The pattern has been written to create a balanced and structurally stable fabric. A slight curve or ripples in the fabric may result. Wet blocking and pinning to dry should smooth and straighten the edges sufficiently to create a square block.

Pattern Instructions

With Main Color, cast on 49 sts using long-tail or preferred cast on method.

Knit 5 Rows.

(continued on next page...)

Work **Swell 1 Section** with Contrast Color as follows:

Row 6: (RS) Knit all sts.
Row 7: (WS) k3, w&t,
Row 8: (RS) knit to end,
Row 9: (WS) k4, w&t,
Row 10: (RS) knit to end,
Row 11: (WS) k5, w&t,
Row 12: (RS) knit to end,
Row 13: (WS) k6, w&t,
Row 14: (RS) knit to end,
Row 15: (WS) k11, do not turn.

Swell 1: (WS) k10, w&t,
(RS) k2, w&t,
(WS) k3, w&t,
(RS) k4, w&t,
(WS) k5, w&t,
(RS) k6, w&t,
(WS) k7, w&t,
(RS) k8, w&t,
(WS) k13, do not turn.

Repeat Swell 1, and then knit to end.

Row 16 - 19: With Main Color, knit all sts.

Work **Swell 2 Section** with Contrast Color as follows:

Row 20: (RS) Knit all sts.
Row 21: (WS) k11, do not turn.

Swell 2: (WS) k5, w&t,
(RS) k1, w&t,
(WS) k2, w&t,
(RS) k3, w&t,
(WS) k4, w&t,
(RS) k5, w&t,
(WS) k6, w&t,
(RS) k7, w&t,
(WS) k17, do not turn.

Repeat Swell 2, and then knit to end.

Row 22 - 25: With Main Color, knit all sts.

With Main Color, knit 1 more row and then work standard knit bind off on wrong side.

Weave in ends and block to 10" x 10" square. Enjoy!

Work **Swell 3 Section** with Contrast Color as follows:

Row 26: (RS) Knit all sts.
Row 27: (WS) k2, do not turn
Swell 3: (WS) k8, w&t,
(RS) k7, w&t,
(WS) k6, w&t,
(RS) k5, w&t,
(WS) k4, w&t,
(RS) k3, w&t,
(WS) k2, w&t,
(RS) k1, w&t,
(WS) k5, do not turn.

(WS) * k9, do not turn, Repeat Swell 3,
repeat from * one more time, and then
knit to end.

Row 28 - 31: With Main Color, knit all sts knit all sts c.

Work **Swell 4 Section** with Contrast Color as follows:

Row 32: (RS) Knit all sts.
Row 33: (WS) k2, do not turn
Swell 4: (WS) k13, w&t,
(RS) k8, w&t,
(WS) k7, w&t,
(RS) k6, w&t,
(WS) k5, w&t,
(RS) k4, w&t,
(WS) k3, w&t,
(RS) k2, w&t,
(WS) k10, do not turn.

Repeat Swell 4, and then knit to end.

Row 34: (RS) k6, w&t,
Row 35: (WS) knit to end,
Row 36: (RS) k5, w&t,
Row 37: (WS) knit to end,
Row 38: (RS) k4, w&t,
Row 39: (WS) knit to end,
Row 40: (RS) k3, w&t,
Row 41: (WS) knit to end.

Row 42 - 45: With Main Color, knit all sts.

Repeat Rows 6 - 45 two more times.

Swell 4 Section >>

Swell 3 Section >>

Swell 2 Section >>

Swell 1 Section >>





Knit Blanket Square

STRIKKE
YARN & SUPPLY

Strikke Yarn & Supply

Designed by
Lindsay Christiansen

Blanket Square Size: 10" x 10"
(25.4 x 25.4 cm)

Yarn: any DK, light worsted weight, or equivalent yarn (i.e. fingering weight held double) that makes gauge.

Recommended Needle: US 6 (4 mm) or size needed to achieve gauge.

Gauge: 20 sts and 40 rows over 4" (10cm) in pattern.

Supplies: cable needle, tapestry needle, stitch markers

Special Abbreviations

This is a list of the special abbreviations. Please refer to [Knitting Abbreviations Master List by the Craft Yarn Council](#)

C4B – Cable 4 Back

k – knit

p – purl

RS – Right Side

st (sts) – stitch (stitches)

T4B – Twist 4 Back

T4F – Twist 4 Front

WS - Wrong Side

Sample was made with Sandnes Garn: Double Sunday.

Special Stitches

Cable 4 Back (C4B) – Slip next 2 sts to cable needle and hold to back, k2 from left needle, k2 from cable needle.

Twist 4 Back (T4B) – Slip next 2 sts on cable needle and hold to back, k2 from left needle, p2 from cable needle.

Twist 4 Front (T4F) – Slip next 2 sts on cable needle and hold at front, p2 from left needle, k2 from cable needle.

Pattern Instructions

Cast on 50 stitches with long tail or preferred cast on method.

Knit 8 rows.

Row 1 (RS): K4, p3, C4B, *p4, C4B, repeat from * to last 7 sts, p3, k4.

Row 2 (WS): K7, p4, *k4, p4, repeat from * to the last 7 sts, k7.

Row 3: K4, p1, *T4B, T4F, repeat from * to last 5 sts, p1, k4.

Row 4: K5, p2, k4, *p4, k4, repeat from * to the last 7 sts, p2, k5.

Row 5: K4, p1, k2, p4, *C4B, p4, repeat from * to last 7 sts, k2, p1, k4.

Row 6: Repeat Row 4.

Row 7: K4, p1, *T4F, T4B, repeat from * to last 5 sts, p1, k4.

Row 8: Repeat Row 2.

Repeat Rows 1 – 8 eight times total.

Knit 8 rows.

Bind off all stitches.

Weave in ends and block to 10" x 10" square. Enjoy!



Knit Blanket Square



The Knitters Studio

**Designed by
Rene Dickey**

Blanket Square Size: 10" x 10"
(25.4 x 25.4 cm)

Yarn: any DK, light worsted weight, or equivalent yarn (i.e. fingering weight held double) that makes gauge.

Recommended Needle: US 6 (4 mm) or size needed to achieve gauge.

Gauge: 20 sts and 28 rows over 4" (10cm) in Butterfly Stitch Pattern.

Supplies: tapestry needle, stitch markers

Special Abbreviations

This is a list of the special abbreviations. Please refer to [Knitting Abbreviations Master List by the Craft Yarn Council](#)

k – knit

p – purl

RS – Right Side

sl5 wyif – slip 5 stitches with yarn in front

st (sts) – stitch (stitches)

WS – Wrong Side

Sample was made with Polka Dot Sheep Stumptown DK.

Pattern Instructions

Cast on 50 stitches using long-tail or preferred cast on method.

Knit 7 rows.

Begin Butterfly Stitch Pattern:

Rows 1, 3, 5, 7, 9 (RS): K5, *sl5 wyif, k5, repeat from * to last 5 sts, k5.

Rows 2, 4, 6, 8 (WS): K4, purl to last 4 sts, k4.

Row 10 (WS): K4, p8, *bring right needle down through the 5 rows of floats and place them on the left-hand needle, p these 5 sts together with the next st, p9, repeat from * to last 8 sts, bring right needle down through the 5 rows of floats and place them on the left-hand needle, p these 5 sts together with the next st, p3, k4.

Rows 11, 13, 15, 17, 19 (RS): K10, *sl5 wyif, k5, repeat from * to end of row.

Rows 12, 14, 16, 18 (WS): K4, purl to last 4 sts, k4.

Row 20 (WS): K4, *p3, bring right needle down through the 5 rows of floats and place them on the left-hand needle, p these 5 sts together with the next st, p9, repeat from * to last 13 sts, bring right needle down through the 5 rows of floats and place them on the left-hand needle, p these 5 sts together with the next st, p8, k4.

Repeat Rows 1 - 20 until work measures 9" (22.5 cm) from cast on row ending with Row 10 or 20.

(continued on next page...)

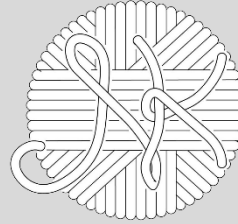
Knit 8 rows.

Bind off all stitches.

Weave in ends and block to 10" x 10" square. Enjoy!



Knit Blanket Square



The New Knittery

Designed by
Marcy New

Blanket Square Size: 10x10"
(25.4 x 25.4 cm)

Yarn: any DK, light worsted weight, or equivalent yarn (i.e. fingering weight held double) that makes gauge.

Recommended Needle: US 6 (4 mm) or size needed to achieve gauge.

Gauge: 20 sts over 4" (10cm)
in stockinette.

Supplies: tapestry needle, stitch markers

Special Abbreviations

This is a list of the special abbreviations. Please refer to [Knitting Abbreviations Master List by the Craft Yarn Council](#)

k – knit

k2tog – knit two together

p – purl

ssk – slip slip knit

st (sts) – stitch (stitches)

yo – yarn over

Sample was made with HiKoo Sueno.

Pattern Instructions

Cast on 57 stitches using long-tail or preferred cast on method.

Knit 4 rows.

Split Leaf Pattern

Row 1 (RS): K4, p1, *k2tog, k3, yo, k1, yo, k3, ssk, p1, repeat from * to last 4 sts, k4.

Rows 2, 4, 6, & 8 (WS): K4, *k1, p11, repeat from * to last 5 sts, k5.

Row 3: K4, p1, *k2tog, k2, yo, k3, yo, k2, ssk, p1, repeat from * to last 4 sts, k4.

Row 5: K4, p1, *k2tog, k1, yo, k5, yo, k1, ssk, p1, repeat from * to last 4 sts, k4.

Row 7: K4, p1, *k2tog, yo, k7, yo, ssk, p1, repeat from * to last 4 sts, k4.

Row 9: K5, *yo, k3, ssk, p1, k2tog, k3, yo, k1, repeat from * to last 4 sts, k4.

(continued on next page...)

Rows 10, 12, 14 & 16: K4, *p6, k1, p5, repeat from * to last 5 sts, p1, k4.

Row 11: K5, *k1, yo, k2, ssk, p1, k2tog, k2, yo, k2, repeat from * to last 4 sts, k4.

Row 13: K5, *k2, yo, k1, ssk, p1, k2tog, k1, yo, k3, repeat from * to last 4 sts, k4.

Row 15: K5, *k3, yo, ssk, p1, k2tog, yo, k4, repeat from * to last 4 sts, k4.

Work Rows 1 – 16 of Split Leaf Pattern a total of five times.

Knit 4 rows.

Bind off all stitches.

Weave in ends and block to 10" x 10" square. Enjoy!



Knit Blanket Square



The Nifty Knitter

Designed by
Sarah Dobbins

Blanket Square Size: 10" x 10"
(25.4 x 25.4 cm)

Yarn: any DK, light worsted weight, or equivalent yarn (i.e. fingering weight held double) that makes gauge.

Recommended Needle: US 6 (4 mm) or size needed to achieve gauge.

Gauge: 20 sts x 27 rows over 4" (10cm) in stockinette.

Supplies: tapestry needle, stitch markers

Special Abbreviations

This is a list of the special abbreviations. Please refer to [Knitting Abbreviations Master List by the Craft Yarn Council](#)

k – knit

p – purl

RS – Right Side

st (sts) – stitch (stitches)

WS – Wrong Side

Sample was made with Cascade 220 Superwash.

Notes

Instructions within parentheses () should be repeated as many times as indicated.

Pattern Instructions

Cast on 51 stitches using long-tail or preferred cast on method.
Knit 7 rows.

Row 8 (RS): K7, (p1, k3) eleven times, k4.

Row 9 (WS): K4, p3, (k1, p3) eleven times, k4

Row 10: Repeat Row 8.

Row 11: Knit.

Repeat Rows 8 – 11 until square is about 9.25".

Knit 7 rows.

Bind off all stitches.

Weave in ends and block to 10" x 10" square. Enjoy!



Knit Blanket Square



The Tea Cozy Yarn Shop

Designed by
Emily Keller

Blanket Square Size: 10" x 10"
(25.4 x 25.4 cm)

Yarn: any DK, light worsted weight, or equivalent yarn (i.e. fingering weight held double) that makes gauge.

Recommended Needle: US 6 (4 mm) or size needed to achieve gauge.

Gauge: 20 sts and 28 rows over 4" (10cm) in pattern.

Supplies: tapestry needle, stitch markers

Special Abbreviations

This is a list of the special abbreviations. Please refer to [Knitting Abbreviations Master List by the Craft Yarn Council](#)

k – knit

p – purl

st (sts) – stitch (stitches)

Pattern Instructions

Cast on 48 stitches with long tail or preferred cast on method.

Knit 4 rows in garter.

Stitch Repeat:

Row 1: K4, *k1, p1, repeat from * to last 4 sts, k4.

Row 2: K4, *k1, p1, repeat from * to last 4 sts, k4.

Row 3: K4, *p1, k3, repeat from * to last 4 sts, k4.

Row 4: K4, *p3, k1, repeat from * to last 4 sts, k4.

Row 5: K4, *k1, p1, repeat from * to last 4 sts, k4.

Row 6: K4, *k1, p1, repeat from * to last 4 sts, k4.

Row 7: K4, *k2, p1, k1, repeat from * to last 4 sts, k4.

Row 8: K4, *p1, k1, p2, repeat from * to last 4 sts, k4.

Repeat Rows 1 – 8 until square measures 9.5".

Knit 4 rows in garter.

Bind off all stitches.

Weave in ends and block to 10" x 10" square. Enjoy!



Knit Blanket Square

THE YARN OUTFITTER



YARN • FIBER • TOOLS • GIFTS

Designed by Sarah Dobbins

Blanket Square Size: 10" x 10"
(25.4 x 25.4 cm)

Yarn: any DK, light worsted weight, or equivalent yarn (i.e. fingering weight held double) that makes gauge.

Recommended Needle: US 6 (4 mm) or size needed to achieve gauge.

Gauge: 20 sts and 27 rows over 4" (10cm) in stockinette blocked.

Supplies: tapestry needle, stitch markers

Special Abbreviations

This is a list of the special abbreviations. Please refer to [Knitting Abbreviations Master List by the Craft Yarn Council](#)

1/2 RCM – 1 over 2 right cross cable modified

k – knit

p – purl

RS – Right Side

st (sts) – stitch (stitches)

WS – Wrong Side

Sample was made with Cascade 220 Superwash.

Special Instructions

1/2 RCM - one stitch right cross over two stitches cable modified.

To get the desired look, this cable is done without a cable needle as follows: knit into the third stitch on the left-hand needle, drawing up a loop, knit the first stitch, knit the second stitch, drop the rest of the third stitch from the left-hand needle.

Pattern Instructions

Cast on 51 stitches with long tail or preferred cast on method.

Knit 7 rows.

Row 8 (RS): Knit.

Row 9 (WS): K4, purl to last 4 sts, k4.

Row 10: Knit.

Row 11: K4, purl to last 4 sts, k4.

Row 12: K9, (1/2 RCM, k3) 6 times, k6.

Row 13: K4, purl to last 4 sts, k4.

Row 14: K6, (1/2 RCM, k3) 6 times, 1/2 RCM, k6.

Row 15: K4, purl to last 4 sts, k4.

Rows 16 – 19: Repeat Row 14 and 15 twice more.

Rows 20 – 25: repeat Row 12 and 13 three times.

Rows 26 – 31: Repeat Row 14 and 15 three times.

(continued on next page...)

Rows 32 – 37: Repeat Row 12 and 13 three times.

Rows 38 – 43: Repeat Row 14 and 15 three times.

Rows 44 – 49: Repeat Row 12 and 13 three times.

Rows 50 – 55: Repeat Row 14 and 15 three times.

Rows 56 – 57: Repeat Row 12 and 13.

Row 58 – 59: Repeat Row 8 and 9.

Knit 7 rows.

Bind off all stitches.

Weave in ends and block to 10" x 10" square. Enjoy!



Knit Blanket Square



WildFibers - Designed by Brooke Jones

Blanket Square Size: 10" x 10"
(25.4 x 25.4 cm)

Yarn: any DK, light worsted weight, or equivalent yarn (i.e. fingering weight held double) that makes gauge.

Recommended Needle: US 6 (4 mm) or size needed to achieve gauge.

Gauge: 22 sts and 28 rows over 4" (10cm) in stockinette.

Supplies: tapestry needle, stitch markers

Special Abbreviations

This is a list of the special abbreviations. Please refer to [Knitting Abbreviations Master List by the Craft Yarn Council](#)

k – knit
p – purl
sm – slip marker
st (sts) – stitch (stitches)

Sample was made with Berroco Vintage Baby Yarn.

Notes

Both sides of this square are attractive, you might choose to display with wrong side facing.

Pattern Instructions

Cast on 51 stitches using long-tail or preferred cast on method. This serves as Row 1 of the Tulip Chart.

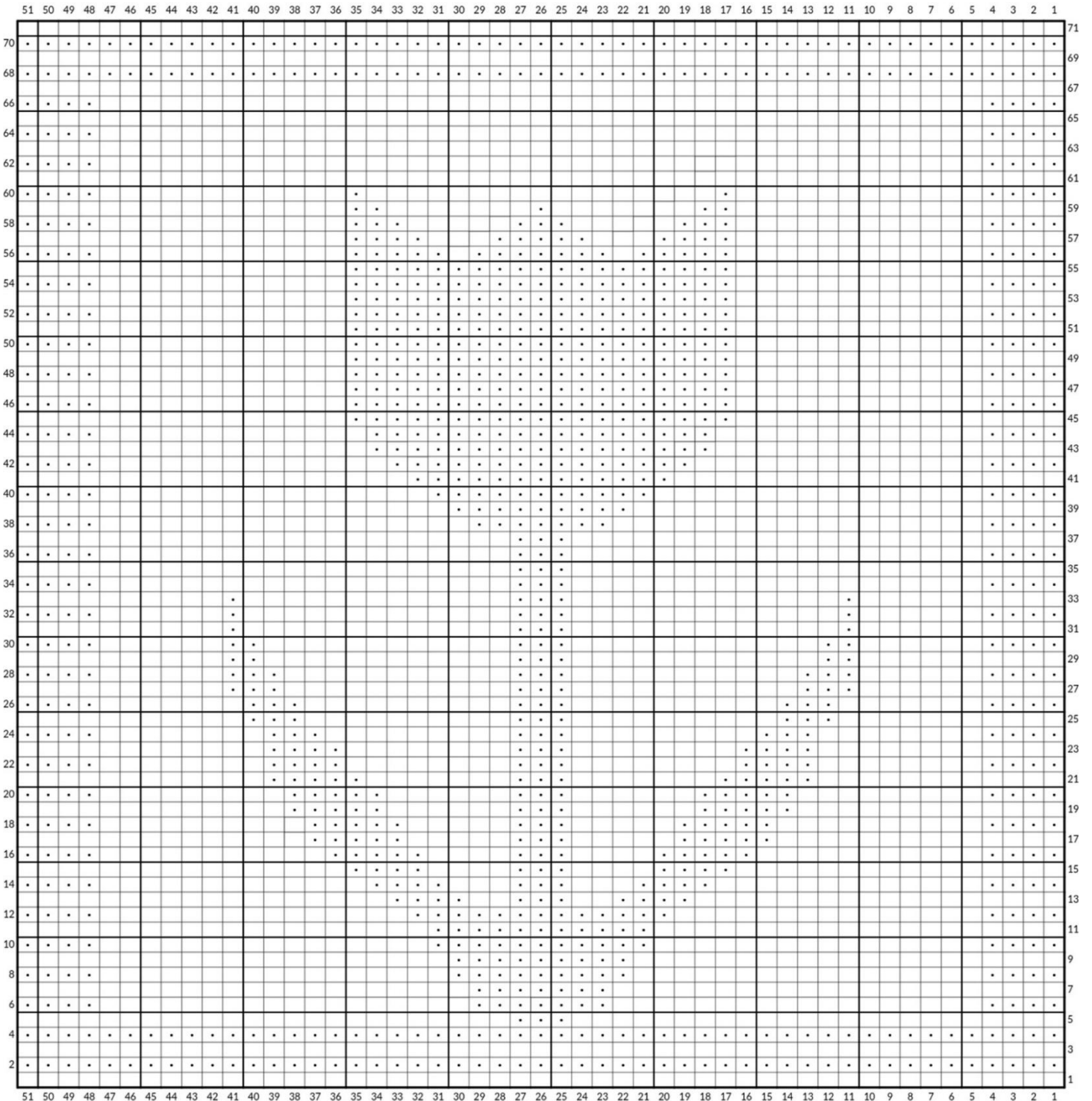
Work entire chart as indicated, reading from right to left on right side/odd numbered rows and from left to right on wrong side/even numbered rows.

On row 71, the last row of the Tulip Chart, bind off knit-wise.

Weave in ends and block to 10" x 10" square. Enjoy!

☐ knit on right side, purl on wrong side

● purl on right side, knit on wrong side



Created on chart-minder.com



Knit Blanket Square



Yarn Dragon

**Designed by
Karen Berner**

Blanket Square Size: 10" x 10"
(25.4 x 25.4 cm)

Yarn: any DK, light worsted weight, or equivalent yarn (i.e. fingering weight held double) that makes gauge.

Recommended Needle: US 6 (4 mm) or size needed to achieve gauge.

Gauge: 20 sts and 28 rows over 4" (10cm) in pattern, worked flat.

Supplies: cable needle, tapestry needle, stitch markers

Special Abbreviations

This is a list of the special abbreviations. Please refer to [Knitting Abbreviations Master List by the Craft Yarn Council](#)

2/2 RC – 2 over 2 right cross cable
2/2 LC – 2 over 2 left cross cable
2/1 RPC – 2 over 1 right purl cross cable
2/1 LPC – 2 over 1 left purl cross cable
3/3 RPC – 3 over 3 right purl cross cable
3/3 PRC – 3 over 3 purl right cross cable
3/3 LPC – 3 over 3 left purl cross cable
3/3 PLC – 3 over 3 purl left cross cable
cn – cable needle
K – knit
P – purl
RS – Right Side
sl – slip stitch
st (sts) – stitch (stitches)
WS – Wrong Side

Sample was made with Yarn Dragon Retro DK in Color: Capitol Hill.

Special Stitches

2/2 RC – Sl 2 sts to cn and hold to back, k2, k2 from cn.
2/2 LC – Sl 2 sts to cn and hold to front, k2, k2 from cn.
2/1 RPC – Sl 1 st to cn and hold to back, k2, p1 from cn.
2/1 LPC – Sl 2 sts to cn and hold to front, p1, k2 from cn.
3/3 RPC – Sl 3 sts to cn and hold to back, k3, p3 from cn.
3/3 PRC – Sl 3 sts to cn and hold to back, p3, k3 from cn.
3/3 LPC – Sl 3 sts to cn and hold to front, p3, k3 from cn.
3/3 PLC – Sl 3 sts to cn and hold to front, k3, p3 from cn.

Notes

Pattern provided in both written instructions and charted.
Chart on Page 4.

Pattern Instructions

Cast on 52 stitches using the German twisted cast on method.
Knit 6 rows.

Row 7 (RS): K4, P2, K3, P6, 2/2 RC, P2, 2/2 RC, P2, 2/2 RC, P2,
2/2 RC, P6, K3, P2, K4.

Row 8 (WS): K6, P6, K3, P4, K2, P4, K2, P4, K2, P4, K3, P6, K6.

(continued on next page...)

Row 9 (RS): K4, P2, K3, P5, 2/1 RPC, 2/1 LPC, 2/1 RPC, 2/1 LPC, 2/1 RPC, 2/1 LPC, 2/1 RPC, 2/1 LPC, P5, K3, P2, K4.

Row 10 (WS): K6, P6, K2, P2, K2, P4, K2, P4, K2, P4, K2, P2, K2, P6, K6.

Row 11 (RS): K4, P2, K3, P5, K2, P2, 2/2 LC, P2, 2/2 LC, P2, 2/2 LC, P2, K2, P5, K3, P2, K4.

Row 12 (WS): K6, P6, K2, P2, K2, P4, K2, P4, K2, P4, K2, P2, K2, P6, K6.

Row 13 (RS): K4, P2, K3, P5, 2/1 LPC, 2/1 RPC, 2/1 LPC, 2/1 RPC, 2/1 LPC, 2/1 RPC, 2/1 LPC, 2/1 RPC, P5, K3, P2, K4.

Row 14 (WS): K6, P6, K3, P4, K2, P4, K2, P4, K2, P4, K3, P6, K6.

Row 15 (RS): K4, P2, 3/3 LPC, P3, 2/2 RC, P2, 2/2 RC, P2, 2/2 RC, P2, 2/2 RC, P3, 3/3 RPC, P2, K4.

Row 16 (WS): K6, P6, K3, P4, K2, P4, K2, P4, K2, P4, K3, P6, K6.

Row 17 (RS): K4, P5, K3, P2, 2/1 RPC, 2/1 LPC, 2/1 RPC, 2/1 LPC, 2/1 RPC, 2/1 LPC, 2/1 RPC, 2/1 LPC, P2, K3, P5, K4.

Row 18 (WS): K6, P6, K2, P2, K2, P4, K2, P4, K2, P4, K2, P2, K2, P6, K6.

Row 19 (RS): K4, P5, K3, P2, K2, P2, 2/2 LC, P2, 2/2 LC, P2, 2/2 LC, P2, K2, P2, K3, P5, K4.

Row 20 (WS): K6, P6, K2, P2, K2, P4, K2, P4, K2, P4, K2, P2, K2, P6, K6.

Row 21 (RS): K4, P5, K3, P2, 2/1 LPC, 2/1 RPC, 2/1 LPC, 2/1 RPC, 2/1 LPC, 2/1 RPC, 2/1 LPC, 2/1 RPC, P2, K3, P5, K4.

Row 22 (WS): K6, P6, K3, P4, K2, P4, K2, P4, K2, P4, K3, P6, K6.

Row 23 (RS): K4, P5, K3, P3, 2/2 RC, P2, 2/2 RC, P2, 2/2 RC, P2, 2/2 RC, P3, K3, P5, K4.

Row 24 (WS): K6, P6, K3, P4, K2, P4, K2, P4, K2, P4, K3, P6, K6.

Row 25 (RS): K4, P2, 3/3 PLC, P2, 2/1 RPC, 2/1 LPC, 2/1 RPC, 2/1 LPC, 2/1 RPC, 2/1 LPC, 2/1 RPC, 2/1 LPC, P2, 3/3 PRC, P2, K4.

Row 26 (WS): K6, P6, K2, P2, K2, P4, K2, P4, K2, P4, K2, P2, K2, P6, K6.

Row 27 (RS): K4, P2, K3, P5, K2, P2, 2/2 LC, P2, 2/2 LC, P2, 2/2 LC, P2, K2, P5, K3, P2, K4.

Row 28 (WS): K6, P6, K2, P2, K2, P4, K2, P4, K2, P4, K2, P2, K2, P6, K6.

Row 29 (RS): K4, P2, K3, P5, 2/1 LPC, 2/1 RPC, 2/1 LPC, 2/1 RPC, 2/1 LPC, 2/1 RPC, 2/1 LPC, 2/1 RPC, P5, K3, P2, K4.

Row 30 (WS): K6, P6, K3, P4, K2, P4, K2, P4, K2, P4, K3, P6, K6.

Row 31 (RS): K4, P2, K3, P6, 2/2 RC, P2, 2/2 RC, P2, 2/2 RC, P2, 2/2 RC, P6, K3, P2, K4.

Row 32 (WS): K6, P6, K3, P4, K2, P4, K2, P4, K2, P4, K3, P6, K6.

Row 33 (RS): K4, P2, K3, P5, 2/1 RPC, 2/1 LPC, 2/1 RPC, 2/1 LPC, 2/1 RPC, 2/1 LPC, 2/1 RPC, 2/1 LPC, P5, K3, P2, K4.

Row 34 (WS): K6, P6, K2, P2, K2, P4, K2, P4, K2, P4, K2, P2, K2, P6, K6.

Row 35 (RS): K4, P2, 3/3 LPC, P2, K2, P2, 2/2 LC, P2, 2/2 LC, P2, 2/2 LC, P2, K2, P2, 3/3 RPC, P2, K4.

Row 36 (WS): K6, P6, K2, P2, K2, P4, K2, P4, K2, P4, K2, P2, K2, P6, K6.

Row 37 (RS): K4, P5, K3, P2, 2/1 LPC, 2/1 RPC, 2/1 LPC, 2/1 RPC, 2/1 LPC, 2/1 RPC, 2/1 LPC, 2/1 RPC, P2, K3, P5, K4.

Row 38 (WS): K6, P6, K3, P4, K2, P4, K2, P4, K2, P4, K3, P6, K6.

Row 39 (RS): K4, P5, K3, P3, 2/2 RC, P2, 2/2 RC, P2, 2/2 RC, P2, 2/2 RC, P3, K3, P5, K4.

Row 40 (WS): K6, P6, K3, P4, K2, P4, K2, P4, K2, P4, K3, P6, K6.

Row 41 (RS): K4, P5, K3, P2, 2/1 RPC, 2/1 LPC, 2/1 RPC, 2/1 LPC, 2/1 RPC, 2/1 LPC, 2/1 RPC, 2/1 LPC, P2, K3, P5, K4.

Row 42 (WS): K6, P6, K2, P2, K2, P4, K2, P4, K2, P4, K2, P2, K2, P6, K6.

Row 43 (RS): K4, P5, K3, P2, K2, P2, 2/2 LC, P2, 2/2 LC, P2, 2/2 LC, P2, K2, P2, K3, P5, K4.

Row 44 (WS): K6, P6, K2, P2, K2, P4, K2, P4, K2, P4, K2, P2, K2, P6, K6.

(continued on next page...)

Row 45 (RS): K4, P2, 3/3 PLC, P2, 2/1 LPC, 2/1 RPC, 2/1 LPC, 2/1 RPC, 2/1 LPC, 2/1 RPC, 2/1 LPC, 2/1 RPC, P2, 3/3 PRC, P2, K4.

Row 46 (WS): K6, P6, K3, P4, K2, P4, K2, P4, K2, P4, K3, P6, K6.

Row 47 (RS): K4, P2, K3, P6, 2/2 RC, P2, 2/2 RC, P2, 2/2 RC, P2, 2/2 RC, P6, K3, P2, K4.

Row 48 (WS): K6, P6, K3, P4, K2, P4, K2, P4, K2, P4, K3, P6, K6.

Row 49 (RS): K4, P2, K3, P5, 2/1 RPC, 2/1 LPC, 2/1 RPC, 2/1 LPC, 2/1 RPC, 2/1 LPC, 2/1 RPC, 2/1 LPC, P5, K3, P2, K4.

Row 50 (WS): K6, P6, K2, P2, K2, P4, K2, P4, K2, P4, K2, P2, K2, P6, K6.

Row 51 (RS): K4, P2, K3, P5, K2, P2, 2/2 LC, P2, 2/2 LC, P2, 2/2 LC, P2, K2, P5, K3, P2, K4.

Row 52 (WS): K6, P6, K2, P2, K2, P4, K2, P4, K2, P4, K2, P2, K2, P6, K6.

Row 53 (RS): K4, P2, K3, P5, 2/1 LPC, 2/1 RPC, 2/1 LPC, 2/1 RPC, 2/1 LPC, 2/1 RPC, 2/1 LPC, 2/1 RPC, P5, K3, P2, K4.

Row 54 (WS): K6, P6, K3, P4, K2, P4, K2, P4, K2, P4, K3, P6, K6.

Row 55 (RS): K4, P2, 3/3 LPC, P3, 2/2 RC, P2, 2/2 RC, P2, 2/2 RC, P2, 2/2 RC, P3, 3/3 RPC, P2, K4.

Row 56 (WS): K6, P6, K3, P4, K2, P4, K2, P4, K2, P4, K3, P6, K6.

Row 57 (RS): K4, P5, K3, P2, 2/1 RPC, 2/1 LPC, 2/1 RPC, 2/1 LPC, 2/1 RPC, 2/1 LPC, 2/1 RPC, 2/1 LPC, P2, K3, P5, K4.

Row 58 (WS): K6, P6, K2, P2, K2, P4, K2, P4, K2, P4, K2, P2, K2, P6, K6.

Row 59 (RS): K4, P5, K3, P2, K2, P2, 2/2 LC, P2, 2/2 LC, P2, 2/2 LC, P2, K2, P2, K3, P5, K4.

Row 60 (WS): K6, P6, K2, P2, K2, P4, K2, P4, K2, P4, K2, P2, K2, P6, K6.

Row 61 (RS): K4, P5, K3, P2, 2/1 LPC, 2/1 RPC, 2/1 LPC, 2/1 RPC, 2/1 LPC, 2/1 RPC, 2/1 LPC, 2/1 RPC, P2, K3, P5, K4.

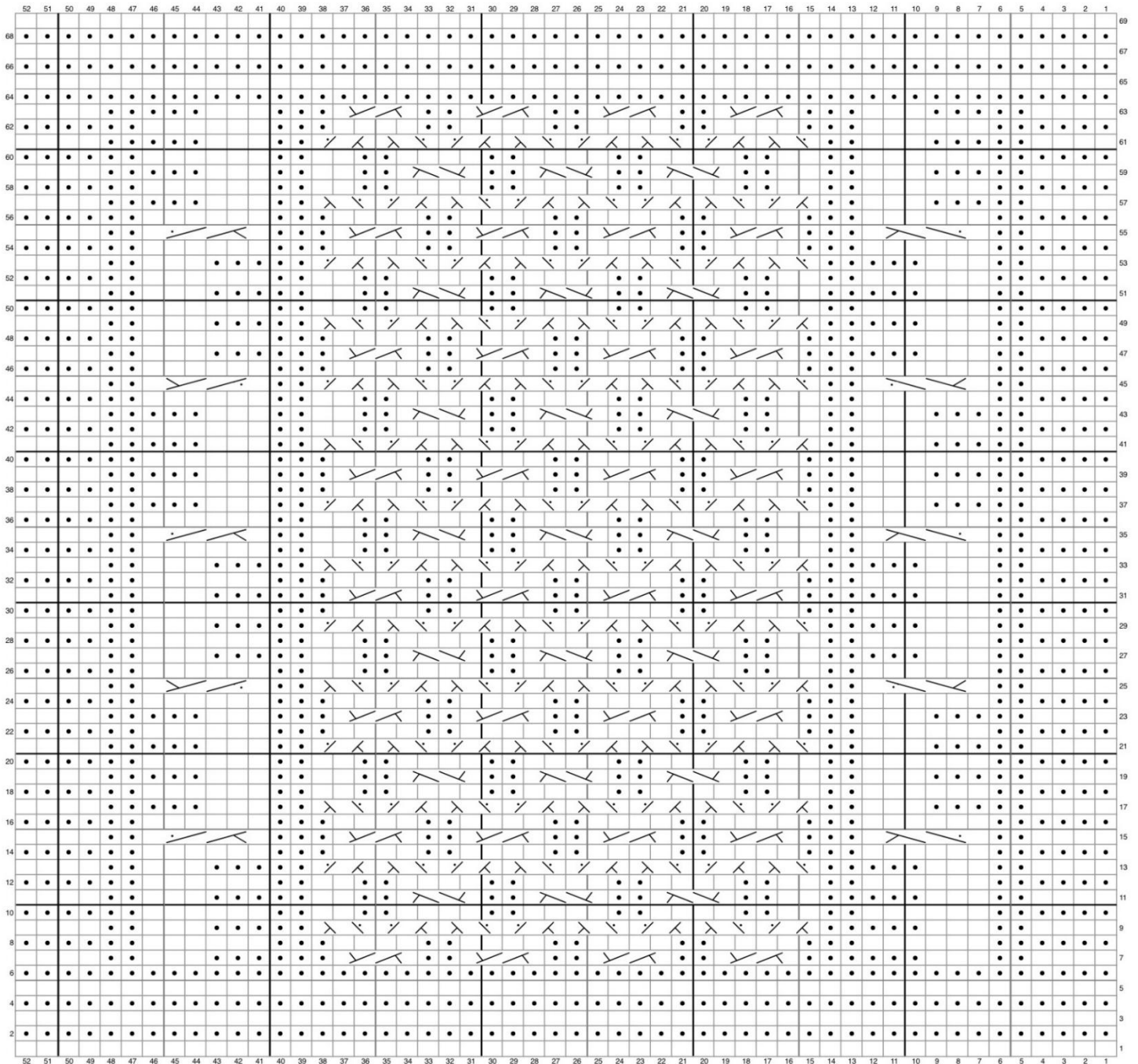
Row 62 (WS): K6, P6, K3, P4, K2, P4, K2, P4, K2, P4, K3, P6, K6.



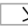
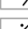
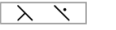

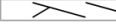




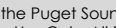
Row 63 (RS): K4, P5, K3, P3, 2/2 RC, P2, 2/2 RC, P2, 2/2 RC, P2, 2/2 RC, P3, K3, P5, K4.

Knit 6 rows.

Bind off all stitches.

Weave in ends and block to 10" x 10" square. Enjoy!



-  RS: Knit
-  WS: Purl
-  RS: Purl
-  WS: Knit
-  2/2 RC - Sl 2 sts to cn and hold to back, k2, k2 from cn
-  2/2 LC - Sl 2 sts to cn and hold to front, k2, k2 from cn
-  2/1 RPC - Sl 1 st to cn and hold to back, k2, p1 from cn
-  2/1 LPC - Sl 2 sts to cn and hold to front, p1, k2 from cn
-  3/3 RPC - Sl 3 sts to cn and hold to back, k3, p3 from cn
-  3/3 PRC - Sl 3 sts to cn and hold to back, p3, k3 from cn
-  3/3 LPC - Sl 3 sts to cn and hold to front, p3, k3 from cn
-  3/3 PLC - Sl 3 sts to cn and hold to front, k3, p3 from cn

PUGET SOUND LYS TOUR 2026



May 13 – 17, 2026

www.LYSTOUR.com