



Knit Blanket Square



All Wound Up

**Designed by
Allison Harding, Fleebers**

Blanket Square Size: 10" x10"
(25.4 x 25.4 cm)

Yarn: any DK, light worsted weight, or equivalent yarn (i.e. fingering weight held double) that makes gauge.

Recommended Needle: US 6 (4 mm) or size needed to achieve gauge.

Gauge: 20 sts and 26 rows over 4" (10cm) in Garter Stitch Blocked.

Supplies: tapestry needle, stitch markers

Special Abbreviations

This is a list of the special abbreviations. Please refer to [Knitting Abbreviations Master List by the Craft Yarn Council](#)

k – knit

kdw - knit with double wrap

pm – place marker

RS – Right Side

sl1 wyib – slip one stitch with yarn in back

Sl1 wyif – slip one stitch with yarn in front

sm – slip marker

st (sts) – stitch (stitches)

WS – Wrong Side

Sample was made with Polka Dot Sheep Stumptown DK in
Color 1: Dusty Road
Color 2: Aubergine

Special Instructions

kdw - knit with double wrap: Insert RH needle into stitch on LH needle knitwise, wrap yarn twice and pull through, leaving double stitch on RH needle, double wraps count as 1 st.

Double wrapped stitches create an elongated stitch. When first slipping the double wrapped stitch on the next row, drop one loop so it becomes a long, single stitch. The stitch count doesn't change.

Notes

There are no purls used in this design. Only one color is used per row. Do not break yarn when changing colors, simply carry up the edge, bring the new yarn up under the old yarn. Chart on Page 3.

Pattern Instructions

Border and Set-up - With Color 1:

Cast on 51 stitches using long-tail or preferred cast on method.
Knit 7 rows.

Row 8 (Set-up): K4, pm, (kdw, k5) repeat to last 5 sts, kdw, pm, k4. (51 stitches, double wraps count as 1 st)

Drop Color 1 and begin Color 2, carrying yarns up the edge.

(continued on next page...)

MAIN BODY

With Color 2:

Row 9 (RS): K4, sm, [sl1 wyib (dropping extra loop), k5] repeat to last 5 sts, sl1 wyib (dropping extra loop), sm, K4. (51 stitches)

Row 10 (WS): K4, sm, (sl1 wyif, k5) repeat to last 5 sts, sl1 wyif, sm, k4.

Row 11: K4, sm, (sl1 wyib, k5) repeat to last 5 sts, sl1 wyib, sm, k4.

Row 12: K4, sm, (sl1 wyif, k5) repeat to last 5 sts, sl1 wyif, sm, k4.

Row 13: K4, sm, (sl1 wyib, k5) repeat to last 5 sts, sl1 wyib, sm, k4.

Row 14: K4, sm, (sl1 wyif, k2, kdw, k2) repeat to last 5 sts, sl1 wyif, sm, k4.

Drop Color 2 and pick up Color 1.

With Color 1:

Row 15 (RS): K4, sm, k3, [sl1 wyib (dropping extra loop), k5] repeat to last 8 sts, sl1 wyib (dropping extra loop), k3, sm, k4. (51 stitches)

Row 16 (WS): K4, sm, k3, (sl1 wyif, k5) repeat to last 8 sts, sl1 wyib, k3, sm, k4.

Row 17: K4, sm, k3, (sl1 wyib, k5) repeat to last 8 sts, sl1 wyif, k3, sm, k4.

Row 18: K4, sm, k3, (sl1 wyif, k5) repeat to last 8 sts, sl1 wyib, k3, sm, k4.

Row 19: K4, sm, k3, (sl1 wyib, k5) repeat to last 8 sts, sl1 wyif, k3, sm, k4.

Row 20: K4, sm, (kdw, k2, sl1 wyif, k2) repeat to last 5 sts, kdw, sm, k4.

Drop Color 1 and pick up Color 2.

Rows 21 - 80: Repeat Rows 9 - 20 five more times.

With Color 2:

Row 81 (RS): K4, sm, [sl1 wyib (dropping extra loop), k5] repeat to last 5 sts, sl1 wyib (dropping extra loop), sm, K4. (51 stitches)

Row 82 (WS): K4, sm, (sl1 wyif, k5) repeat to last 5 sts, sl1 wyif, sm, k4.

Row 83: K4, sm, (sl1 wyib, k5) repeat to last 5 sts, sl1 wyib, sm, k4.

Row 84: K4, sm, (sl1 wyif, k5) repeat to last 5 sts, sl1 wyif, sm, k4..

Row 85: K4, sm, (sl1 wyib, k5) repeat to last 5 sts, sl1 wyib, sm, k4.

Row 86: K4, sm, (sl1 wyif, k5) repeat to last 5 sts, sl1 wyif, sm, k4.

Drop Color 2 and pick up Color 1.

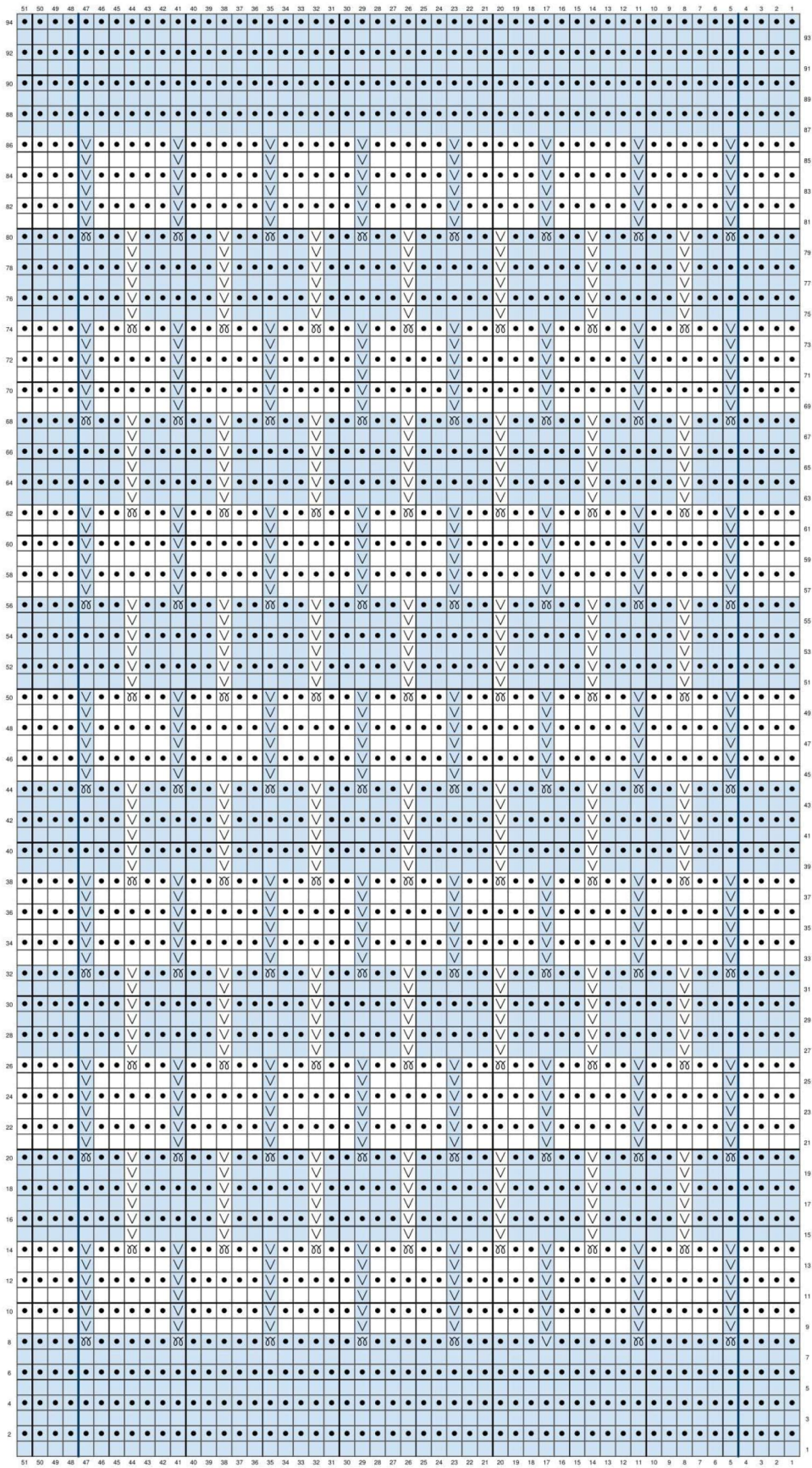
Finishing Border - With Color 1:

Row 87: Knit to end, removing all markers. (51 stitches)

Knit 7 rows.

Bind off all stitches.

Weave in ends and block to 10" x 10" square. Enjoy!



-  RS: Knit
WS: Purl
-  RS: Knit
WS: purl
-  RS: purl
WS: Knit
-  RS: Purl
WS: Knit
-  RS: Slip 1 stitch with yarn at back
WS: Slip 1 stitch with yarn in front
-  RS: Slip 1 stitch with yarn at back
WS: Slip 1 stitch purlwise with yarn in front
-  RS: insert as to purl wrap yarn twice around RH needle, pull through.
WS: insert as to purl wrap yarn twice around RH needle, pull through.
Drop extra wrap on next row to create elongated stitch
-  RS: insert as to purl wrap yarn twice around RH needle, pull through.
WS: insert as to purl wrap yarn twice around RH needle, pull through.
Drop extra wrap on next row to create elongated stitch
-  RS: border marker
WS: border marker