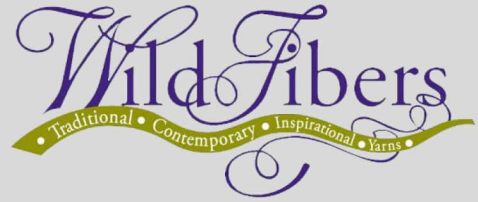




Knit Blanket Square



WildFibers - Designed by Brooke Jones

Blanket Square Size: 10" x 10"
(25.4 x 25.4 cm)

Yarn: any DK, light worsted weight, or equivalent yarn (i.e. fingering weight held double) that makes gauge.

Recommended Needle: US 6 (4 mm) or size needed to achieve gauge.

Gauge: 22 sts and 28 rows over 4" (10cm) in stockinette.

Supplies: tapestry needle, stitch markers

Special Abbreviations

This is a list of the special abbreviations. Please refer to [Knitting Abbreviations Master List by the Craft Yarn Council](#)

k – knit
p – purl
sm – slip marker
st (sts) – stitch (stitches)

Sample was made with Berroco Vintage Baby Yarn.

Notes

Both sides of this square are attractive, you might choose to display with wrong side facing.

Pattern Instructions

Cast on 51 stitches using long-tail or preferred cast on method. This serves as Row 1 of the Tulip Chart.

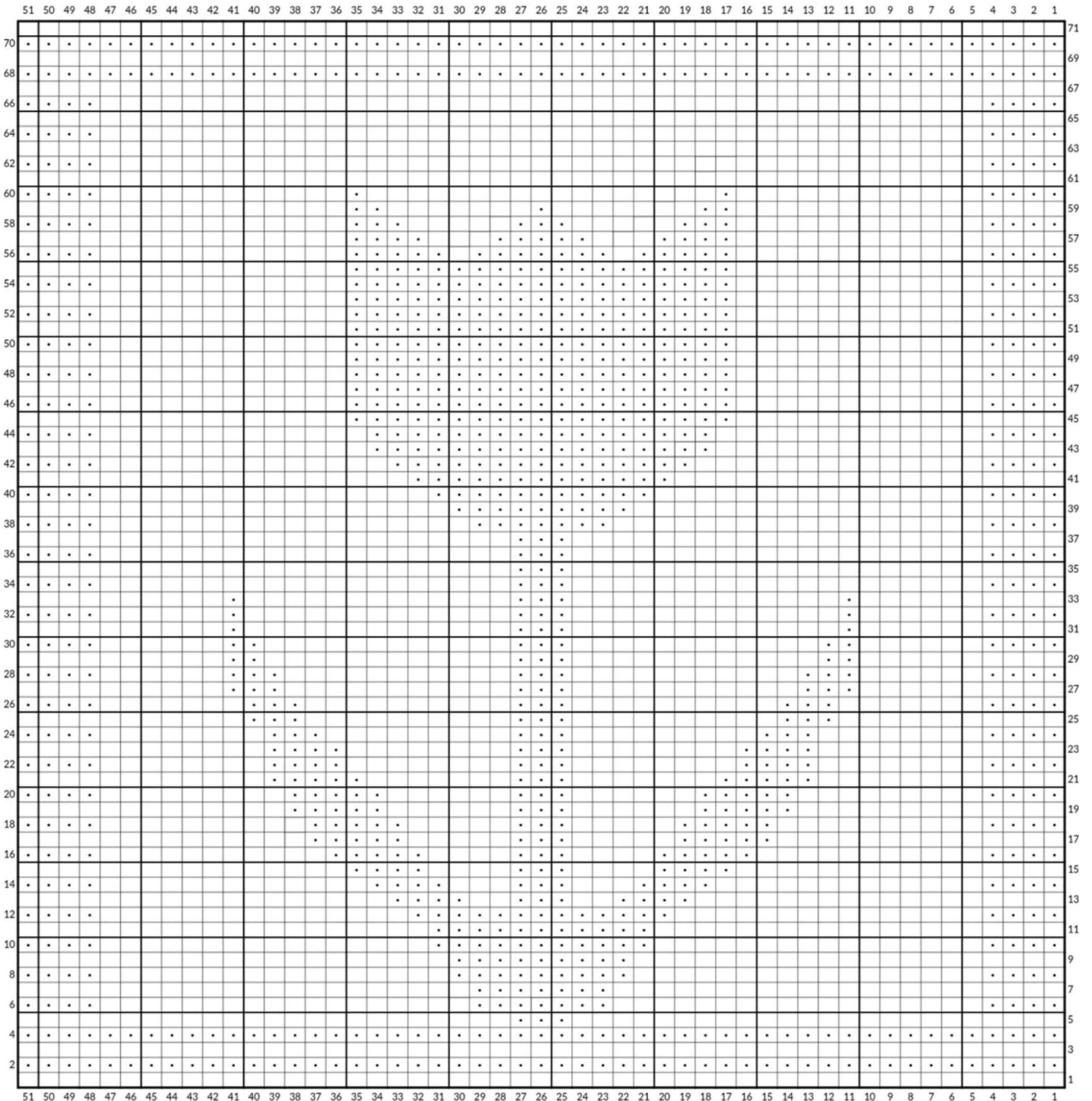
Work entire chart as indicated, reading from right to left on right side/odd numbered rows and from left to right on wrong side/even numbered rows.

On row 71, the last row of the Tulip Chart, bind off knit-wise.

Weave in ends and block to 10" x 10" square. Enjoy!

☐ knit on right side, purl on wrong side

● purl on right side, knit on wrong side



Created on chart-minder.com