



# Crochet Blanket Square



**All Wound Up**

**Designed by  
Erica Kallberg,  
Robotbee Designs**

**Blanket Square Size:** 10" x10"  
(25.4 x 25.4 cm)

**Yarn:** any DK, light worsted weight, or equivalent yarn (i.e. fingering weight held double) that makes gauge.

**Recommended Hook:** Size F (3.75mm) or size needed to achieve gauge.

**Gauge:** 8 sts and 8 row over 4" (10cm) in pattern stitch.

**Supplies:** tapestry needle, stitch markers

## Special Abbreviations

This is a list of the special abbreviations. Please refer to [Crochet Abbreviations Master List by the Craft Yarn Council](#)

ch – chain  
dc – double crochet  
EDC - extended double crochet  
HP-EDC - half puff extended double crochet  
sc – single crochet  
st (sts) – stitch (stitches)  
yo – yarn over

Sample was made with Polka Dot Sheep Stumptown DK in  
Approx. 26-27g (61 yds) of Color 1: Dusty Road  
Approx. 23-24g (54 yds) Color 2: Aubergine

## Special Instructions

Extended Double Crochet (EDC) - yo, insert hook into indicated stitch 2 rows below, yo and draw up a loop extending the leg of the stitch so it doesn't cinch the rows together, yo, pull through 2 loops, yo, pull through the last 2 loops.

Half Puff Extended Double Crochet (HP-EDC) - (yo, insert hook into indicated stitch 2 rows below, yo and draw up a loop extending the leg of the stitch so it doesn't cinch the rows together) repeat two times, yo, pull through 4 loops, yo, pull through the last 2 loops.

## Notes

Pattern is worked top down, Row 1 is the "top" of the square.

Ch1 and Ch2 at the beginning of a row does not count towards the stitch count for that row.

Ch2 is used at the beginning of dc rows, as it leaves less of a space at the edge to avoid gaps when making the SC border.

When making EDC and HP-EDC stitches over a ch, the stitch surrounds the ch (front and back) and is otherwise unworked.

Carry your inactive color through your end stitches/beginning chains for a neater appearance, this edge will be mostly hidden by the edging round.

Chart on Page 3.

(continued on next page...)

## Pattern for Gauge Swatch:

Note May swatch with just one color or with two colors to practice running your un-used color through the last stitch/beginning ch by alternating colors every 2 rows starting in row 4.

Ch 17.

Row 1: Starting in 2nd ch from the hook, sc in each stitch across, turn.

Row 2: Ch 2, dc in each sc across, turn.

Row 3: Ch 1, sc in each dc across, turn.

Rows 4 – 15: Repeat Rows 2 and 3.

Block and check gauge.

## Pattern Instructions

**Using Color 1**, Ch 40.

Row 1: Starting in the 2nd ch from the hook, sc 39, turn. (39 sc = 39 sts)

Row 2: Ch 2, \*dc 3, ch 1, skip the next sc, repeat from \* until 3 sts remain, dc in the last 3 sts, turn. (30 dc and 9 ch = 39 sts)

Row 3: Ch 1, sc in each stitch across, **change to Color 2**, turn. (39 sc = 39 sts)

Row 4: Ch 2, \*dc, CH 1, skip the next sc, dc, EDC in the unworked sc 2 rows below, repeat from \* until 3 sts remain, dc, ch 1, skip the next sc, dc in the last stitch, turn. (20 dc, 9 EDC and 10 ch = 39 stitches)

Row 5: Ch 1, sc in each stitch across, **change to Color 1**, turn. (39 sc = 39 sts)

Row 6: Ch 2, \*dc, HP-EDC in the unworked sc 2 rows below, dc, ch, skip the next sc repeat from \* until 3 sts remain, dc, HP-EDC, dc, turn. (20 dc, 10 HP-EDC and 9 ch = 39 sts)

Rows 7 – 30: Repeat Rows 3 – 6.

Rows 31 – 33: Repeat Rows 3 – 5.

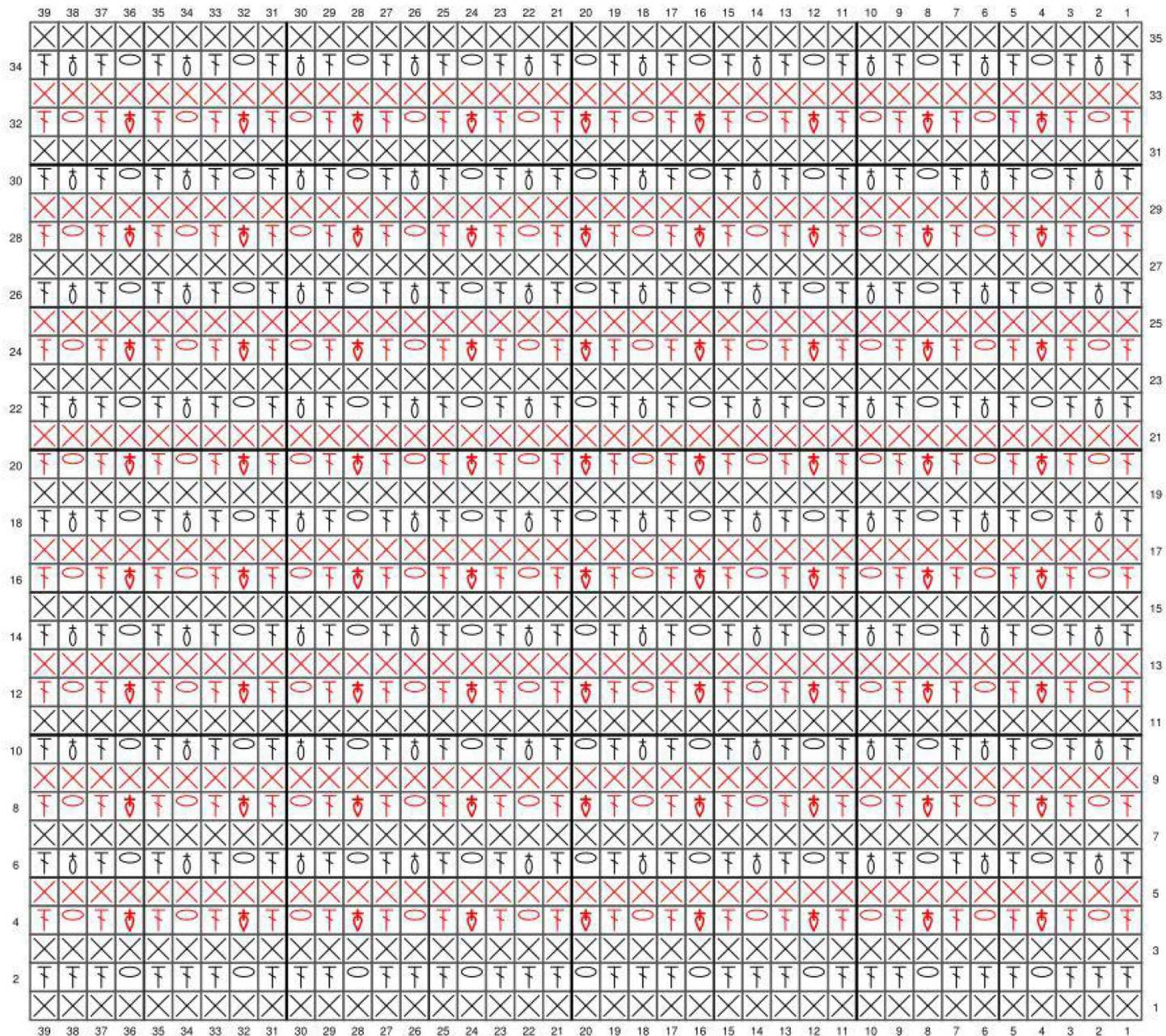
Row 34: **In Color 1**, ch 2, \*dc, HP-EDC unworked sc 2 rows below, dc 2, repeat from \* until 3 sts remain, dc, HP-EDC, dc, turn. (29 dc and 10 HP-EDC = 39 sts)

Row 35: Repeat row 3.

Edging Round: **In Color 2**, ch1, \*sc in each stitch across until 1 stitch remains, sc 3 in the last stitch, (turn to continue working along the side of your square), sc 38 evenly spaced along the edge to the next corner\*\*, (turn to continue working along the foundation chain of your square), sc 3 in the first stitch of the foundation chain, repeat from \* to \*\*, sc 2 in the same stitch as the first sc of the round, join with slip stitch to the first sc.

Cut yarn and fasten off.

Weave in ends and block to 10" x 10" square. Enjoy!



- Color 1 indicated by black, Color 2 indicated by red. Foundation Chain, beginning Chains and SC Edging are omitted from the chart.
- Single crochet
- Single crochet
- Double crochet
- Double crochet
- Chain
- Chain
- Extended double crochet worked in the unworked SC 2 rows below
- Half Puff Extended Double Crochet (HP-EDC) - (YO, insert hook into indicated stitch 2 rows below, draw up a loop making sure to extend the leg of the stitch so it doesn't cinch the rows together) x2, YO, pull through 4 loops, YO, pull through the last 2 l