



Knit Blanket Square



Needles & Hooks

**Designed by
Jill Scott**

Blanket Square Size: 10" x 10"
(25.4 x 25.4 cm)

Yarn: any DK, light worsted weight, or equivalent yarn (i.e. fingering weight held double) that makes gauge.

Recommended Needle: US 6 (4 mm) or size needed to achieve gauge.

Gauge: 20 sts over 4" (10cm)
in stockinette.

Supplies: tapestry needle, stitch markers

Special Abbreviations

This is a list of the special abbreviations. Please refer to [Knitting Abbreviations Master List by the Craft Yarn Council](#)

- k – knit
- k2tog – knit two together
- k3tog – knit three together
- p – purl
- p2tog – purl two together
- p3tog – purl three together
- st (sts) – stitch (stitches)
- yo – yarn over
- x2 (x#) – repeat two (or number) times

Sample was made with Malabrigo Rios.

Pattern Instructions

Cast on 50 stitches using long-tail or preferred cast on method.

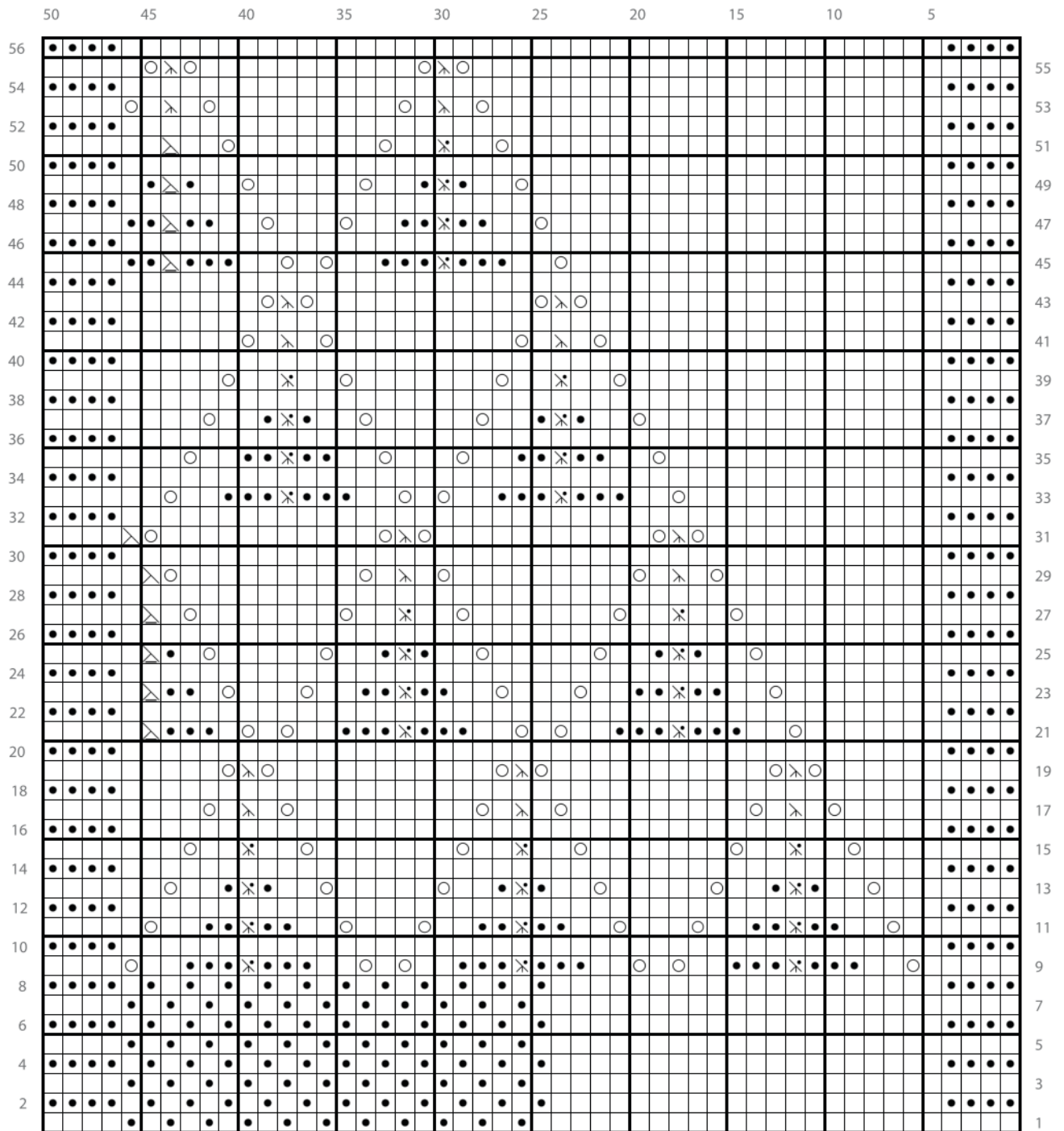
Knit 12 rows (omit last row if you used a long tail cast on).







Work Rows 1 - 56 of Chart on Page 2 or follow Written Chart Instructions on Page 3.

Knit 12 rows.

Bind off all stitches.

Weave in ends and block to 10" x 10" square. Enjoy!



| Right Side | Wrong Side |
|---|---|
|  k |  p |
|  p |  k |
|  yarn over | N/a |
|  P2tog | N/a |
|  P3tog | N/a |
|  K3tog | N/a |
|  K2tog | N/a |

Written Chart Instructions

Row 1: K25, (p1, k1) x10, p1, k4.

Rows 2, 4, 6, 8: K4, (p1, k1) x11, p20, k4.

Row 3: K25, (p1, k1) x11, k3.

Row 5: K25, (p1, k1) x11, k3.

Row 7: K25, (p1, k1) x11, k3.

Row 9: K5, (yo, k2, p3, P3tog, p3, k2, yo, k) x3, k3.

Row 10 and all remaining even rows: K4, p42, k4.

Row 11: K6, (yo, k2, p2, p3tog, p2, k2, yo, k3) x3, k2.

Row 13: K7, (yo, k2, p1, p3tog, p1, k2, yo, k5) x3, k1.

Row 15: K8, (yo, k2, p3tog, k2, yo, k7) x3.

Row 17: K9, (yo, k1, k3tog, k1, yo, k9) x2, yo, k1, k3tog, k1, yo, k8.

Row 19: K10, (yo, k3tog, yo, k11) x2, yo, k3tog, yo, k9.

Row 21: K11, (yo, k2, p3, p3tog, p3, k2, yo, k1) x2, yo, k1, p3, p2tog, k5.

Row 23: K12, (yo, k2, p2, p3tog, p2, k2, yo, k3) x2, yo, k1, p2, p2tog, k5.

Row 25: K13, (yo, k2, p1, p3tog, p1, k2, yo, k5) x2, yo, k1, p1, p2tog, k5.

Row 27: K14, (yo, k2, p3tog, k2, yo, k7) x2, yo, k1, p2tog, k5.

Row 29: K15, (yo, k1, k3tog, k1, yo, k9) x2, yo, k2tog, k5.

Row 31: K16, (yo, k3tog, yo, k11) x2, yo, k2tog, k4.

Row 33: K17, (yo, k2, p3, p3tog, p3, k2, yo, k1) x2, k5.

Row 35: K18, (yo, k2, p2, p3tog, p2, k2, yo, k3) x2, k4.

Row 37: K19, (yo, k2, p1, p3tog, p1, k2, yo, k5) x2, k3.

Row 39: K20, (yo, k2, p3tog, k2, yo, k7) x2, k2.

Row 41: K21, (yo, k1, k3tog, k1, yo, k9) x2, k1.

Row 43: K22, (yo, k3tog, yo, k11) x2.

Row 45: K23, yo, k2, p3, p3tog, p3, k2, yo, k1, yo, k2, p3, p2tog, p2, k4.

Row 47: K24, yo, k2, p2, p3tog, p2, k2, yo, k3, yo, k2, p2, p2tog, p2, k4.

Row 49: K25, yo, k2, p1, p3tog, p1, k2, yo, k5, yo, k2, p1, p2tog, p1, k5.

Row 51: K26, yo, k2, p3tog, k2, yo, k7, yo, k2, p2tog, k6.

Row 53: K27, yo, k1, k3tog, k1, yo, k9, yo, k1, k3tog, k1, yo, k4.

Row 55: K28, yo, k3tog, yo, k11, yo, k3tog, yo, k5.